

# Metalogix® Essentials for Office 365 2.11

## Release Notes

September 2022

These release notes provide information about the Metalogix® Essentials for Office 365 release.

- [New Features](#)
- [Resolved Issues](#)
- [Known Issues](#)
- [Version History](#)
- [System Requirements](#)
- [Product Licensing](#)
- [Third Party Contributions](#)

## New features

### SharePoint Online to SharePoint Online Post-Migration Compare Report

This report highlights differences in the number of objects between source and target after a SharePoint Online to SharePoint Online migration. The report is saved as an Excel file, so it can be shared with other administrators/site owners.

### Copy Google Shared Drive to SharePoint Online

Similar to Copy Google Shared Drive to On Drive for Business, this feature allows you to copy Google Shared Drives to SharePoint Online document libraries.

### Deprecation of SharePoint 2010 Support

SharePoint 2010 is no longer supported.

## Resolved issues

The following is a list of issues addressed in this release.

Description	Work Item #	Customer Issue #
The issue "Hyper Migration	525519	5109893-1

Description	Work Item #	Customer Issue #
Groups to Groups: SharePoint group is not copied if there is a Security group with same name" has been resolved.		
The issue "Hyper Migration Groups to Groups: SharePoint group Developers is copied in lower case" has been resolved.	525521	5109893-1
The issue "SPO to SPO: No content in the Survey list after migration" has been resolved.	526042	5114044-1
The issue "Copy button on ribbon is disabled when file system folder is selected" has been resolved.	527880	CR-42656
The issue "When copying from SharePoint on premises to SharePoint Online, Lookup column value is not preserved" has been resolved.	528166	CR-43076
The issue "When copying Google Drive to OneDrive, files with versions fail to migrate" has been resolved.	528483	01821694

## Known Issues

The following is a list of issues, including those issues attributed to third-party products, known to exist at the time of release.

- Nintex Forms/Workflow app should be installed before a list/library migration.
- Copy Nintex Forms is supported only as part of "Copy Site as Existing Site" because Nintex Forms app should be installed before site migration. Installation of O365 App at "Copy Site as new Site" or "Promote to New Site collection" is not supported as Microsoft does not allow automatic app installation in the tenant during site creation.
- out of place restore from Backups works inside one tenant only.
- Delete action does not remove snapshot from a hyper backup project stored on Amazon Storage with Custom Endpoint.
- Nintex Form migration is not available as part of Hyper Migration.

- Claims Connection goes to loop in some environments and the connection cannot be finished as a result.
- Modern page migration is part of groups to groups migration. For more limitations please refer to backlog Item #422888
- Migrating Chinese to Chinese tenancy:
  - Azure turbo does not work, as Microsoft does not support Azure containers in the Chinese tenant. As a result, Hyper mode migrations and backups work without Azure turbo.
  - Enterprise file systems like Box, Dropbox and Google drives do not work in China.
- Migration of Various Template types is limited

#### **GCC High Tenant migration:**

- Only works using OAuth connections
- Backup does not work
- Old type Script creation is not working, as there is no support for the OAuth connection type

#### **Proxy Setting:**

- Box, Dropbox and Google Drive do not support the use of PAC proxy
- Connection to AWS with PAC is not supported
- Provisioning of personal OneDrive's does not work when using the OAuth connection type.
- Migrating one large file of more than 10 GB results in the tool failing to read all the versions and failing to migrate using Azure.

#### **Google Shared Drives:**

- Individual file/folder share permissions are not preserved upon migration.
- Google Shared Drives membership can be copied to Office 365 only when OAuth is enabled.

#### **Language Migration**

- Same Language Migration (ex: Italian to Italian)
  - During new site collection creation we cannot create a new site in the default language present on the source tenant. The new site will always be created in English if the site is not found during migration.
- SharePoint Online to SharePoint Online Migration
  - Custom doc template setting is not preserved as it does not work with tokens
  - No admin pooling when connected via claims.
  - Master page gallery is not supported.
  - Lookup will work in Synchronous mode

- Migration of various template type limitation is mentioned in a Scenario Guide Article.

#### **High Level Report**

- Claims is not supported for farm connections

#### **SharePoint Online to SharePoint Online**

- Custom document template settings are not preserved as they do not work with tokens
- No admin pooling when connected via claims
- Master page gallery is not supported
- Lookup will work in Synchronous mode
- The following are not supported structures for Migration
- Not Supported:
  - Copy Site Theme/change the look
  - Copy Master Pages Gallery
  - Copy Custom Doc Template
  - Columns and Content Types:
  - Column Settings (Hidden/Required/Optional) are not supported for migration.
  - Additional Column Settings (Description, Validation, Column Formatting, etc.) are not supported for migration.

## **Version History**

New Features and Resolved issues from previous versions are listed below.

### **Version 2.10**

#### **Features**

##### **Licensing**

A new, more limited license level has been introduced which allows users to perform Pre-Migration Analyses only.

##### **Dropbox Connections**

For connections to Dropbox, the creation of long-term access tokens is no longer supported. Long-term tokens created before version 2.10 can still be used, but new ones cannot be created. Refer to the "Dropbox Business - Connection Requirements" topic of the user documentation for details.

##### **Informant Tab Deprecation**

The Informant Tab has been removed from the product.

## Resolved Issues

Description	Work Item #	Customer Issue #
Resolved issue with <i>java.net.MalformedURLException</i> when migrating from SPO to SPO.	522704	5066969-1 5091692-1
Resolved issue with detected duplicated users in UserGroup.xml Synchronous mode when migrating from SPO to SPO.	518453	--
Resolved issue with migration failing if user password contains delimiter when migrating from SPO to SPO.	516682	5015321-1
Resolved issue with correct target URL not being provisioned for GEO Tenant if OAuth is Enabled when migrating from SPO to SPO.	516529	--
Resolved issue with Administrator tab reporting. Information about some multiple OneDrives is not being collected.	517641	--
Resolved issue with CSV to Download content to File System when job finished message displays while job is still running.	517146	5018380-1
Resolved issue with large log unable to be saved to XML.	515618	5020563-1
Resolved issue with CSOM throttling.	518758	5036083-1

## Version 2.9

### Features

#### 2.9.1

- The conversion of a classic Team Site (STS#0) to a modern Team Site (STS#3) is now optional. (It will remain a classic Team Site by default).
- An incremental or delta copy can be run for an existing run from an existing job without the need to create a new project.
- For List/Library and File/Item Folder level copies, validation has been added when the Incremental copy option is selected to ensure the **Last** (time period) field is completed.
- Video content migration support has been added for Asset libraries (template 851) for Azure migrations.

#### 2.9.0

### Copy/Paste Migration in Hyper Mode

Implemented the ability to migrate sites, lists, or items using hyper mode through copy/pasting via the Navigator.

### Hyper Mode Scripting

Updates made which provide additional parameters in hyper mode scripts.

### Filtering for Multiple Values

Enhancements made which allow for filtering on multiple values.

### SharePoint Online to SharePoint Online in Hyper Mode

- Full update/new logic for un-marshalling Export API Manifest Files.
- Added support to preserve INT ID for items and folders when performing Drives Migration via Azure.
- Enhancement for Columns (Location etc.) and Content Type Copy (renamed columns and content types).
- Added support for Teams and Groups Sites as target when doing Drives SharePoint Online to SharePoint Online.
- Added support for German tenant, Updated logic for GCCH tenants.
- Refactoring with Pages: added Post Modern Pages, improved logic for links modification, improved logic
- for Wiki and Webparts copy.

### Resolved Issues

#### 2.9.1

Description	Work Item #	Customer Issue #
Site columns metadata is now migrated successfully from SPO to SPO.	504803	4916633-2
The issue with OneNote files not being copied when performing a File Share to SPO has been resolved by having those files added to folders prior to migration. Essentials will migrate folders containing the OneNotes files; however, these folders cannot be opened in SharePoint	505072	4919345-1
The issue with a subsite list manage metadata column not being linked term set after migration from SPO to SPO has been resolved.	505413 505415	4916633-2

Description	Work Item #	Customer Issue #
The issue with Copy File Share to SharePoint Online actions failing to produce a status report if the root is Drive has been resolved.	515456	5011707-1

## 2.9.0

Description	Work Item #	Customer Issue #
Updated filter logic to resolve 403 error caused when setting up admin accounts without Multi-Factor Authentication.	492406	4833796-1
Resolved issue where Managed Metadata Column data was not migration.	497363	4871577-1
Added support for the preservation of INT ID when copying items via Azure in order to prevent the copying of duplicate items and files.	497723	4875346-1
Resolved auto-mapping issue which caused source content types to not properly copy.	497890	4843744-2
Resolved issue where Essentials was unable to update Modern Page thumbnails after migration. Resolved by updating internal URLs in Web Parts when performing SharePoint Online to SharePoint Online URL migration.	498772	4883089-1
Resolved SharePoint Online to SharePoint Online migration error by removing the filtering when checking sites on target.	499780	4891909-1
Resolved issue where unable to migrate content from OneDrive to OneDrive using the Navigator.	503293	4925245-1

# Version 2.8

## Features

### Nintex Premigration Report

Essentials now provides users with the ability to scan SharePoint 2013, 2016, and 2019 farms and generate a Nintex report file for review before starting a migration.

### Detailed SharePoint Report

Essentials now provides users with the ability to scan SharePoint 2013, 2016, and 2019 farms and generate a detailed report file for review before starting a migration.

### High Level Scan Report

Essentials now provides users with the ability to scan SharePoint Online tenants and generate a High-level scan report file for review before starting a migration.

### OneDrive Provisioning

Essentials now provides users with the ability to provision their SharePoint users with OneDrive accounts.

### SharePoint Online to SharePoint Online Migration Enhancements

- Added support for migration managed metadata and lookup values in Export API with Azure Turbo Jobs
- Added support for Promoted Links List
- Added support for InfoPath Webparts for wiki pages and webpart pages
- Added more templates for promotion of new site collections

### Telemetry Reporting

Implemented the ability to report on user actions using Reactive API.

### Adopting Inclusive Language

Adoption of the established guidelines to identify problematic language used in our products and documentation.

## Resolved Issues

Description	Work Item #	Customer Issue #
Resolved issue where the migration of SharePoint lists with attached files, was opening all attachments as the same file.	455559	4655406-1
Resolved AMER Data Migration Discrepancies .	468454	4778390-1



Description	Work Item #	Customer Issue #
Resolved issue where an error was occurring when backing up SharePoint Online sites.	468475	4763494-1
Resolved issue where migrating an error list with the title "Shared Documents" was not found.	472177	4745344-1
Resolved issue where pre-migration analysis for SPO Modern Team Sites was causing a web part error.	476266	4770000-1
Resolved issue where end user was unable to migrate content from SharePoint 2013 to Office 365.	479306	4811322-1, 4800327-1, 4768589-1, 4789471-1
Resolved issue where permissions were being inherited from the source but not applied on the target.	480060	4788520-1
Resolved issue with the loading of site collections.	480304	4795456-1
Resolved issue associated with metadata when performing a classic site copy from SharePoint Online to SharePoint Online.	481311	4803005-1
Resolved issue with the Modified By column	481354	4848018-1, 4798237-1
Resolved issue with migrating user permissions using command line scripts.	481869	4805584-1
Resolved InfoPath Form SSL errors.	481922	4805983-1
Resolved issue where Essentials was removing the first letter of SharePoint Online Document libraries.	482093	4814611-1
Resolved issue where workflows were not being completed migrated after upgrade.	483098	4805995-1
Resolved issue where InfoPath forms were not usable after migration.	483285	4794073-1
Resolved issue where the Date Time column value were the date was not being preserved correctly	483924	4821487-2, 4821487-1
Resolved issue where Hyper Migration for Google Drive to Microsoft Teams was failing with an error.	484258	4826290-1
Resolved issue where users were receiving an error message when migrating a library that	484679	4823621-2

Description	Work Item #	Customer Issue #
has no versions during incremental copy with 0 days.		
Resolved issue where group owners were not migrating to the target.	484925	4829305-1
Resolved issue where Office 365 Groups to Office 365 Groups migration in hyper migration mode was not copying library versioning settings.	486131	4841006-1
Implemented feature request for the support of calendar view with hyper migration.	486487	4844039-1
Resolved issue with running scheduled tasks for FileShare to SharePoint Online in Hyper mode.	487576	4838806-1
Resolved issue where pages were not migrating	461649	4810540-1
Resolved issue where performing a hyper migration for Japanese community sites was failing in versions 2.6 and 2.7	478952	4787631-1
Resolved issue where errors were occurring when migrating lists.	481592	4806457-1
Resolved issue where user was unable to delete jobs from the backup navigator.	479116	4777525-1
Resolved issue where items were not being copied after hyper migration from SharePoint Online to SharePoint Online.	479823	4794445-1
Resolved issue where files were missing when using Azure.	479574	4782836-1
Resolved issue where SharePoint Online to SharePoint Online list items for Japanese name lists were not copied after running hyper migration.	479754	4794456-1
Resolved issue where not all STS#3 sites were displaying for connected SharePoint Online tenants.	447732	4781616-1
Resolved issue where Layout and contents were not successfully copied for Japanese sites during hyper migration.	488412	4796130-1
Resolved issue where users were unable to migrate Out of the Box Web Parts from SharePoint Online to SharePoint Online lists.	473171	4755648-1
Resolved issue where migrating large libraries in Russian were resulting in errors.	479409	4782052-2

Description	Work Item #	Customer Issue #
Resolved issue with Azure upload jobs.	490937	4847248-1

## Version 2.7

### Features

#### Pre-Migration Report

New pre-migration report for SharePoint 2013 and 2016, which allows users to scan farms and generate a high-level report for review before starting a migration.

#### Profile Manager Redesign

Redesigned the Profile Manager's look and feel, providing users easier and more organized access from a centralized location for migration settings.

#### Additional support for SharePoint Online to SharePoint Online in Hyper Mode

Added support for migration using Export API, Copy workflows and forms, Copy regional settings, themes and templates, Copy checked in/out files.

#### Multi-language Migration Support

Ability to migrate content in various languages. We now support migration from English to other languages and vice versa, migration in non-English to non-English languages (tested Spanish, Italian, Korean, French, Portuguese, etc.)

#### Custom metadata columns in Fileshare migration to SharePoint Online

New addition to Fileshare to SPO migration which allows users to add custom metadata to a csv, which can then be uploaded as part of a migration. The additional column specified for the items will be added as a text column in SPO and the content will be uploaded.

#### Office 365 Groups Backup

Ability to create Office 365 groups backup using hyper mode.

#### Office 365 Groups Auto Provisioning

Ability to automatically provision groups as part of the migration process.

#### Convert 2010 to 2013 workflow style in SPO

Automatic conversion of 2010 workflow style to 2013 both from Navigator and hyper migration path.

#### Migrate to Microsoft Teams channel from CSV

Added support for migration to Microsoft Teams channel by specifying the channel name in the csv file.

#### Validation for CSV for all migration

Ability to validate CSV files for any incorrect values, after the user has uploaded the CSV, to avoid error after starting the migration.

#### Change to AES 256 algorithm for FIPS compliance

Updated the algorithm for encryption to AES 256 bit, due to this, after the upgrade the existing jobs must be re-created, and passwords should be updated for backup projects, and will need to re-enter proxy settings.

### **Create STS#3 for team site (no group) migration**

Created the ability to provision modern templates during migration. As per Microsoft guidelines the functionality does not differ between a classic and modern template. It is also easier & faster to create STS#3 then STS#0 templates.

### **Discovery of various template types**

Automatic discovery of all template types. For limitation in migration please see Template Limitation Scenario Guide.

### **Use of Microsoft Export API(AMR) for tenant migrations**

Added support for Export API.

## **Resolved Issues**

<b>Description</b>	<b>Work Item #</b>	<b>Customer Issue #</b>
Resolved issues with incorrect user mapping for Dropbox in Copy/Paste Mode.	473228	4751209-1
Resolved issue where "created at" was not copying during a Copy/Paste from the Navigator due to API limits.	473154	4751209-2
Resolved issue where User Mapping for SharePoint Online was not working in Copy/Paste Mode.	472895	4753088-1
Resolved issue where Google to Non-English Groups/Teams Migration was not working.	472177	4745344-1
Resolved issue where the cloning permissions option was not setting permissions to the target user via script.	467989	4740695-1
Resolved issue where support for Google to Non-English Groups/Team was not working.	472177	4745344-1
Resolved issue where Classic Copy was resulting in attachments having the same body.	455559	4655406-1
Resolved issue where backup of groups was not working in hyper backup, but required classic backup.	457180	4637592-1
Resolved issue where file share migration analysis fails on a folder with restricted access in Migrator.	457843	4666869-1

Description	Work Item #	Customer Issue #
Resolved issue where user mapping is not implemented for folder core properties during library copy and paste.	467886	4704707-1

## Version 2.6

This version of Metalogix Essentials for Office 365 introduces the following features:

### Features

#### Migration of Google Shared Drives

New feature which allows users to migrate Google Shared Drives to Office 365 Group sites and/or MS Teams.

#### Generating Google Mapping File

New feature which allows users the ability to generate source and target shared drive/user mapping for ease of migration from Google Shared Drives.

#### Modern Site Discovery

Essentials is now able to discover both classic and modern sites while connected to Office 365 Tenants.

#### OAuth Default Configuration

OAuth is now configured as the default for tenant migrations. This setting is controlled from the profile manager.

### Fixed Issues

Description	Work Item
Resolved issue where File Share Migration analysis was failing on folders with restricted access.	457843
Resolved issue where OneNote Migration from FileShare to OneDrive was resulting in an incorrect structure appearing on the target.	458936

## Version 2.5

This version of Metalogix Essentials for Office 365 introduces the following features:

### Features

#### Migrating SPO to SPO in Hyper Mode

Implemented the ability to migrate SharePoint Online sites(Classic Team Sites and Modern Team Sites (not connected to Office 365 Groups) between tenants using Hyper Mode.

#### Automatic registration for OAuth Authentication along with Claims

Changes made to how OAuth authentication is added to the tenant, and added support for Claims connections using OAuth.

### **Support for GCC High tenant**

Implemented the ability to migrate to and from GCC High Tenants.

### **Centralized proxy settings and support for PAC and White-Listing**

Implemented the ability to set up proxy from a central location. New proxy dialog is now available which supports bypassing White Lists, and PAC scripts with and without authentication.

### **Job Status Reports**

Job Status reports, which show information about your jobs, are now available in a user-friendly excel file, which can be sent automatically in email notifications.

### **Nintex support for SP 2019 On-Prem and Nintex app Registration**

Implemented the ability to register Nintex Apps once across site collections.

### **User Mapping Report**

Implemented a new Tenant to Tenant and File Share to Tenant report option, which allows users to create user mapping CSV reports.

### **Documentation Updates**

Changes made to the structure of the user manual, including the current updates made to the tool.

### **Fixed Issues**

Description	Work Item
Resolved modern page migration error from O365 groups to O365 groups.	
Resolved issue where users were unable to see accounts connected to SPO or add more Admin pool accounts to existing projects.	422204
Resolved issue where users were unable to migrate Modern Team Sites from one tenant to another, due to Home.aspx corrupting.	415532
Resolved issue where not all OneDrive users were being loaded from the tenant.	
Resolved issue where temporary files for Hyper Migrations were not getting flushed automatically, resulting in the need to delete them manually.	426494
Resolved issue where multiple OneNote Files, and locations of logs, were out of storage.	
Resolved issue where reports were not generating for large jobs.	412145
Resolved issue where users were being redirected to the home page after receiving an error message.	444942
Resolved issue where Essentials was not using the configured proxy for all Internet Traffic that the tool was generating.	438338

Description	Work Item
Resolved issue where could not copy survey file, when migration between SPO and SPO.	445132
Resolved issue where Migration jobs were running for too long.	
Resolved issue where Essentials version in tool is different from the one displayed on the Control Panel.	442406
Resolved issue where Essential was not Bypassing the Local Addresses when Proxy is configured and used with the tool.	443931
Resolved issue where Workflow setting "Creating a new item will start this workflow" is not preserved after migration.	445292
Resolved Issues that were occurring while migrating Surveys List.	445132
Resolved issue where "The Modified At" Metadata was not migrating correctly for Folders that were not at the root level.	448221
Resolved issue where O365 Groups Default Library titles were not being preserved.	450971
Resolved issue where Migrating from File Share to SharePoint Online user mapping was not working.	451852
Resolved issue where users evaluation Essentials wanted to import files from share drive to share.	451990
Resolved issue where MySites to OneDrive Migration via proxy server was not working.	
Resolved issue where Deleting item(s) from source was not deleting them in folder structure.	439993
Resolved issue where Migration was stopping in the middle with an "unable to delete file" error.	455042
Resolved issue where Migration with mapping of Folders to custom Document Set content type was not working.	452590
Resolved issue where Dropbox to Office 365 Groups copy to existing site collection reports was resulting in an error and not mapping users.	453237
Resolved issue where Task scheduler for migration was not working.	451034
Removed the OneDrive Management Button from the Drives Tab.	
Resolved issue where creating a new profile resulted in broken email notifications table	451942
Resolved issue where user was not able to connect to google in order to open google account in navigator.	455713
Resolved issue where permissions were not working for SharePoint Groups.	456364

## System Requirements

Our desktop tool is a multi-threaded/multi-tasking application. As such, available system memory is the most critical parameter for optimal performance.

### Hardware

Component	Minimum Requirement	Recommended
Processor	Intel Core i7	Intel Core i9, X-Series or higher
Memory	16 GB  <b>NOTE:</b> to increase memory, start Metalogix Essentials for Office 365 - go to Help > Profile Manager > Memory Management.	32 GB
Disk Drives	Dual hybrid disk drives C: OS, Program Files, Data Files	Dual SSD drives C: OS and Program Files D: Data Files
Network Card	100 Mbps	1Gbps

### Operating System Software

- Windows 10 or higher
- Disable anti-virus software or disable scanning of Metalogix Essentials Program, Program Folder, and Data folders.

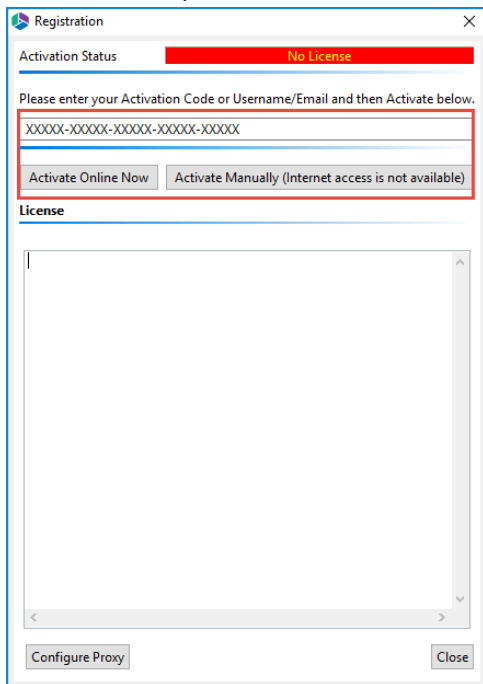
## Product Licensing

After purchasing Metalogix Essentials, you will receive an email with the link to the product download and the activation code to activate the product. If you did not receive such an email please contact us: [www.quest.com/contact](http://www.quest.com/contact).

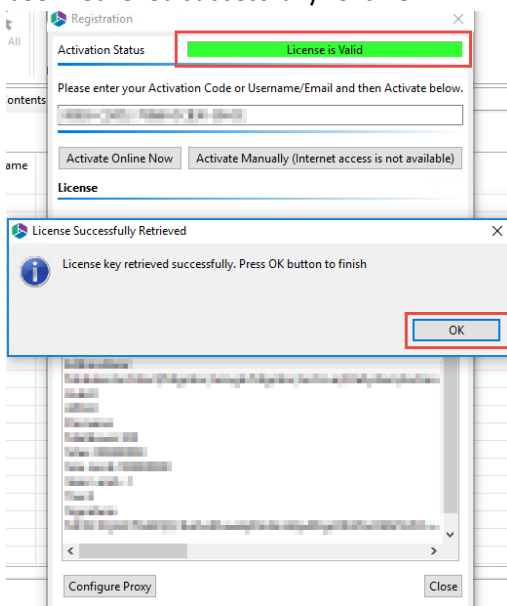
1. Once installation has been completed, upon starting the Essentials application for the first time, you will be presented with a Registration Screen. Enter your activation code in the allowed space, and select your choice of activation method. For **Activate Now** proceed to step 2. Go to the following section for instructions on how to [Activate Manually](#) (used if you do not have



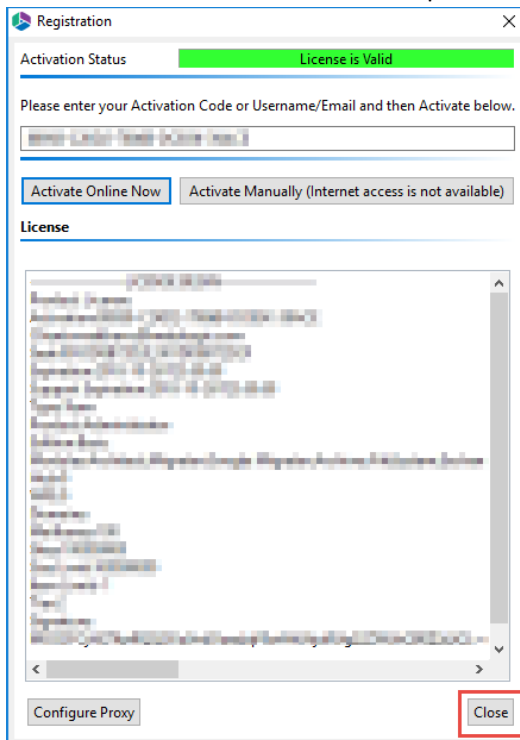
internet access).



2. The license should appear in the License box and the Activation Status bar should turn green and display "License is Valid". You will also receive a message stating that your License key has been retrieved successfully. Click **Ok**.



3. After this click the **Close** button and proceed to the product.

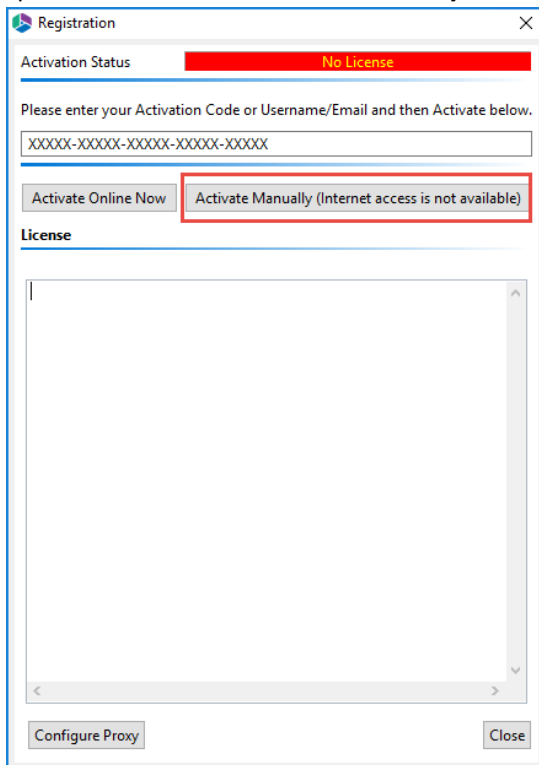


## Activating License Keys Manually

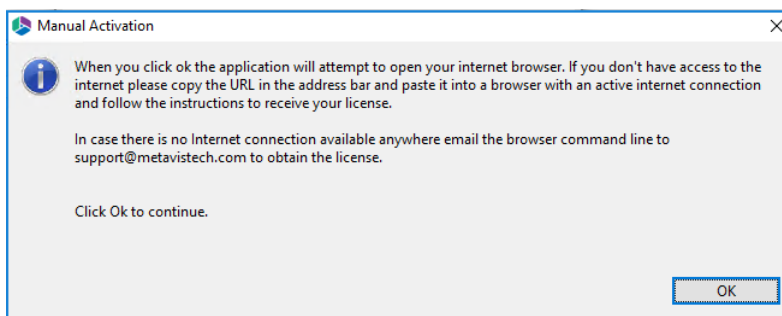
After purchasing Metalogix Essentials, you will receive an email with the link to the product download and the activation code to activate the product.

1. Once installation has been completed, upon starting the Essentials application for the first time, you will be presented with a Registration Screen. Enter your activation code in the allotted

space, and select to **Activate Manually**.

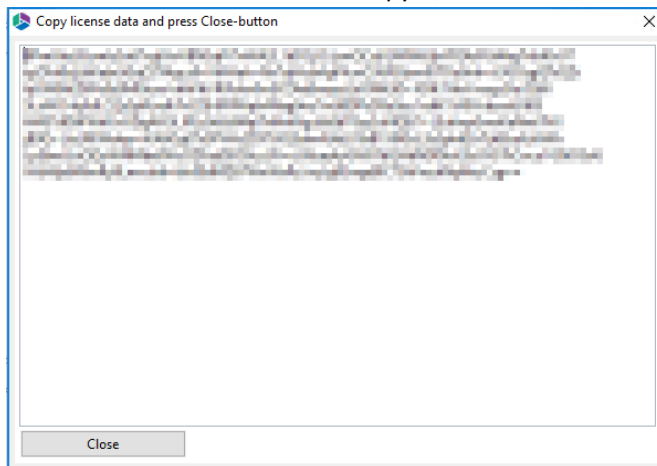


2. You will be presented with a window that details the instructions on how to obtain your license manually in the case that the machine on which Essentials has been installed does not have access to the internet.



3. As is displayed in the above screen shot, upon clicking **Ok**, your internet browser will be opened, if you do not have access to the internet, then simply copy the URL in the address bar and paste it into the browser of a machine with an active internet connection. This will give you access to your license data.

4. Select all the license data and copy it, then click **Close**.



5. Once you have copied the license data, and closed the license data window, you will be redirected to the Offline Activation page. Paste the license data into the area marked Activation Text. Click **Activate**.

Complete the form now to activate your license key.

*Enter activation data*

Activation text



OR

*Upload activation data*

Activation file

6. If activation was successful you will be redirected to the successful activation page. Here you must either copy the Activation Text.



[202-609-9100](tel:202-609-9100)

**Activation Successful.**

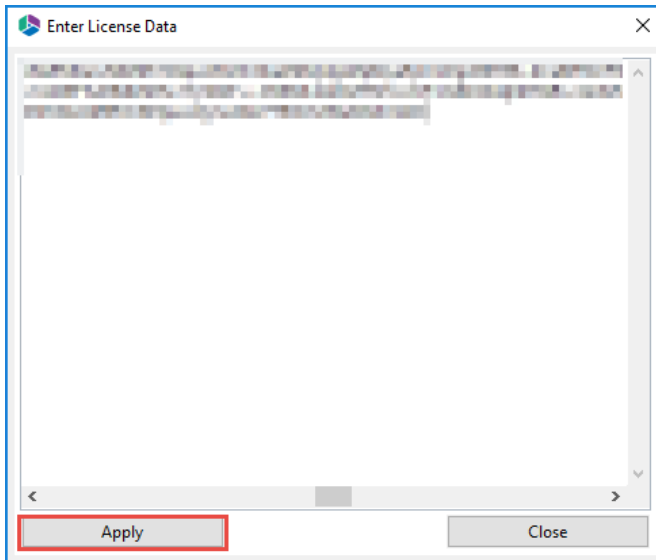
Copy the Activation Response text into the clipboard or download it as a file. You will have to enter this text (or file) in the Offline Activation Wizard in the product setup or management tool in order to validate your license key.

Activation text

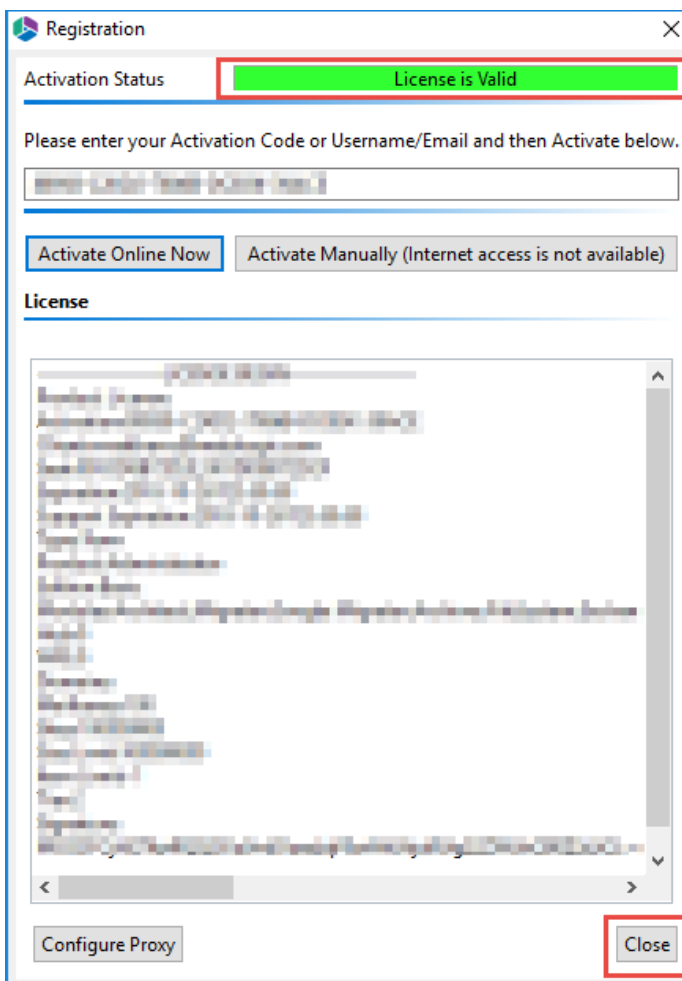


[Download file](#)

- Return to the Essentials Registration Screen. An Enter License Data window will have opened, paste the activation text here, and select **Apply**.



- The license should appear in the License box and the Activation Status bar should turn green and display "License is Valid". Your license has been activated, you may now click **Close** and use the Essentials console.



## Third Party Contributions

This product contains the following third-party components. For full text of third-party license information, see <https://www.quest.com/legal/third-party-licenses.aspx>.

Component	License or Acknowledgment
box-java-sdk-2.20.0.jar	Use of this component is governed by the box-java-sdk © 2015 Box, Inc. All rights reserved. The Apache Software Foundation
google-api-client-1.23.0.jar	Use of this component is governed by the Google Google © 2011 Google Inc. All rights reserved.
Dropbox-core-sdk 3.0.5	Use of this component is governed by the Dropbox Inc. Copyright (c) 2015. <a href="http://www.dropbox.com/">http://www.dropbox.com/</a>

## About

Quest creates software solutions that make the benefits of new technology real in an increasingly complex IT landscape. From database and systems management, to Active Directory and Office 365 management, and cyber security resilience, Quest helps customers solve their next IT challenge now. Around the globe, more than 130,000 companies and 95% of the Fortune 500 count on Quest to deliver proactive management and monitoring for the next enterprise initiative, find the next solution for complex Microsoft challenges and stay ahead of the next threat. Quest Software. Where next meets now. For more information, visit [www.quest.com](http://www.quest.com).

## Copyright

© 2022 Quest Software Inc. ALL RIGHTS RESERVED.

This guide contains proprietary information protected by copyright. The software described in this guide is furnished under a software license or nondisclosure agreement. This software may be used or copied only in accordance with the terms of the applicable agreement. No part of this guide may be reproduced or transmitted in any form or by any means, electronic or mechanical, including photocopying and recording for any purpose other than the purchaser's personal use without the written permission of Quest Software Inc.

The information in this document is provided in connection with Quest Software products. No license, express or implied, by estoppel or otherwise, to any intellectual property right is granted by this document or in connection with the sale of Quest Software products. EXCEPT AS SET FORTH IN THE TERMS AND CONDITIONS AS SPECIFIED IN THE LICENSE AGREEMENT FOR THIS PRODUCT, QUEST SOFTWARE ASSUMES NO LIABILITY WHATSOEVER AND DISCLAIMS ANY EXPRESS, IMPLIED OR STATUTORY WARRANTY RELATING TO ITS PRODUCTS INCLUDING, BUT NOT LIMITED TO, THE IMPLIED WARRANTY OF MERCHANTABILITY, FITNESS FOR A PARTICULAR PURPOSE, OR NON-INFRINGEMENT. IN NO EVENT SHALL QUEST SOFTWARE BE LIABLE FOR ANY DIRECT, INDIRECT, CONSEQUENTIAL, PUNITIVE, SPECIAL OR INCIDENTAL DAMAGES (INCLUDING, WITHOUT LIMITATION, DAMAGES FOR LOSS OF PROFITS, BUSINESS INTERRUPTION OR LOSS OF INFORMATION) ARISING OUT OF THE USE OR INABILITY TO USE THIS DOCUMENT, EVEN IF QUEST SOFTWARE HAS BEEN ADVISED OF THE POSSIBILITY OF SUCH DAMAGES. Quest Software makes no representations or warranties with respect to the accuracy or completeness of the contents of this document and reserves the

right to make changes to specifications and product descriptions at any time without notice. Quest Software does not make any commitment to update the information contained in this document.

If you have any questions regarding your potential use of this material, contact:

Quest Software Inc.  
Attn: LEGAL Dept.  
4 Polaris Way  
Aliso Viejo, CA 92656

Refer to our Web site (<https://www.quest.com>) for regional and international office information.


### Patents


Quest Software is proud of our advanced technology. Patents and pending patents may apply to this product. For the most current information about applicable patents for this product, please visit our website at <https://www.quest.com/legal>.

### Trademarks

Quest, the Quest logo, and Metalogix are trademarks and registered trademarks of Quest Software Inc. and its affiliates. For a complete list of Quest marks, visit <https://www.quest.com/legal/trademark-information.aspx>. All other trademarks and registered trademarks are property of their respective owners.

### Legend

 **CAUTION:** A caution icon indicates potential damage to hardware or loss of data if instructions are not followed.

 **IMPORTANT, NOTE, TIP, MOBILE OR VIDEO:** An information icon indicates supporting information.

Metalogix® Essentials for Office 365  
Updated September 2022  
Version 2.11