

Metalogix® Content Matrix 9.6

Quick Start Guide



© 2022 Quest Software Inc. ALL RIGHTS RESERVED.

This guide contains proprietary information protected by copyright. The software described in this guide is furnished under a software license or nondisclosure agreement. This software may be used or copied only in accordance with the terms of the applicable agreement. No part of this guide may be reproduced or transmitted in any form or by any means, electronic or mechanical, including photocopying and recording for any purpose other than the purchaser's personal use without the written permission of Quest Software Inc.

The information in this document is provided in connection with Quest Software products. No license, express or implied, by estoppel or otherwise, to any intellectual property right is granted by this document or in connection with the sale of Quest Software products. EXCEPT AS SET FORTH IN THE TERMS AND CONDITIONS AS SPECIFIED IN THE LICENSE AGREEMENT FOR THIS PRODUCT, QUEST SOFTWARE ASSUMES NO LIABILITY WHATSOEVER AND DISCLAIMS ANY EXPRESS, IMPLIED OR STATUTORY WARRANTY RELATING TO ITS PRODUCTS INCLUDING, BUT NOT LIMITED TO, THE IMPLIED WARRANTY OF MERCHANTABILITY, FITNESS FOR A PARTICULAR PURPOSE, OR NON-INFRINGEMENT. IN NO EVENT SHALL QUEST SOFTWARE BE LIABLE FOR ANY DIRECT, INDIRECT, CONSEQUENTIAL, PUNITIVE, SPECIAL OR INCIDENTAL DAMAGES (INCLUDING, WITHOUT LIMITATION, DAMAGES FOR LOSS OF PROFITS, BUSINESS INTERRUPTION OR LOSS OF INFORMATION) ARISING OUT OF THE USE OR INABILITY TO USE THIS DOCUMENT, EVEN IF QUEST SOFTWARE HAS BEEN ADVISED OF THE POSSIBILITY OF SUCH DAMAGES. Quest Software makes no representations or warranties with respect to the accuracy or completeness of the contents of this document and reserves the right to make changes to specifications and product descriptions at any time without notice. Quest Software does not make any commitment to update the information contained in this document.

If you have any questions regarding your potential use of this material, contact:

Quest Software Inc.
Attn: LEGAL Dept.
4 Polaris Way
Aliso Viejo, CA 92656

Refer to our Web site (<https://www.quest.com>) for regional and international office information.

Patents

Quest Software is proud of our advanced technology. Patents and pending patents may apply to this product. For the most current information about applicable patents for this product, please visit our website at <https://www.quest.com/legal>.

Trademarks

Quest, the Quest logo, and Metalogix are trademarks and registered trademarks of Quest Software Inc. and its affiliates. For a complete list of Quest marks, visit <https://www.quest.com/legal/trademark-information.aspx>. All other trademarks and registered trademarks are property of their respective owners. Metalogix® Content Matrix

Updated June 2022

Version 9.6

Contents

Introduction	4
Content Matrix Installable Components	5
System Requirements	6
Hardware Requirements	6
Software Requirements	6
Account Requirements	8
URLs that Need to be Unblocked	8
Ports that Need to be Open	9
Supported Source and Target SharePoint Versions	10
Installation	12
Installing the Metalogix Content Matrix Consoles	12
Installing and Configuring the Content Matrix SharePoint WSPs	15
Activating the License Key	16
Online Activation	17
Offline Activation	17
Confirming the Metalogix Extensions Web Service Installation	19
Selecting the SQL Database You Want to Connect to	20
Additional Documentation	21
About Us	22
Technical Support Resources	22
Contacting Quest	23

Introduction

Metalogix Content Matrix Console and its additional component, Metalogix SharePoint Extensions Web Service, allow users to migrate their data into SharePoint.

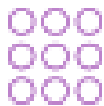
This document is designed to allow you to set up to run the Metalogix Content Matrix Console so you can use the [Evaluation Guide](#) to review and evaluate Metalogix Content Matrix. Prospective client are encouraged to use this guide for basic testing. Please see the [Advanced Installation Guide](#) for more specific details on installation information, including other installation scenarios, connection adapters, configuration, and installation.

Content Matrix Installable Components

Metalogix Content Matrix consists of a combination of Consoles and a SharePoint WSP. Metalogix Content Matrix Consoles are the primary UI applications for migrating content to SharePoint. The consoles include:

Metalogix Content Matrix Console

Metalogix Content Matrix Consoles are the primary UI applications for migrating content to SharePoint. The consoles include:



- Metalogix Content Matrix Console – SharePoint Edition
- Metalogix Content Matrix Console – Public Folder Edition
- Metalogix Content Matrix Console – eRoom Edition

Metalogix Extensions Web Service WSP



The Metalogix Extensions Web Services (MEWS) is a web service wrapper around the SharePoint Server Object Model that provides full fidelity and increased speed for migrations. We recommend installing MEWS on either the source or target server in a SharePoint to SharePoint migration depending on your scenario.

System Requirements

The following tables describe the hardware, software, and access requirements for Metalogix Content Matrix Console. If our requirements are equivalent to, or less restrictive than a SharePoint requirement, it will not be described here.

Hardware Requirements

Component	Minimum Requirement	Recommended
Processor	Intel Core i7	Intel Core i9, X-Series or higher
Memory	16 GB	32 GB
Disk Drives	Dual hybrid disk drives C: OS and Program Files D: Data Files	Dual SSD drives C: OS and Program Files D: Data Files
Network Card	100 Mbps	1Gbps

Software Requirements

Component	Requirement
Operating System	<p>Any of the following Microsoft-supported versions:</p> <ul style="list-style-type: none">• Windows Server 2012 and 2012 R2• Windows Server 2016• Windows Server 2019• Windows 8.1• Windows 10• Windows 11 <p>NOTE: While it is possible to run Content Matrix on an earlier version of the operating system, support cannot be guaranteed.</p>

Component	Requirement
Database	<p>Any of the following Microsoft-supported versions:</p> <ul style="list-style-type: none"> • SQL Server 2012 • SQL Server 2014 • SQL Server 2016 • SQL Server 2019 • A SQL Server hosted in Azure <p>NOTES:</p> <ul style="list-style-type: none"> ▪ While it is possible to run Content Matrix on an earlier version of SQL Server, support cannot be guaranteed. ▪ The use of SQL CE in a production environment is discouraged because of the following limitations: <ul style="list-style-type: none"> • It uses a single .lst file that is less robust and reliable and may be corrupted after the database reaches 4 GB. • Data compression is not supported. • Support for large objects is limited. • Microsoft support for SQL CE has ended. <p>If you still want to use SQL CE, then SQL Server Compact 4.0 must be installed on the machine. You can download a copy from Microsoft.</p>
Windows PowerShell	<p>Metalogix Content Matrix Console has the ability to run migrations using a pre-configured PowerShell console, provided that PowerShell Version 3.0 or later is installed prior to Metalogix Content Matrix.</p>
.NET Framework	<p>Microsoft .NET Framework 4.7.2.</p> <p>Since this .NET requirement applies to the machine on which Metalogix Content Matrix is installed, Metalogix Content Matrix cannot make a local Object Model (OM) connection on a SharePoint 2007 or 2010 environment, because SharePoint 2007 and 2010 require an earlier version of the .NET Framework (v.3.5), which prohibits Metalogix Content Matrix from completing the connection. Because of this, any migration 'jobs' configured to connect to SharePoint 2007 and 2010 environments using a Local OM connection type will cease to work, and these jobs will need to be recreated for use over a different adapter type such as MEWS or DB.</p>

Account Requirements

The below requirements are the standard set of requirements if you are installing Metalogix Content Matrix on a non-SharePoint machine (i.e. installing on a machine that is not running SharePoint, but has access to the source and target environments).

If you are installing the Metalogix Content Matrix client application directly on a target SharePoint Server or Web Front End (WFE), then you would need the same permissions that are required for installing the Metalogix Extensions Web Service (MEWS).

Component	Requirement
Installing User	<p>The user account installing on a SharePoint server, will require Local Administrator permissions on the local machine.</p> <p>NOTE: The user account that is installing on a client machine only needs permissions to install a client application. Metalogix Content Matrix Installer will attempt to elevate permissions as part of the installation process.</p>
Application Pool Accounts	<p>If connecting to a remote, on premises instance of SharePoint the Metalogix Extensions Web Service can be used (for SharePoint 2007 or later). This is a SharePoint solution file that is installed and will use the Application pool user account.</p>
Connecting/Migrating Users	<p>Permissions for connecting to SharePoint and migrating content vary, depending on the type of connection being made and the content being migrated. See User Account Access Requirements in the <i>Metalogix Content Matrix Advanced Installation Guide</i> for details.</p>

URLs that Need to be Unblocked

The following URLs need to be unblocked by your firewall for Content Matrix to connect/perform migrations.

Purpose	URL
Connection to Quest/Metalogix license server	<ul style="list-style-type: none">• https://license.metalogix.com• https://license.metalogix.net
Migrating to SharePoint Online	<ul style="list-style-type: none">• https://login.windows.net• https://login.microsoftonline.com

Purpose	URL
	<p>When migrating using the Import Pipeline, the following URLs must also be unblocked for diagnostic and logging purposes:</p> <ul style="list-style-type: none"> • *blob.core.windows.net • *queue.core.windows.net <p>NOTE: When migrating using the Import Pipeline, the Azure endpoint URL depends on the provided Azure storage connection string. Refer to the following Microsoft article for more information: https://docs.microsoft.com/en-gb/office365/enterprise/URLs-and-ip-address-ranges?redirectSourcePath=%252farticle%252foffice-365-URLs-and-ip-address-ranges-8548a211-3fe7-47cb-abb1-355ea5aa88a2</p>
Migrating Nintex Forms and/or workflows to SharePoint Online	<ul style="list-style-type: none"> • https://discovery.nintexO365.com (Forms and workflows) • https://nintex.onmetalogix.com (workflows only)

Ports that Need to be Open

The following ports need to be open for Content Matrix to connect/perform migrations.

Purpose	Port(s)															
Connection to SQL Server	<p>1433</p> <p>NOTE: By default, Microsoft Windows enables the Windows Firewall, which closes port 1433 to prevent Internet computers from connecting to a default instance of SQL Server on your computer. Connections to the default instance using TCP/IP are not possible unless you reopen port 1433.</p>															
Connection to SharePoint on premises Web applications	<p>The port for each Web application to which you want to connect.</p> <p>These can be found on the Central Administration > Application Management > Manage Web Applications page.</p> <table><tr><th>Name</th><th>URL</th><th>Port</th></tr><tr><td>SharePoint - 80</td><td>http://qax-sp13-a-wfe/</td><td>80</td></tr><tr><td>Host-Named SC</td><td>http://qax-sp13-a-wfe:11111/</td><td>11111</td></tr><tr><td>ControlPoint</td><td>http://qax-sp13-a-wfe:1818/</td><td>1818</td></tr><tr><td>SharePoint Central Administration v4</td><td>http://qax-sp13-a-wfe:1919/</td><td>1919</td></tr></table>	Name	URL	Port	SharePoint - 80	http://qax-sp13-a-wfe/	80	Host-Named SC	http://qax-sp13-a-wfe:11111/	11111	ControlPoint	http://qax-sp13-a-wfe:1818/	1818	SharePoint Central Administration v4	http://qax-sp13-a-wfe:1919/	1919
Name	URL	Port														
SharePoint - 80	http://qax-sp13-a-wfe/	80														
Host-Named SC	http://qax-sp13-a-wfe:11111/	11111														
ControlPoint	http://qax-sp13-a-wfe:1818/	1818														
SharePoint Central Administration v4	http://qax-sp13-a-wfe:1919/	1919														

Supported Source and Target SharePoint Versions

Metalogix Content Matrix Console supports the following versions of SharePoint.

NOTE: With Content Matrix SharePoint Edition, you can migrate into a target version of SharePoint that is *the same or later* than the version of SharePoint on the source. (Migration from a later version of SharePoint to an earlier version is supported for documents and list items only.)

Source Version (SharePoint Edition)*	Target Version (All Editions)				
	SharePoint 2013 (Foundation and Server)	SharePoint 2016	SharePoint 2019	SharePoint Server Subscription Edition	Microsoft Office 365 (SharePoint Online)
SharePoint 2007 (WSS and MOSS)	✓	✓	✓		✓
SharePoint 2010 (Foundation and Server)	✓	✓	✓		✓
SharePoint 2013 (Foundation and Server)	✓	✓	✓	✓	✓
SharePoint 2016		✓	✓	✓	✓
SharePoint 2019			✓	✓	✓
SharePoint Server Subscription Edition				✓	✓

* While it may be possible to migrate from earlier versions of SharePoint (e.g., SharePoint 2003), some long out-of-date functionality may present special challenges when migrating to a supported target. However, Quest Professional Services can provide assistance.

If you want to migrate from a SharePoint Online source to a SharePoint Online target:

Quest offers [Metalogix Essentials for Office 365](#) and [On Demand Migration](#), tools that specialize in Office 365 and SharePoint Online migrations.

Installation

This section describes how to install the Metalogix Content Matrix Console client application(s) and the Extensions Web Service.

Installing the Metalogix Content Matrix Consoles

This section describes the installation steps for the Metalogix Content Matrix Consoles.

NOTE: Consoles for all editions of Content Matrix will automatically be installed. However, you will only be able to use the Consoles that are covered by your license.

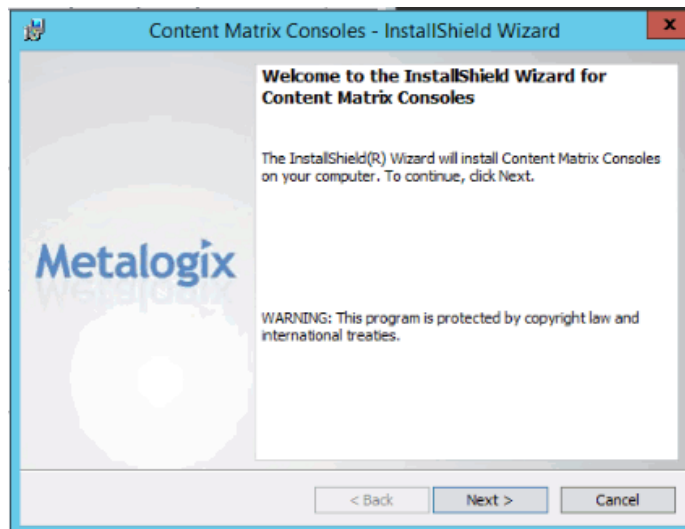
Metalogix Content Matrix Consoles can be installed on any computer that meets the minimum hardware and software requirements for each component that is installed, provided that the computer also has access to the source and target environments (for connection purposes). For an on premises installation, the machine must have access to the SharePoint environments but does not require that SharePoint is installed on it directly, and it does not have to be a WFE.

Please see the *Metalogix Content Matrix Advanced Installation Guide* for more details on possible installation scenarios, configurations, SharePoint connection adapters, and additional information on other Metalogix Content Matrix Console components.

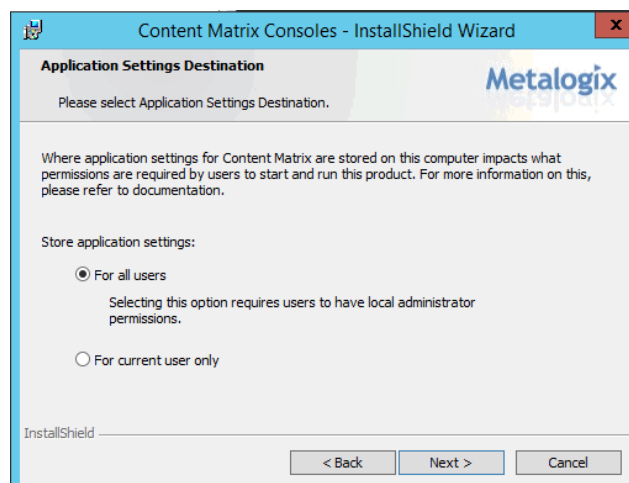
To install the Metalogix Content Matrix Consoles:

1. Copy the **Metalogix Content Matrix Consoles.exe** file to the machine on which you want to install.
2. Close all open applications, including your browser.
3. Double-click **Metalogix Content Matrix Consoles.exe** to start the installation process.

NOTE: Because this installer requires an elevated set of permissions to run, if you do not have the required permissions a message will open informing you that elevated permissions are required. To run the installer with these elevated permissions, select the installer file, right-click and select the **Run as administrator** option.



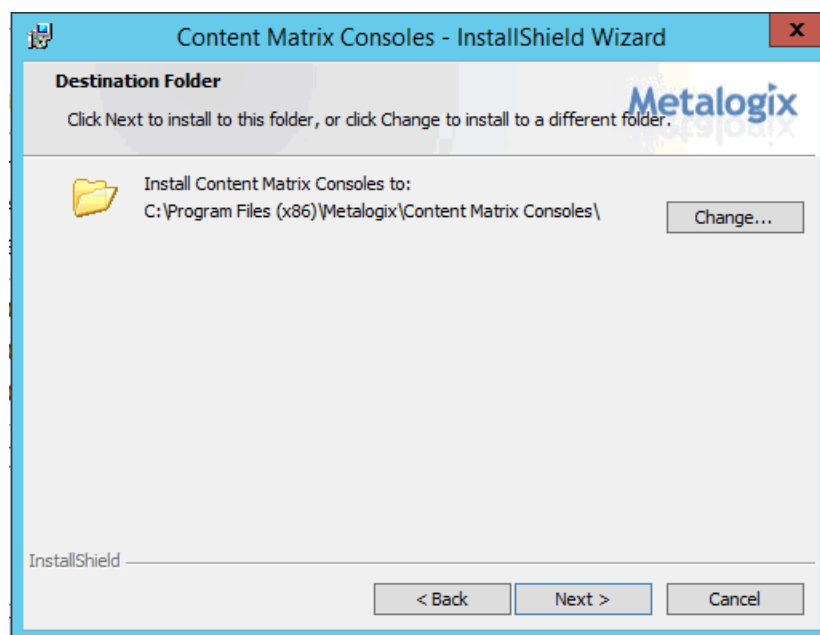
4. Click **[Next]**.
5. Read and accept the License Agreement terms then click **[Next]**.
6. Use the information in the following table to determine the appropriate **Application Settings Destination** option to select.



If you want to ...	Select ...
require all users of the machine to be a local administrator in order to run Content Matrix Console	For All Users. NOTE: If you select this option: <ul style="list-style-type: none"> program data will be stored in C:\ProgramData\Metalogix AND <ul style="list-style-type: none"> only the first user who launches Content Matrix for the first time will be required to enter a license key.
allow all users of the machine to run Content Matrix Console	For current user only.

If you want to ...	Select ...
without being a local administrator	<p>NOTE: If you select this option, when each user launches Content Matrix for the first time:</p> <ul style="list-style-type: none"> program data will be stored in C: \Users\<username>\AppData\Roaming\Metalogix\Co mmon* <p>AND</p> <ul style="list-style-type: none"> each user be required to enter a license key. <p>* If you are upgrading from a version earlier than 9.3 and select this option, program data will automatically be copied from C:\ProgramData\Metalogix to the new file location.</p>

7. Click **[Next]**.

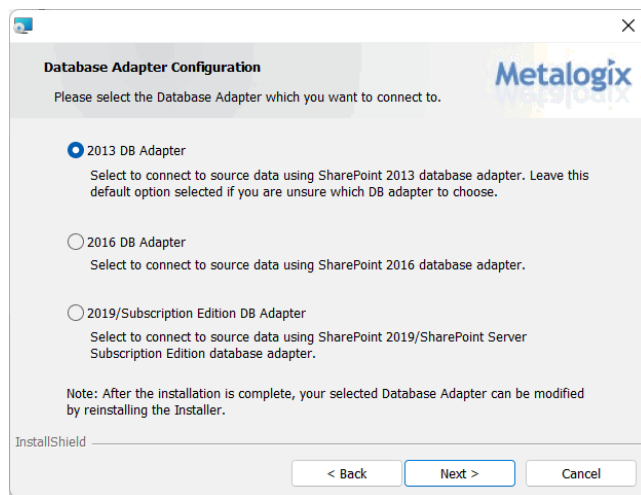


By default the installation Wizard will install all of the selected Metalogix Content Matrix client applications under C:\Program Files (x86)\Metalogix.

You can, however, click **[Change]** and select a different directory.

8. Click **[Next]**.

NOTE: If you have chosen to install Content Matrix SharePoint Edition on a machine that does not also have SharePoint installed, you will be prompted to select a **Database Adapter Configuration** for SharePoint 2013, 2016, or 2019/Subscription Edition. (Note that more than one adapter cannot be installed on the same machine at the same time. If you need to switch from one to the other at a later time, uninstall then re-install the SharePoint Edition using the **Modify** operation.)



9. Click **[Install]**.

The installation process will run, and Editions of Metalogix Content Matrix Console will be installed.

10. Click **Quit** to exit the Installation Wizard.

Installing and Configuring the Content Matrix SharePoint WSPs

This section will walk you through the process of installing the server components (Metalogix Content Matrix SharePoint WSPs) on a target on premises SharePoint farm.

When installing the Metalogix Content Matrix WSPs you should note that an IIS Reset will need to be performed when the solution (WSP) file is deployed through the SharePoint farm. This is a requirement of SharePoint, and not of Quest. In most cases this IIS Reset is automatically done as part of the solution deployment. For more general information on this issue, please see the following MicrosoftTechNet article: [http://technet.microsoft.com/en-ca/library/cc2v=office.14\).aspx#DeployFarmSolutions](http://technet.microsoft.com/en-ca/library/cc2v=office.14).aspx#DeployFarmSolutions).

There are a number of methods that can be used to try and mitigate any downtime when deploying a SharePoint farm solution. One of these methods is to schedule the solution deployment for a time period that will have low impact to the environment's users.

Special Note About Metalogix License Check

Prior to version 8.8, it was a licensing requirement that you install Metalogix Content Matrix Organizer or License Check to support writing content to an on premises SharePoint farm. As of version 9.0, the Organizer option is no longer available, and you will be required to install License Check *only* if you have a Content Under Management (CUM)-type license (beginning with the digits 823) that was issued prior to version 8.8. The License Check installer (**Metalogix License Check.exe**) is available in the installation zip file.

Activating the License Key

You will be prompted to input an Activation License Key when launching the Content Matrix Console:

- for the first time after it has been installed if an existing license is not detected

OR

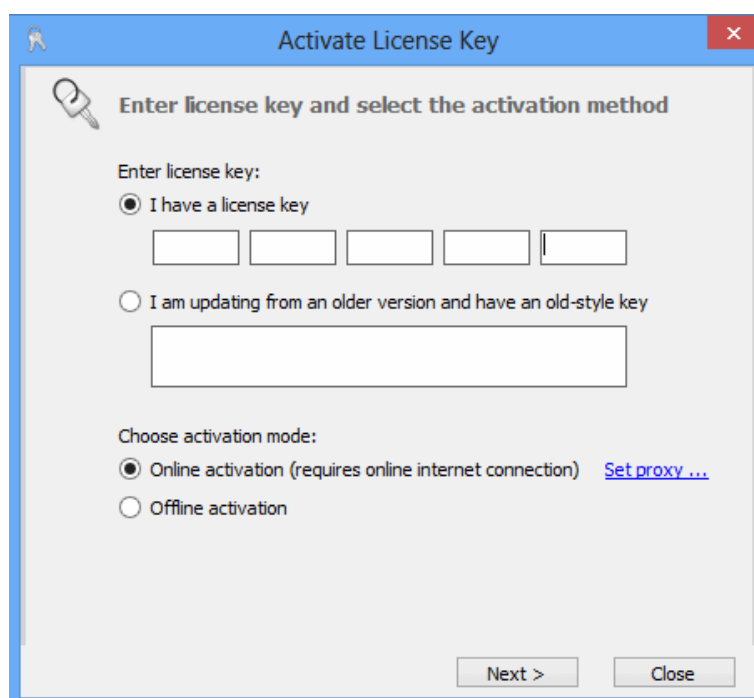
- after your license has expired.

NOTE: If users are not required to be local administrators on the machine where Content Matrix is installed, every user who launches a Console needs to enter a license key. If users are required to be a local administrator, only the first user who launches a Console needs to enter a license key.

IMPORTANT: During installation, all Editions of the Console (SharePoint, eRoom, and Public Folder) are installed. However, the license will only be activated for Editions that are covered by it. If an Edition is not covered by the license, the message *Invalid license: License key is not valid for the given product.* will display in the Activate License Key dialog.

To enter a license key:

1. In the **Activate License Key** dialog, select **I have a license key**, and enter the license key provided by Quest (the key can be copied and pasted into the provided space).



NOTE: If you are updating from a Metalogix Content Matrix installation **older than version 6**, select the **I am updating from an older version and have an old-style key** option, and enter the key in the provided space (or paste into the first field from your clipboard).

2. Select the appropriate activation method.

NOTE: Most systems can use the Online activation method **as long as** the system has internet access. If you are unable to use the online activation method due to security settings or lack of internet access, the Offline activation option can be used.

Online Activation

NOTE: In order to activate your license, the following URL must be unblocked by your firewall:
<https://license.metalogix.com>

1. After entering the license key, select **Online activation**.
2. Click **[Next]**.

Metalogix Content Matrix will contact the licensing server and attempt to authenticate the license key, after which, on successful activation, a 'Congratulations!' message will be returned, and the license key will be active and in use.

3. Click **[Finish]** to complete the process.

Offline Activation

NOTE: The offline activation option is generally used in cases where you cannot use the online activation due to security settings or lack of internet access. This option will still require some internet access, but allows for the authentication to be done from another machine that is not as restricted by security or has a connection to the internet.

1. Select **Offline activation**.
2. Click **[Next]**.

A **Generate Activation Request** dialog displays with a different key. This key can be copied from the window, or the **Save to file** option can be used to save the key into a text file (in case it needs to be copied to another machine).

3. Copy the **Activation URL** (listed under the Activation Request) to a web browser that has internet access.

Alternately if the system the Metalogix Content Matrix Console is on does have internet access through a Web browser, click **Go** to automatically open a web browser to this URL.

4. On a machine that has internet access, use the Activation URL to navigate to the Offline Activation page.
5. Either:

- Enter the key into the **Activation data** text box.
- OR
- If the key was saved to a file, select **Browse** and navigate to the file.
6. Click **[Activate]**.
Upon successful activation, a new key displays in the text box.
 7. Do one of the following:
 - To save the key as a DAT file, click **[Download file]**.
- OR
- To copy the key to the clipboard (if the license will be activated on the same machine), click **[Copy text]**.
8. Click **[OK]** to continue.
 9. Return to the Activate License dialog.
 10. If the Generate Activation Request window is still active, click **[Next]**. to the **Enter your Activation Response** window.
 11. Use one of the following options:
 - If you copied the key to the clipboard on the same machine, paste it into the window.
 - If you saved the key to a DAT file, navigate to, and select the DAT file.
 12. Click **[Next]**. The license key will be active and in use.
 13. Click **[Finish]** to complete the process.

Confirming the Metalogix Extensions Web Service Installation

While there are no settings that need to be configured for the Metalogix Extensions Web Service, there is a way to confirm that it is installed correctly and is working. Details can be found in the *Metalogix Content Matrix Advanced Installation Guide*.

Selecting the SQL Database You Want to Connect to

The first time you launch the Content Matrix Console you will be prompted to select the SQL database that you want to connect to. For evaluation purposes only, you can select Connect to New Job List (SQL Server Compact 4.0* Required), but SQL CE 4.0 must be installed on the machine. You can download it from [Microsoft](#), install it, then restart the Console. For a production environment, it is recommended that you always use a full SQL database. Refer to the edition-specific documentation for details on connecting to a full SQL database.

Additional Documentation

Metalogix Content Matrix documentation ships with the application, but is also available online at <https://support.quest.com/metalogix-content-matrix/technical-documents>.

Additional documentation is described in the *Metalogix Content Matrix Advanced Installation Guide*.

About Us

Quest creates software solutions that make the benefits of new technology real in an increasingly complex IT landscape. From database and systems management, to Active Directory and Office 365 management, and cyber security resilience, Quest helps customers solve their next IT challenge now. Around the globe, more than 130,000 companies and 95% of the Fortune 500 count on Quest to deliver proactive management and monitoring for the next enterprise initiative, find the next solution for complex Microsoft challenges and stay ahead of the next threat. Quest Software. Where next meets now. For more information, visit www.quest.com.

Technical Support Resources

Technical support is available to Quest customers with a valid maintenance contract and customers who have trial versions. You can access the Quest Support Portal at <https://support.quest.com>

The Support Portal provides self-help tools you can use to solve problems quickly and independently, 24 hours a day, 365 days a year. The Support Portal enables you to:

- Submit and manage a Service Request
- View Knowledge Base articles
- Sign up for product notifications
- Download software and technical documentation
- View how-to-videos
- Engage in community discussions
- Chat with support engineers online
- View services to assist you with your product

Contacting Quest

For sales or other inquiries, visit www.quest.com/contact.