

Metalogix® Replicator 7.4

September 2023

Monitoring Replication

This article describes the different ways administrators can monitor replication in order to ensure the health of Replicator.

[Connect](#)

[Event Logging](#)

Connect

Metalogix Connect for Replicator gives SharePoint and Replicator administrators tools they can use to monitor and visualize their SharePoint environment. Using these tools, administrators can:

- Visualize their SharePoint environment.
- Compare the structure and content of SharePoint web applications, site collections, web sites, and lists.
- Cut, copy, and paste list items to reorganize structure within a web application.
- Generate detailed reports about their SharePoint and replication environments.
- Monitor and track replication activity.
- Receive alerts based on changes in their replication environment.
- Manage and manipulate replication servers using links to Central Administration.
- Monitor replication performance.

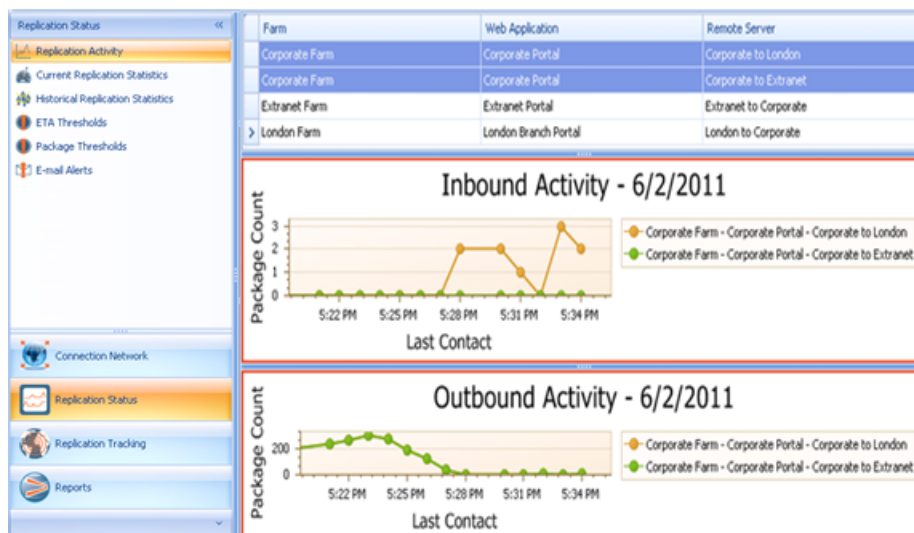
Monitoring Replicator Tools

The tools for monitoring replication are listed under Replication Status in the Connect navigation pane. Using these tools you can:

- View the current replication status and statistics for the web applications in your Replication Network.
- View historical replication statistics across all web applications in your Replication Network.
- Set ETA and Package thresholds to monitor the health of your Replication Network and receive notifications.

Viewing Current Replication Activity

The Replication Activity page graphs the recent number of packages that were sent and received over each Replication Connection. The number of points you see in the graph is based on your data refresh schedule. If you want to see more frequent changes in the graph, then change your data refresh schedule.



The purpose of this page is to provide you with the ability to view package processing activity over a period of time.

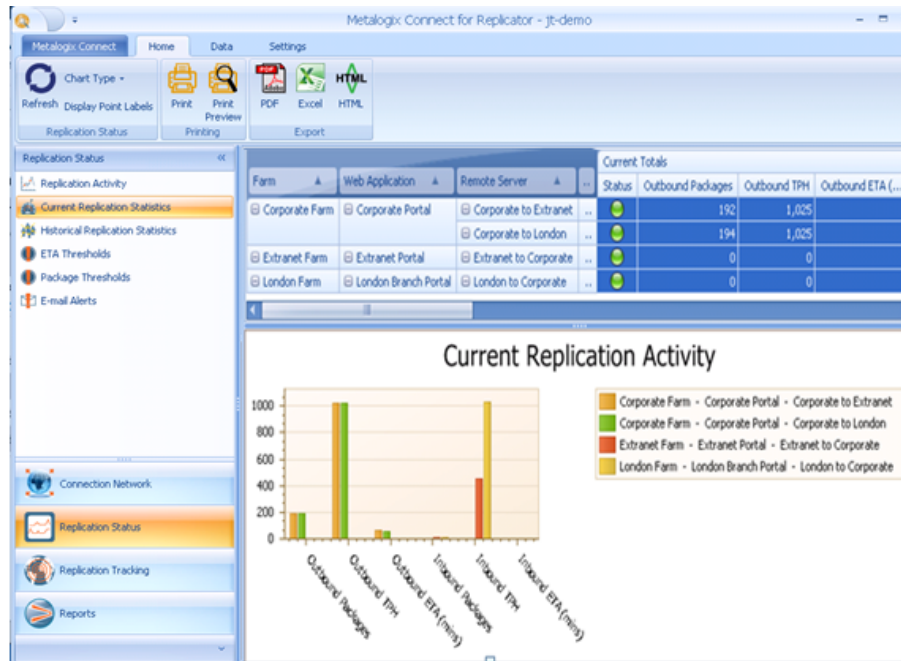
Things to look for on this page would include significant spikes in the package counts, as they may be unnecessary.

Viewing Current Replication Statistics

This page is similar to the Replicator Status page. The current replication activity page presents summary statistics for your Replication Network. You can view these statistics with the use of the Current Totals, or the summary of the totals in their chart format. These statistics summarize the Replication Events and Packages that are currently being replicated.

If you have configured ETA or Package thresholds and any of the current statistics exceeds the thresholds, then those values will be marked in the table. Orange values exceed warning

thresholds and red values exceed critical thresholds.



The purpose of this page is to provide a summary of package processing for each connection.

Things to look for on this page include:

- Unexpected increase in package count
- Longer than expected processing times
- Whether thresholds have been exceeded

Viewing Historical Replication Statistics

The historical replication statistics page presents summary statistics for your Replication Network.

You can view these statistics using the numeric totals and also summarized in a chart.

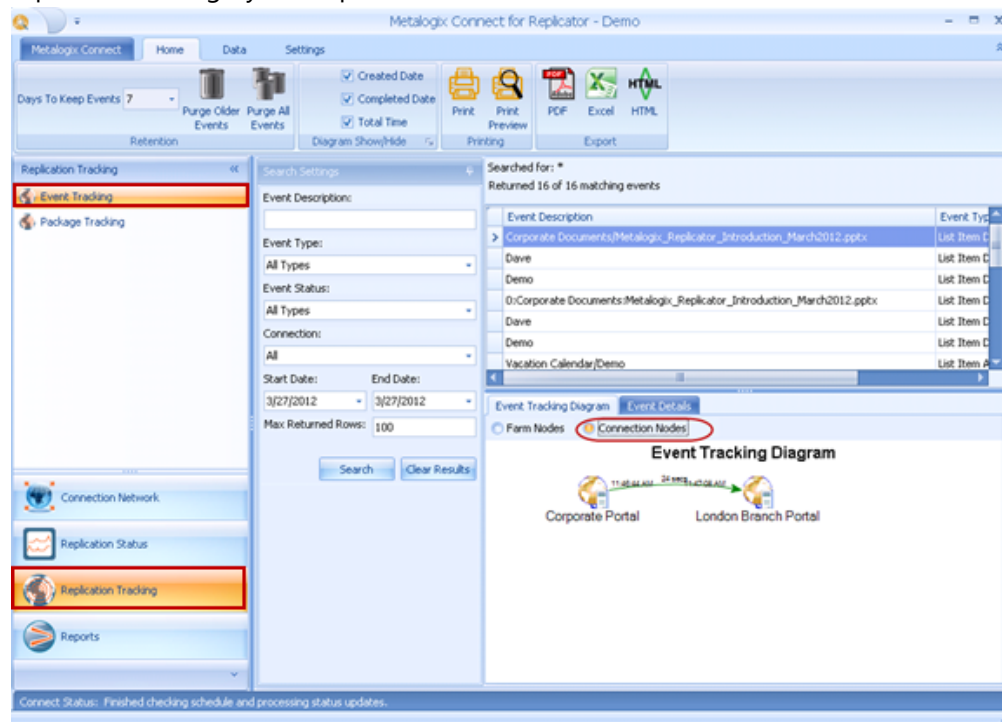


The purpose of this page is to provide a summary total of package processing.

Replication Tracking

Event Tracking

Metalogix Replicator, Enterprise Edition customers can use Connect to track events as they are replicated through your Replication Network.



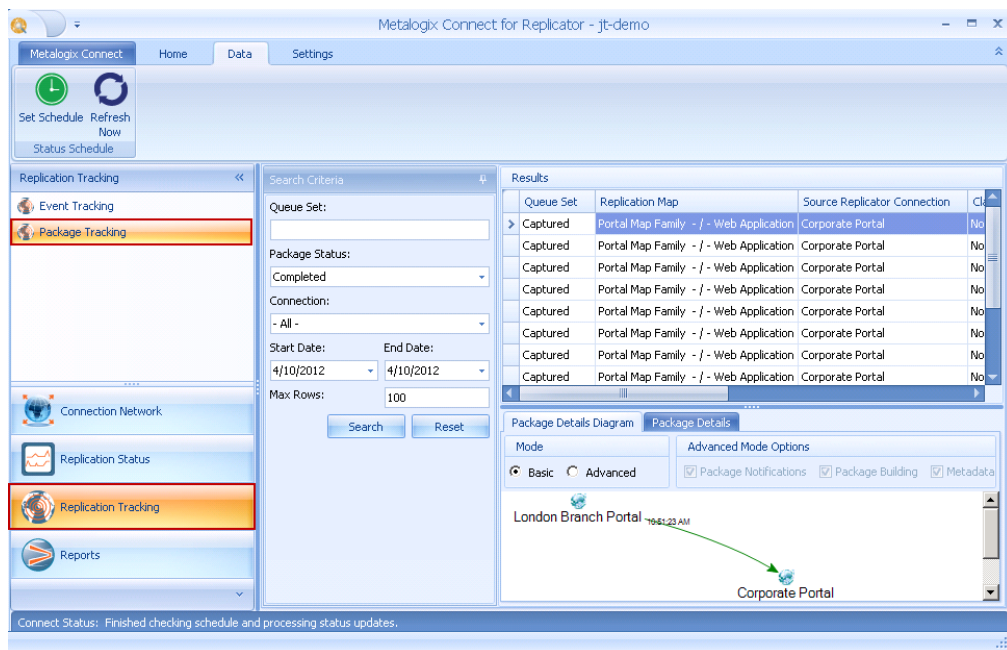
The purpose of this page is to track processing by individual events.

Things to look for include:

- Whether events have arrived on target
- The time it takes to replicate events to the target

Package Tracking

Metalogix Replicator, Enterprise Edition customers can use Connect to track packages as they are replicated through your Replication Network. This function is most useful when replication is set up in Adaptive mode.



The purpose of this page is to track the processing of packages over Replication networks.

Things to look for include:

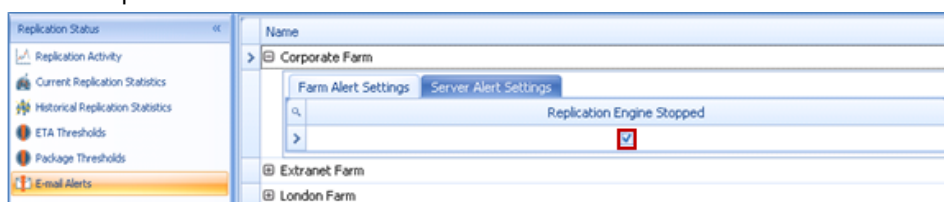
- Whether the package has arrived at all targets
- A breakdown of package notifications
- The amount of time it takes to replicate

Alerts in Connect

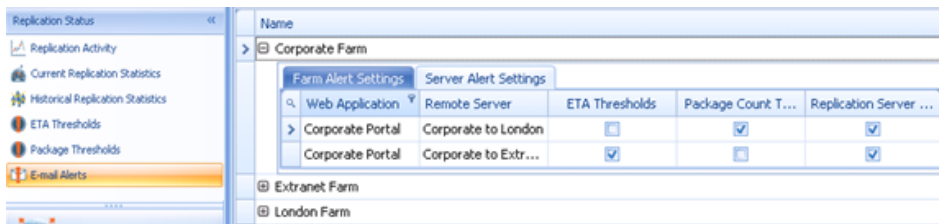
Connect sends e-mail alerts when it detects potential problems in your Replication Network. **The Connect application must be running for alerts to be sent.**

To enable e-mail alerts:

1. In Connect, under the **Home** tab, click **Replication Status**.
2. From the Replication Status menu, select **E-mail Alerts**.
3. If you have not configured an e-mail server, then you will be asked to configure one. You cannot configure e-mail alerts until you have configured an e-mail server.
4. Expand the farms you want to configure alerts for. Under the **Farm Alert Settings** tab, select **Replication Engine Stopped** if you want to be notified when Connect cannot access Replicator on the farm.



- Under the **Server Alert Settings** tab, select the alerts you want to receive for each Replication Connection. ETA and package count threshold alerts will only be sent if you have also configured those thresholds. See the ETA Threshold and Package Threshold sections for more information.



As you enter select alerts, they are automatically saved.

Event Logging

Replicator logs events within Windows Event Viewer, both under the Metalogix Replicator Log, as well as the Windows Application Log. It is often convenient to compare time stamps of the events found in the Metalogix Replicator Log and the Windows Application Log when troubleshooting errors. You can also use Microsoft's System Center Operations Manager (SCOM) for alerts for example by setting up a subscription in SCOM for your Replicator log and your Windows Application Log, you can receive alerts whenever an error is detected. This way you are kept up to date without having to monitor the event logs manually.

Metalogix Replicator Log

The events logged under Metalogix Replicator Log are those that affect the Replicator system directly. These include errors, warnings and general information messages.

An example of a warning message includes: conflict detected

An example of an information message includes: service started

Windows Application Log

Replicator also logs events within Windows Application Log. The events logged here are of a broader nature, and generally those that affect the Windows system as a whole, not just Replicator alone. These messages will include information messages about the starting of the Replicator system, and error messages that affect or are affected by the entire Windows system. The Windows Application Log can also be used by Replicator administrators to provide detailed information about parallel running programs, such as SharePoint and SQL server. This allows administrators to determine whether an issue lies within Replicator or if it is caused by a parallel running program.

PowerShell

You can use PowerShell scripts to check the status of your services. You can also set a task on your server to run the script automatically every hour, to ensure that your services are always running. Use the following script to start the Replicator services if they are not running:

```
$strServiceName = "Metalogix Replicator Transport Service WSS40"
$objService = Get-Service -Name $strServiceName
```

```

if ($objService.Status -ne "Running"){
    Start-Service $strServiceName
}

$strServiceName = "Metalogix Replicator Service WSS40"
$objService = Get-Service -Name $strServiceName
if ($objService.Status -ne "Running"){
    Start-Service $strServiceName
}

```

Web Services

In the event that you do not wish to monitor the replication of your environment using Connect, or the Monitoring Replicator page within Central Administration, you can write your own program, using web services, which will retrieve your replication information for you. These steps illustrate the information that is available using the Replicator web services:

1. In a web browser window, located on the Central Administration server, open the following link:
http://CENTRALADMIN:PORT/_layouts/Syntergy/Replicator/ReplicatorServerInfo.aspx?op=GetReplicationStats be sure to replace CENTRALADMIN with your machine name, and PORT with your port number

2. Click **Invoke**. This will retrieve the data for you.