

Metalogix<sup>®</sup> Archive Manager for Files 8.5

## **IIS Installation Guide**



## © 2022 Quest Software Inc. ALL RIGHTS RESERVED.

This guide contains proprietary information protected by copyright. The software described in this guide is furnished under a software license or nondisclosure agreement. This software may be used or copied only in accordance with the terms of the applicable agreement. No part of this guide may be reproduced or transmitted in any form or by any means, electronic or mechanical, including photocopying and recording for any purpose other than the purchaser's personal use without the written permission of Quest Software Inc.

The information in this document is provided in connection with Quest Software products. No license, express or implied, by estoppel or otherwise, to any intellectual property right is granted by this document or in connection with the sale of Quest Software products. EXCEPT AS SET FORTH IN THE TERMS AND CONDITIONS AS SPECIFIED IN THE LICENSE AGREEMENT FOR THIS PRODUCT, QUEST SOFTWARE ASSUMES NO LIABILITY WHATSOEVER AND DISCLAIMS ANY EXPRESS, IMPLIED OR STATUTORY WARRANTY RELATING TO ITS PRODUCTS INCLUDING, BUT NOT LIMITED TO, THE IMPLIED WARRANTY OF MERCHANTABILITY, FITNESS FOR A PARTICULAR PURPOSE, OR NON-INFRINGEMENT. IN NO EVENT SHALL QUEST SOFTWARE BE LIABLE FOR ANY DIRECT, INDIRECT, CONSEQUENTIAL, PUNITIVE, SPECIAL OR INCIDENTAL DAMAGES (INCLUDING, WITHOUT LIMITATION, DAMAGES FOR LOSS OF PROFITS, BUSINESS INTERRUPTION OR LOSS OF INFORMATION) ARISING OUT OF THE USE OR INABILITY TO USE THIS DOCUMENT, EVEN IF QUEST SOFTWARE HAS BEEN ADVISED OF THE POSSIBILITY OF SUCH DAMAGES. Quest Software makes no representations or warranties with respect to the accuracy or completeness of the contents of this document and reserves the right to make changes to specifications and product descriptions at any time without notice. Quest Software does not make any commitment to update the information contained in this document.

If you have any questions regarding your potential use of this material, contact:

Quest Software Inc.  
Attn: LEGAL Dept.  
4 Polaris Way  
Aliso Viejo, CA 92656

Refer to our Web site (<https://www.quest.com>) for regional and international office information.



### Patents

Quest Software is proud of our advanced technology. Patents and pending patents may apply to this product. For the most current information about applicable patents for this product, please visit our website at <https://www.quest.com/legal>.

### Trademarks

Quest, the Quest logo, and Metalogix are trademarks and registered trademarks of Quest Software Inc. and its affiliates. For a complete list of Quest marks, visit <https://www.quest.com/legal/trademark-information.aspx>. All other trademarks and registered trademarks are property of their respective owners.

### Legend

-  **CAUTION:** A caution icon indicates potential damage to hardware or loss of data if instructions are not followed.
-  **IMPORTANT, NOTE, TIP, MOBILE OR VIDEO:** An information icon indicates supporting information.

Metalogix® Archive Manager for Files

Updated January 2022

Version 8.5

# Contents

<b>Installation of IIS for Archive Manager for Files .....</b>	<b>4</b>
Installation of IIS on MS Windows Server .....	4
Installation of .NET Framework .....	8
<b>About Us .....</b>	<b>10</b>
Contacting Quest .....	10
Technical Support Resources .....	10

# Installation of IIS for Archive Manager for Files

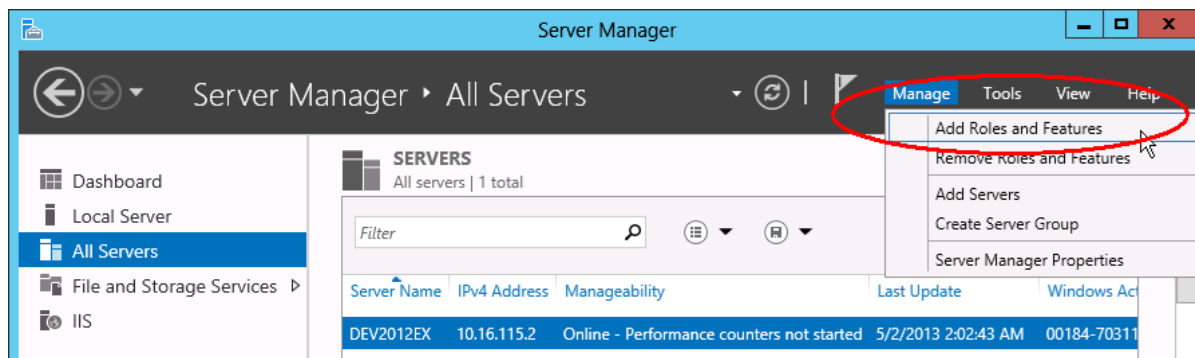
If HTML shortcuts, VNX Archiving, ArchiveWeb or MS Search features will be used with Archive Manager for Files, IIS with the Active Server Pages is required. The following sections describe step-by-step installation of IIS and additional prerequisites for these operating systems:

- MS Windows Server 2012
- MS Windows Server 2012 R2
- MS Windows Server 2016
- MS Windows Server 2019

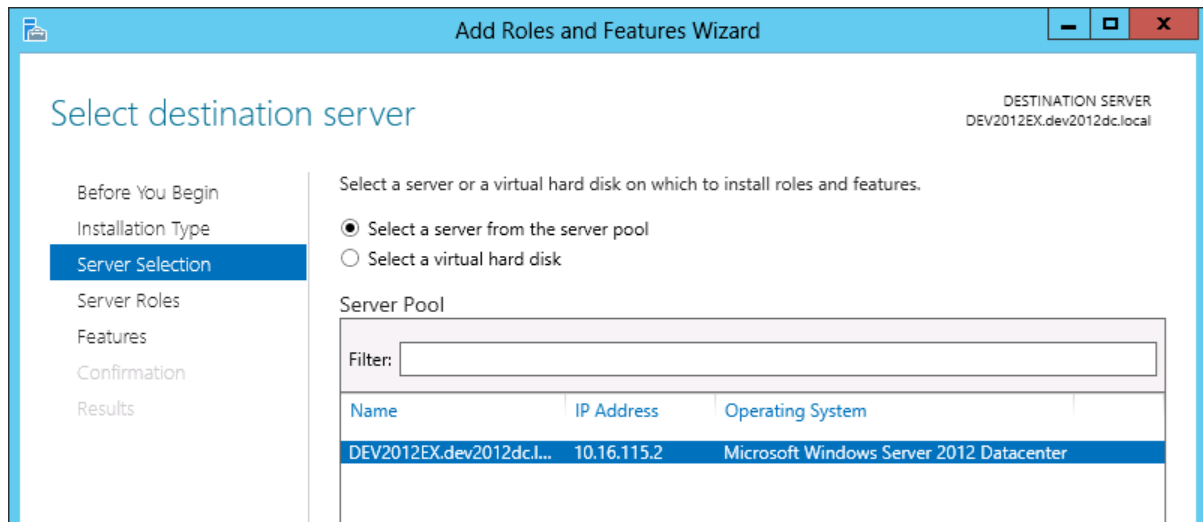
## Installation of IIS on MS Windows Server

To install Internet Information Services (IIS):

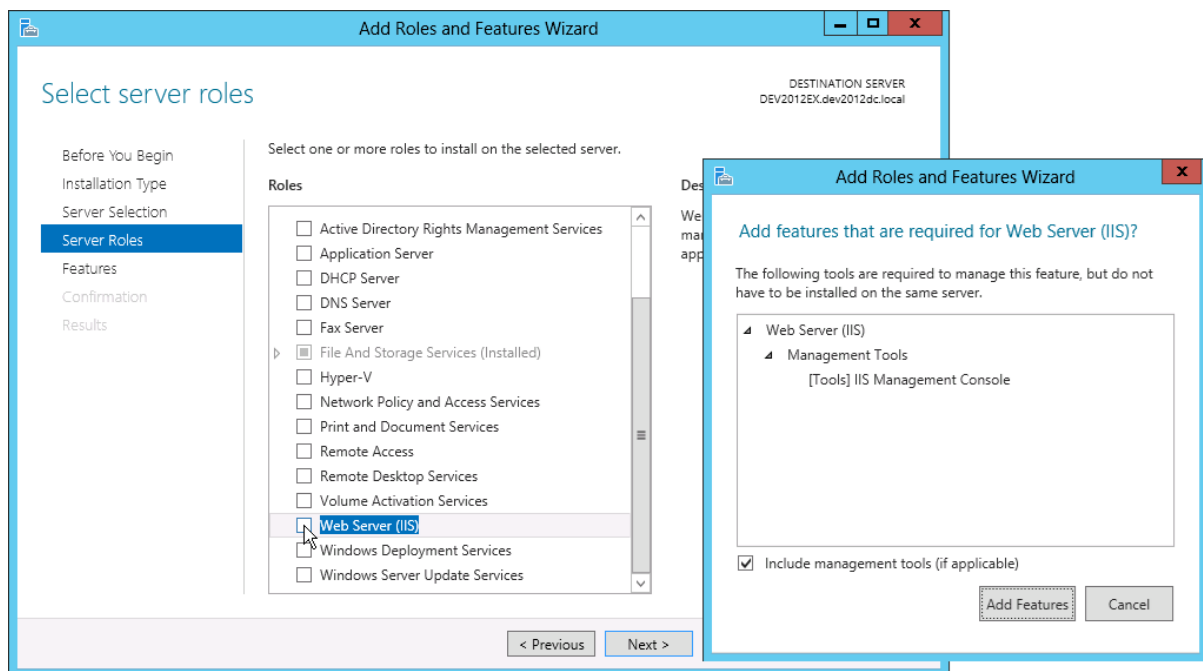
1. Click **Start /Administrative Tools** and select **Server Manager**.
2. Click **Manage / Add Roles and Features**.



3. Click **Next** and **Next** again. In the **Select destination server** make sure the Archive Manager server is selected and click **Next**.

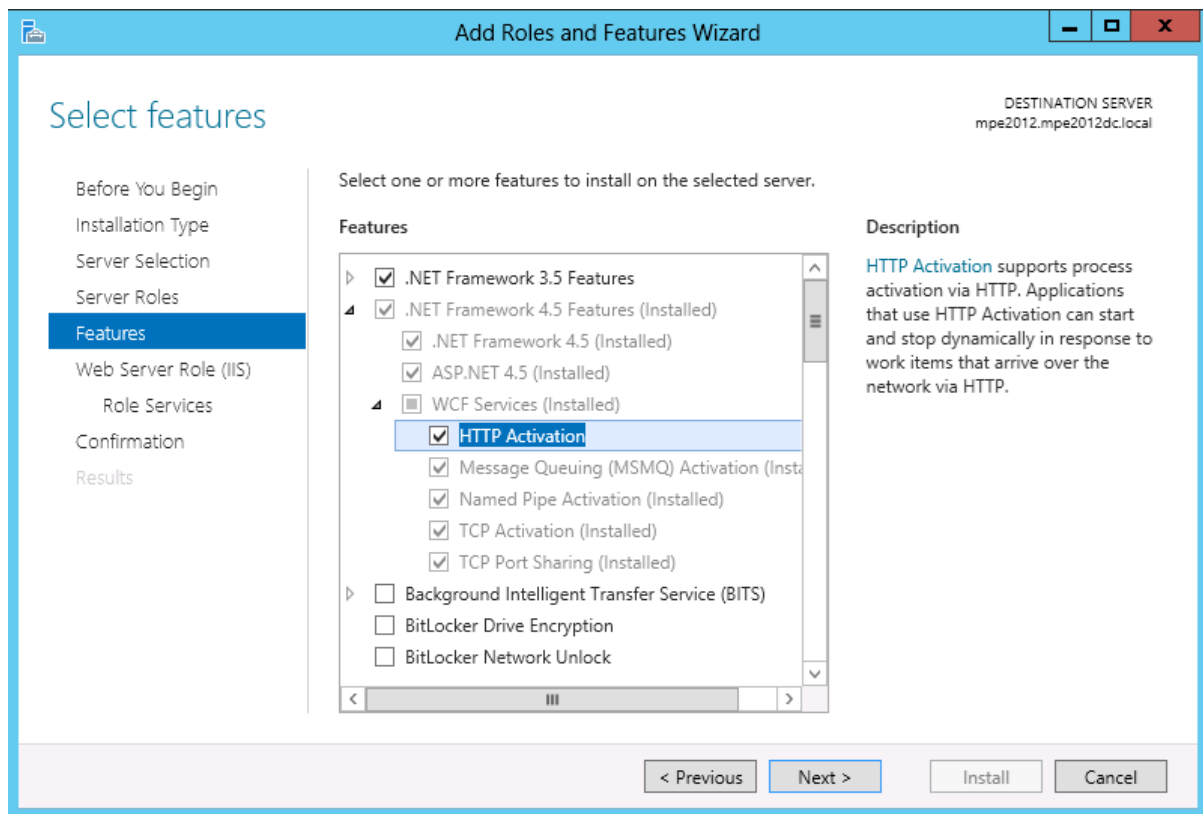


4. Select **Web Server (IIS)** role. In the pop-up leave the **Include management tools** check box selected and click **Add Features**. Then keep clicking **Next** until the **Features** dialog.



5. Leave the default features selected plus select the following:
  - .NET Framework 3.5 Features
  - .NET Framework 4.5 Features / .NET Framework 4.5
  - .NET Framework 4.5 Features / ASP.NET 4.5

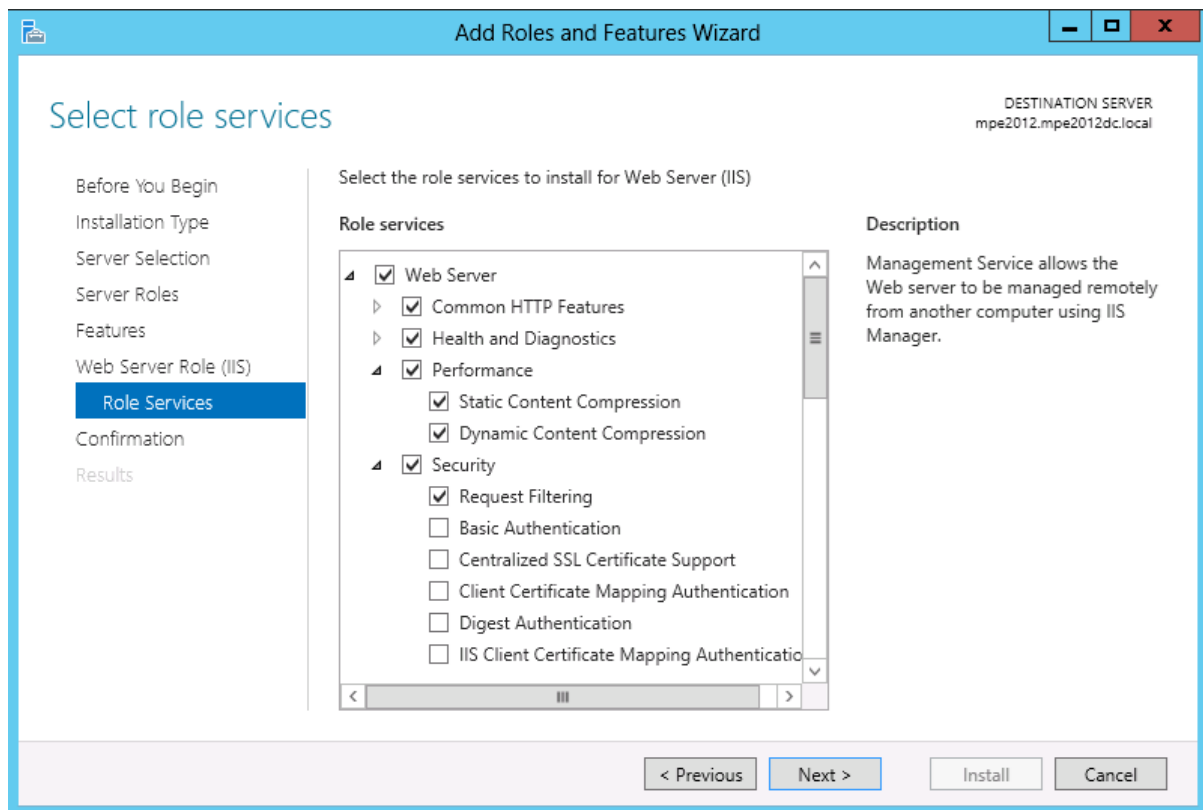
- .NET Framework 4.5 Features / WCF Services (all checkboxes under this item)



6. Click **Next** twice. On the **Roles Services** leave the default role services selected, plus select following:

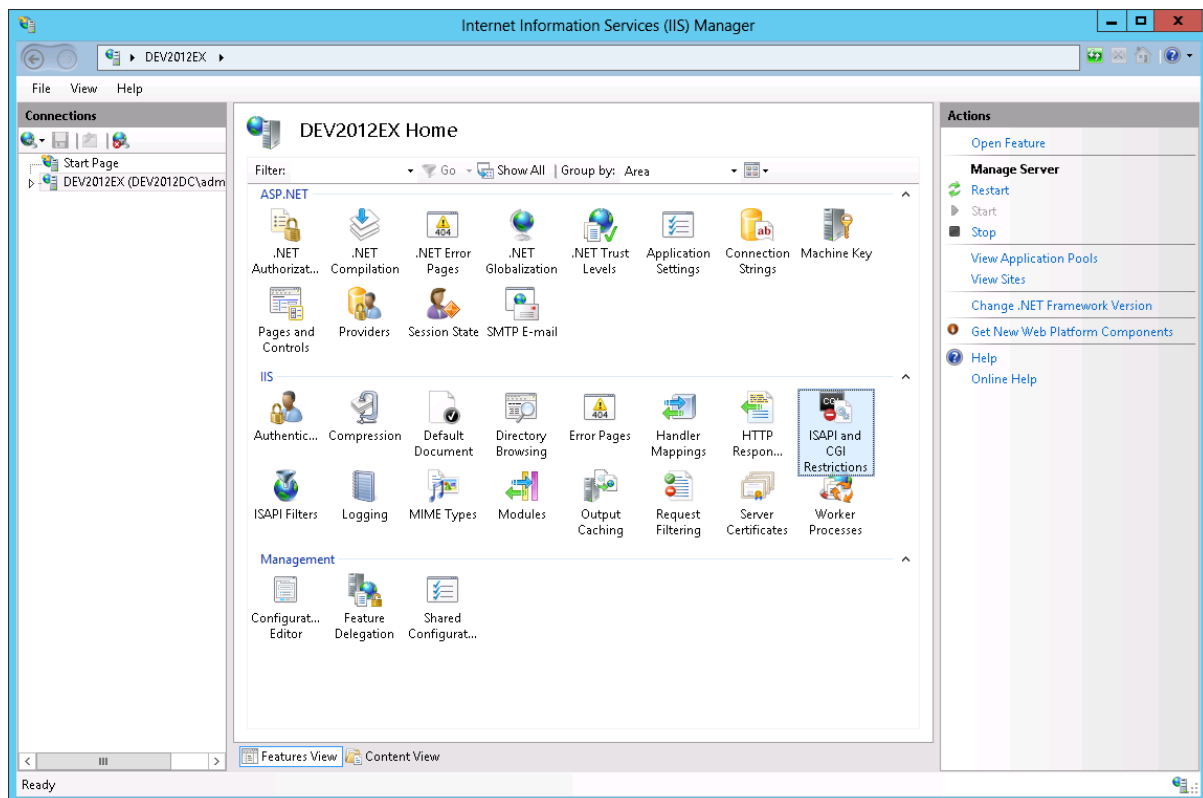
- Web Server / Performance / Dynamic Content Compression
- Web Server / Security / Windows Authentication
- Web Server / Web Server / Application Development / .NET Extensibility 3.5  
/ .NET Extensibility 4.5  
/ ASP.NET 3.5  
/ ASP.NET 4.5
- Web Server / Management Tools / IIS 6 Management Compatibility / IIS 6 Metabase
- Web Server / Management Tools / Management Service

Click Next, then Install.

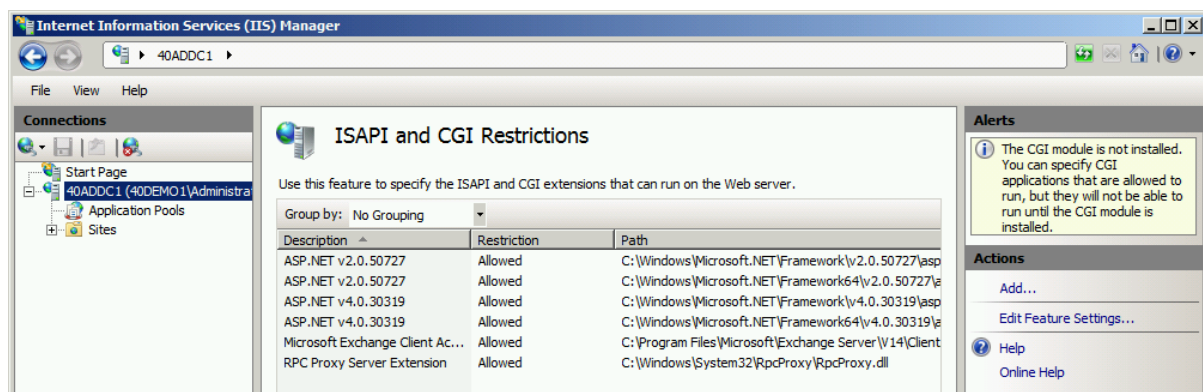


Upon installation of **Internet Information Services (IIS)** you need to enable **Web Service Extension ASP.NET v2.0** and **ASP.NET v4.0**. Follow these steps:

1. Click **Start /Administrative Tools /Internet Information Services (IIS) Manager**. Select server node and open the **ISAPI and CGI Restrictions** feature.



2. Check if **ASP.NET v2.0** and **ASP.NET v4.0** ISAPI extension is installed and allowed.



## Installation of .NET Framework

Since Archive Manager is built on .NET technology, both .NET Framework 3.5 and 4.5 is required.

You can download .NET Framework 3.5 from the following link:

<http://www.microsoft.com/en-us/download/details.aspx?id=21>

You can download .NET Framework 4.5 from the following link:

<http://www.microsoft.com/en-us/download/details.aspx?id=30653>

In case of **Windows Server 2012/2012 R2/2016/2019** both of them are added via Server Manager.

## About Us

Quest creates software solutions that make the benefits of new technology real in an increasingly complex IT landscape. From database and systems management, to Active Directory and Office 365 management, and cyber security resilience, Quest helps customers solve their next IT challenge now. Around the globe, more than 130,000 companies and 95% of the Fortune 500 count on Quest to deliver proactive management and monitoring for the next enterprise initiative, find the next solution for complex Microsoft challenges and stay ahead of the next threat. Quest Software. Where next meets now. For more information, visit [www.quest.com](http://www.quest.com).

## Contacting Quest

For sales or other inquiries, visit [www.quest.com/contact](http://www.quest.com/contact).

## Technical Support Resources

Technical support is available to Quest customers with a valid maintenance contract and customers who have trial versions. You can access the Quest Support Portal at <https://support.quest.com>

The Support Portal provides self-help tools you can use to solve problems quickly and independently, 24 hours a day, 365 days a year. The Support Portal enables you to:

- Submit and manage a Service Request
- View Knowledge Base articles
- Sign up for product notifications
- Download software and technical documentation
- View how-to-videos
- Engage in community discussions
- Chat with support engineers online
- View services to assist you with your product