



erwin Data Transformation

Release Notes

© 2022 Quest Software Inc.

ALL RIGHTS RESERVED.

This guide contains proprietary information protected by copyright. The software described in this guide is furnished under a software license or nondisclosure agreement. This software may be used or copied only in accordance with the terms of the applicable agreement. No part of this guide may be reproduced or transmitted in any form or by any means, electronic or mechanical, including photocopying and recording for any purpose other than the purchaser's personal use without the written permission of Quest Software Inc.

The information in this document is provided in connection with Quest Software products. No license, express or implied, by estoppel or otherwise, to any intellectual property right is granted by this document or in connection with the sale of Quest Software products. EXCEPT AS SET FORTH IN THE TERMS AND CONDITIONS AS SPECIFIED IN THE LICENSE AGREEMENT FOR THIS PRODUCT, QUEST SOFTWARE ASSUMES NO LIABILITY WHATSOEVER AND DISCLAIMS ANY EXPRESS, IMPLIED OR STATUTORY WARRANTY RELATING TO ITS PRODUCTS INCLUDING, BUT NOT LIMITED TO, THE IMPLIED WARRANTY OF MERCHANTABILITY, FITNESS FOR A PARTICULAR PURPOSE, OR NON-INFRINGEMENT. IN NO EVENT SHALL QUEST SOFTWARE BE LIABLE FOR ANY DIRECT, INDIRECT, CONSEQUENTIAL, PUNITIVE, SPECIAL OR INCIDENTAL DAMAGES (INCLUDING, WITHOUT LIMITATION, DAMAGES FOR LOSS OF PROFITS, BUSINESS INTERRUPTION OR LOSS OF INFORMATION) ARISING OUT OF THE USE OR INABILITY TO USE THIS DOCUMENT, EVEN IF QUEST SOFTWARE HAS BEEN ADVISED OF THE POSSIBILITY OF SUCH DAMAGES. Quest Software makes no representations or warranties with respect to the accuracy or completeness of the contents of this document and reserves the right to make changes to specifications and product descriptions at any time without notice. Quest Software does not make any commitment to update the information contained in this document.

If you have any questions regarding your potential use of this material, contact:

Quest Software Inc.

Attn: LEGAL Dept

4 Polaris Way

Aliso Viejo, CA 92656

Refer to our Web site (<https://www.quest.com>) for regional and international office information.

Patents

Quest Software is proud of our advanced technology. Patents and pending patents may apply to this product. For the most current information about applicable patents for this product, please visit our website at <https://www.quest.com/legal>.

Trademarks

Quest, the Quest logo, and Join the Innovation are trademarks and registered trademarks of Quest Software Inc. For a complete list of Quest marks, visit <https://www.quest.com/legal/trademark-information.aspx>. All other trademarks and registered trademarks are property of their respective owners.

Legend



CAUTION: A CAUTION icon indicates potential damage to hardware or loss of data if instructions are not followed.



IMPORTANT, NOTE, TIP, MOBILE, or VIDEO: An information icon indicates supporting information.

erwin Data Transformation – Release Notes

Updated – October 2022

Version – 9.2.3

What's New in erwin Data Transformation

erwin DT 9.2.3 is the latest release of the erwin DT.

Service Release - v9.2.3

This release brings a new adapter to support iTop.

Patch Release - v9.2.1

This release comes with key fix since the last service release:

- Fixed Spring Framework CVE-2022-22965 Vulnerability.

Service Release - v9.2

This release brings several key fixes since the last service release:

- Handle directory changes in CCrestartServices - Changed the script generation for CCrestartServices.bat to handle cases where the install path and data path are on different drives.
- Fixed 'Diagrammed on' relationships not exporting.

Service Release - v9.1.1.0

This release brings out the changes since the last GA release:

- PEGA adapter (hidden by default, enabled for end users through configuration)
- Support for proxy exclusion list for RSA and Service Now adapters.
- Fix for RSA adapter with multi-page reports not being parsed due to ByteOrderMark character.
- Fix for the RSA adapter to deal with additional field types.

-
- Fix for Cast Highlight adapter dealing with "technologies".
 - Fix for grouping datasets when there is an empty dataset.
 - Fix for bug in mapping to CM Admin model when not source fields were mapped.
 - Fix for bug in workflow engine that resulted in unexpected errors when database read began before write was complete.

Major Release - v9.1

New adapters added to support:

- GLPi - Open Source Asset Tracking
- Apiman - Open Source API Management
- XL Deploy - Automated Software Deployment
- Oracle 12 Support
- Evolve - Diagram Migration Capability [Requires additional PSG Support and Components]

The CMLoader is now able to migrate diagrams between models, under the following conditions:

1. Workflow operation involves the object type DIAGRAM
2. CwImport.exe, CwSingleExport.exe, CwSingleExportAndImport.exe are found into Evolve Suite BIN folder
3. Source and Target models share the same design, at least for diagrammed objects



The original diagrams being overwritten in the target model, based on their UUID, are exported in XML to the following file:

'Diagrams_DT_TARGET_BAK_YYYYMMDD_hh24mmssmillis.xml'

in the operations folder for backup and rollback support, before being updated.

Migration is based on the native XML import/export Evolve capability, thus keeping UUID for all diagrammed objects.

Improvements to:

- ServiceNow Adapter

Improved filename handling ensures a consistent name can be used, allowing UTF-8 configuration in ServiceNow

- Evolve Adapter

Scriptnames being split at underscore prevented properties with underscore in script name from being resolved

Upserting Associations by UUID now copes with renamed Source or Target Objects

- Generic JSON Adapter

Authentication improvements

- MMF Adapter

Blank dates function correctly

Other minor defect fixes and improvements.

Major Release - v9.0

In case you missed it, erwin Collector has been renamed! From this version 8 onwards Collector will be known as erwin DT (Data Transformation). As the product is decoupled from its Casewise roots, and repositioned into erwin's EDGE platform, we feel this name better reflects the products ETL capability.

erwin Mapping Manager Adapter

Pull Mappings and their attributes from erwin Mapping Manager with our new Web Services Adapter and use that data in other applications including the erwin suite*. Users can also bring across hyperlinks for specific Mappings for easy navigation.

erwin Metadata Manager Adapter

Pull data from Metadata Manager with our new Web Services Adapter and use that data in other applications including the erwin suite*.

(*erwin products must have DT Adapter)

CAST HighLight Adapter

- Domains can be read (Name, CHL ID) and used to update the source model, so to provide the context when creating new applications
- All application belonging to a parent domain and its subdomains will be read (Name, CHL ID) and used to update the source model, so to update applications in CAST
- Based on source data (Name, CAST HighLight ID, and the CAST HighLight ID of the Domain which the application belongs to are expected) the domain will be created (ID null or 0) or updated (ID equal to an existing CAST HighLight ID).
- Based on source data (Name, CAST HighLight ID, and the Name and CAST HighLight ID of the Domain which the application belongs to are expected) the application will be created (ID null or 0) or updated (ID equal to an existing CAST HighLight ID).

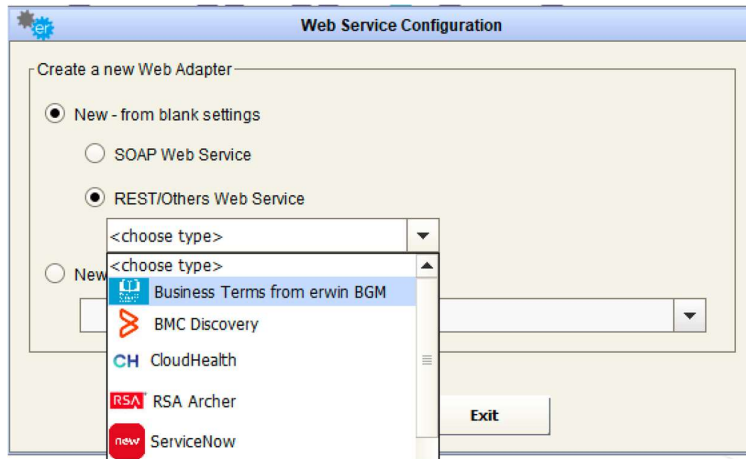
Fixes

- Languages other than English used an incorrect encoding
- SQL server authentication

Major Release - v8.4

Integrate with erwin Business Glossary Manager

Push and Pull Business Terms from erwin Business Glossary Manager with our new Web Services Adapter and use that data in other applications including the erwin suite. Relate to Business Processes within erwin EA or connect your Business Terms to data in external applications such as ServiceNow



Encrypt/Decrypt Databases in erwin DT

Make your database more secure by encrypting it within erwin DT, you'll also be able to encrypt workflow configurations in the database and set/change encryption key.

Plus...

- We've added support for additional time-zones
- Application names have been updated
- Switched AdoptOpenJDK Java to Hotspot, from J9
- Added support for containment hierarchies in EA agile v3
- Improved performance for XSLX file processing

Fixes

- Fixed Date/Time range writing to EA agile v3
- Improved startup stability for services
- Numerical chars from Adapter name are omitted when selecting Adapter during WF creation

Security Fixes

- Command Injection vulnerability improvements

-
- Removed Trustmanager acceptance of specific certificates
 - Fixed insecure randomness concern

Major Release - v8.3 (Service Release)

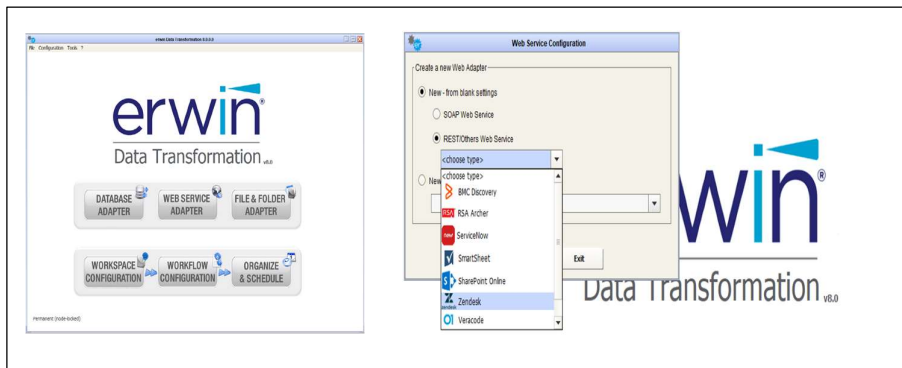
This release improves several areas of the product areas, including:

- Now packaged with Adopt OpenJDK 8 to replace Oracle's JDK. Note that DT still supports Oracle JDK 8, but this is not included with the package.
- erwin Licensing support now include Offline Licenses (*Note that users of DT 8.1 will need to reapply their license when upgrading to 8.3*)
- Increased maximum character length for SQL Queries. It's now easier to upgrade from 7.0, for those with long queries.
- Security and defect fixes.

Major Release - v8.1

This release improves several areas of the product areas, including:

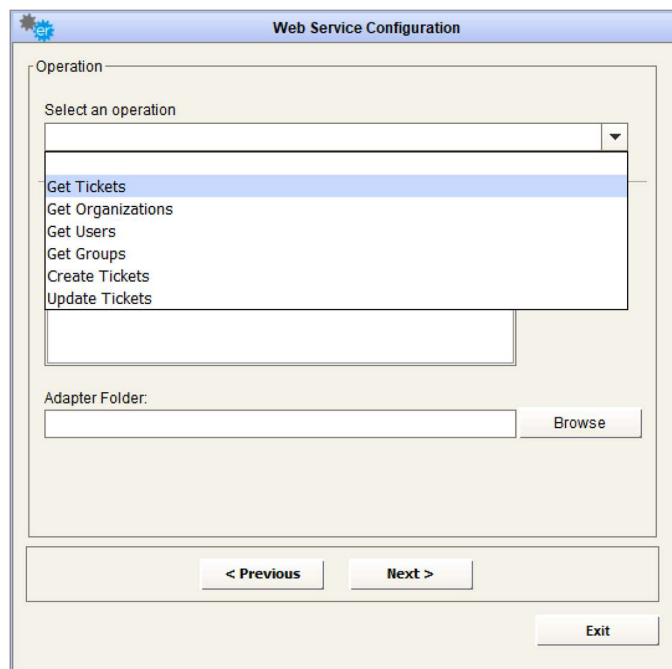
- A new name for Collector.... erwin Data Transformation, or erwin DT for short.
- erwin Licensing now governs the product, replacing the 2 step licensing used by Casewise.
This means that you will need to *contact support to receive a new licensing code*.
The erwin licensing system does now require the software to have access to the internet, in order to authenticate your license, each time the product is used. Note, if there is no connection available for a short period of time (1 to 3 days).
The software will continue to function, but will eventually request internet access to continue.
- Simpler usage - now no need to login to erwin EA/BP.
The next thing you will notice, after a new name and upgraded licensing, is the fact that you don't need to login anymore.
Since erwin DT is becoming more central to the ETL landscape of erwin EDGE, and EA or BP are not always part of the workflow, the login to erwin EA/BP no longer made sense. This makes for simpler experience when using erwin DT, only requiring login to EA/BP when an input or output adapter to those products will actually be required.
- We now package the latest Java Runtime release for Java 8 (JRE 8u201). In future releases we intend to upgrade further to Java 11, but 8 seems to remain popular with customers, and this release includes all the latest security patches.



- New Adapter Support. We've been busy providing integrations to more products and platforms. So, we can now talk; Veracode, Zendesk, CloudHealth, Open Group File Format, SQL Database schema, and also have improved integration with erwin EA agile and DGc.
- Database Adapters:
 - Database Metadata adapter (for JDBC databases)
Read meta data (schema) from your favourite JDBC compatible databases. This allows a simple "Reverse Data Engineering" facility directly in Collector, so you can see your schema in other products, including erwin DGc.

- REST/API Adapters:

- Veracode adapter - read status information about your Applications into your erwin products, to ensure your Enterprise Architecture is telling you the most up to date information.
- Zendesk adapter - If you use Zendesk for tickets, it is now possible to read a whole host of information directly into your erwin products. Track tickets against Applications and provide updates inside your erwin product, and feed that back to the ticket in Zendesk. Even create new tickets against your EA, BP or DG project right inside erwin, and have your support team handle them as usual.



- CloudHealth adapter - Being able to know the state of your cloud applications from inside your Enterprise Architecture is critical to knowing the health of your EA as a whole. Now you can bring this information into your erwin products, and include this in your dashboards.
 - Basic Generic JSON Adapter - Have an API you wish to talk to that we don't support. We can now handle simple JSON requests without a bespoke adapter. But as always, if you have something you'd really like to talk to, let us know and we'll see how we can help.
- Transformations:
 - Added transformation to allow the export of elements and their relationships and properties into the Open Group File Format (OGFF). Allowing simple export of your EA assets for consumption by other OGFF compatible products.

- Added transformation to allow the import of OGFF elements and then their relationships into erwin products. Bring data in from your other OGFF compatible products.
- erwin Workspace and Model Adapters:
 - Application connections and workspace/model adapters for EA Agile, DGC, or EA can be created from within the client.
- Other Improvements:
 - For those who have REALLY complex workflows, you can now use more than 8 adapters in a single workflow
 - An external identifier stored as a property of an erwin EA/BP object can now be used when importing a dataset in EA Agile or DGC. This allows strong binding between objects in the two separate tools. Allowing updates to be more accurate, including the ability to rename in one tool, and see this in the other.
 - Workflows for any workspace/model adapter can be created and run without a separate logon
 - Lots of other little tweaks and fixes!

Resolved Issues and Enhancements

The following issues were resolved in this release:

RFA	Description
8.4.1.2	
Bug Fix	Fixed an issue with empty cells in the Excel Adapter
8.4.1.1	
Bug Fix	Fixed an issue with the start row/column in the Excel Adapter
Bug Fix	Fixed minor issues with install and configuration
8.4.1.0	
Enhancements	Added support for containment hierarchies in EA agile v3 Added support for encrypting the workflow configuration in the database Introduce DG BGM adapter to support Business Term transfer Now able to use a different DG sitename, than default
Bug Fix	Fixed Date/Time range writing to EA agile v3
Performance	Reduced memory consumption and improved the speed of XSLX file processing

Security Fix	Fixed insecure randomness concern
Bug Fix	Improved startup stability for services
Security Fix	Removed Trustmanager acceptance of specific certificates
Changed	Switched AdoptOpenJDK Java to Hotspot, from J9
Security Fix	Command Injection vulnerability improvements
Bug Fix	Numerical chars from Adapter name are omitted when selecting Adapter during WF creation
Changed	Renamed DG to EA Agile V3 - in line with new marketing
8.3.0.0	
Enhancements	<p>erwin Licensing now supports offline licensing.</p> <p>Added support for AdoptOpenJDK</p> <p>Packaged AdoptOpenJDK 8 installer rather than Oracle JDK 8 installer</p> <p>Added the ability to extract "Created At" and "Updated At" fields from EA Agile</p>
Bug Fix	EA Agile Adapter: Fixed issue with mapping to EA Agile by a value other than the name.
Bug Fix	JDBC SQL Adapter: Increased the maximum character length for SQL queries; linting on save was added in an earlier version of Collector (7.5), which meant that those migrating from 7.0 were unable to migrate, as they were unable to edit their SQL queries without hitting the character limit.
Bug Fix	CloudHealth Adapter: Bug Fix for CloudHealth GCP Project rules support.
Bug Fix	EA Agile Adapter: Fixed bug with posting single array values to EA Agile.
Security Fix	Password Management: Use of a hardcoded password in a part of the tool removed.
Security Fix	Password Management: Use of a hardcoded password in a comment removed.
Security Fix	Password Management: All passwords stored in the database are now encrypted appropriately.
8.1.0.1	
Enhancement	<p>CloudHealth can now manage objects:</p> <p>Renaming: the target system identifier – ref_id – can be (optionally) used as operation key.</p> <p>Deletion: the synchronization – i.e. delete an object in CloudHealth if not included in source data – is possible with the use of a parameter for the PUT operation (from official API documentation):</p> <p>allow_group_delete</p> <p>Boolean that defines whether an existing Group should be deleted if the posted</p>

	<p>schema does not contain at least one rule that applies to that Group. set to “true” by default.</p> <p>This should effectively synchronize the target system, based on the fact that the entire object set is provided in the PUT, as previously agreed. Unfortunately, CloudHealth have confirmed that this is currently affected by a bug, but as soon as it is fixed, it should work with no additional changes to DT.</p>
Upgraded	Updated packaged jdk from jdk-8u191 to jdk-8u201
Bug Fix	Fixed bug relating to the use of an alternative identifier as key for POSTs to EA Agile/DGC where the key contained a space in its name.
Modified Behaviour	In DGC object export, a relationship involving two objects of the same type that have the same relationship name in both directions and are not compositions will be considered as being non-directional, and the related object should therefore appear for both the source and the target of the relationship.
Bug Fix	Fixed defect relating to object deletion from erwin EA
Bug Fix	Fixed defect where workflows involving an EA/BP adapter for a remote connection, as the source, were not showing up in the scheduler.
Bug Fix	Fixed defect where the scheduler UI was taking too long to load, making DT appear to be frozen.
Bug Fix	Fixed defect where the wrong username could be saved for an EA/BP model adapter.
Bug Fix	Installer: Fixed bug where the latest user manual was not updated if a previous version of the user manual was left over from a previous install.
8.0.0.2 - Beta (RC3)	
Enhancement	Licensing: Added support for Proxy Servers when using the new licensing
Bug Fix	Remote batch jobs: Fixed an issue where remote batch jobs (PSExec) would not run
Bug Fix	Transform: Fixed a bug where newly added transforms did not have the file extension set correctly
Documentation	Help: Updated documentation details Proxy support, and better describes the use of the Open Group File Format Adapter
8.0.0.1 - Beta (RC2)	
Bug Fix	Adapter: Fixed bug where Exchange connections would not appear for selection in the model configuration
Bug Fix	Transform: Fixed bug in "Sum Values in Column" transformation

Bug Fix	Compatibility: Fixed bug that prevented model backup (user will need to re-save the model adapter if created in an earlier version of DT/Collector)
Enhancement	Compatibility: Added support for SQL Server 2016. We now support SQL Server 2012r2, 2014 and 2016.
Support Change	Compatibility: Dropped support for SQL Server 2005 and SQL Server 2008
Enhancement	Added support for proxy servers
Enhancement	<p>Added an "Integrated Security" checkbox for configuring database adapters when using SQL Server:</p> <p>- Note: When running the workflow, the service execution user will be used. However, when setting up the adapter, the user that DT was run under will be used. These may be different users, and if the user that the services are run under, doesn't have access to the database, the workflow will fail.</p>
8.0.0 - Beta (RC1)	
Bug Fix	Scheduler: Fixed bug where email configuration used for email notification on job sequences could not be edited
Bug Fix	Fixed a bug where some fields would disappear from the filters list when modifying an existing workflow that used an EA Agile or DGC export adapter as a source
Bug Fix	Fixed bug where an FTP PUT adapter could not be configured and run correctly when using folders other than "/"
Bug Fix	When configuring an FTP adapter, the correct error message will now be displayed
Bug Fix	Fixed bug that could result in persistent wait cursor when the user cancels the deletion of a workspace/model adapter

Product Licensing

During first erwin DT log on, users will be prompted to enter an activation code. The activation code will be released by ServiceDesk. For further details on licensing, consult the erwin DT User Manual.

About Us

Quest creates software solutions that make the benefits of new technology real in an increasingly complex IT landscape. From database and systems management to Active Directory and Office 365 management, and cyber security resilience, Quest helps customers solve their next IT challenge now. Around the globe, more than 130,000 companies and 95% of the Fortune 500 count on Quest to deliver proactive management and monitoring for the next enterprise initiative, find the next solution for complex Microsoft challenges and stay ahead of the next threat. Quest Software. Where next meets now. For more information, visit www.quest.com.

Technical support resources

Technical support is available to Quest customers with a valid maintenance contract and customers who have trial versions. You can access the Quest Support Portal at <https://support.quest.com>.

The Support Portal provides self-help tools you can use to solve problems quickly and independently, 24 hours a day, 365 days a year. The Support Portal enables you to:

- Submit and manage a Service Request
- View Knowledge Base articles
- Sign up for product notifications
- Download software and technical documentation
- View how-to-videos
- Engage in community discussions
- Chat with support engineers online
- View services to assist you with your product.