

Quest® Archive Manager for Exchange 8.9

Common Upgrade Guide



© 2024 Quest Software Inc. ALL RIGHTS RESERVED.

This guide contains proprietary information protected by copyright. The software described in this guide is furnished under a software license or nondisclosure agreement. This software may be used or copied only in accordance with the terms of the applicable agreement. No part of this guide may be reproduced or transmitted in any form or by any means, electronic or mechanical, including photocopying and recording for any purpose other than the purchaser's personal use without the written permission of Quest Software Inc.

The information in this document is provided in connection with Quest Software products. No license, express or implied, by estoppel or otherwise, to any intellectual property right is granted by this document or in connection with the sale of Quest Software products. EXCEPT AS SET FORTH IN THE TERMS AND CONDITIONS AS SPECIFIED IN THE LICENSE AGREEMENT FOR THIS PRODUCT, QUEST SOFTWARE ASSUMES NO LIABILITY WHATSOEVER AND DISCLAIMS ANY EXPRESS, IMPLIED OR STATUTORY WARRANTY RELATING TO ITS PRODUCTS INCLUDING, BUT NOT LIMITED TO, THE IMPLIED WARRANTY OF MERCHANTABILITY, FITNESS FOR A PARTICULAR PURPOSE, OR NON-INFRINGEMENT. IN NO EVENT SHALL QUEST SOFTWARE BE LIABLE FOR ANY DIRECT, INDIRECT, CONSEQUENTIAL, PUNITIVE, SPECIAL OR INCIDENTAL DAMAGES (INCLUDING, WITHOUT LIMITATION, DAMAGES FOR LOSS OF PROFITS, BUSINESS INTERRUPTION OR LOSS OF INFORMATION) ARISING OUT OF THE USE OR INABILITY TO USE THIS DOCUMENT, EVEN IF QUEST SOFTWARE HAS BEEN ADVISED OF THE POSSIBILITY OF SUCH DAMAGES. Quest Software makes no representations or warranties with respect to the accuracy or completeness of the contents of this document and reserves the right to make changes to specifications and product descriptions at any time without notice. Quest Software does not make any commitment to update the information contained in this document.

If you have any questions regarding your potential use of this material, contact:

Quest Software Inc.
Attn: LEGAL Dept.
4 Polaris Way
Aliso Viejo, CA 92656

Refer to our Web site (<https://www.quest.com>) for regional and international office information.

Patents

Quest Software is proud of our advanced technology. Patents and pending patents may apply to this product. For the most current information about applicable patents for this product, please visit our website at <https://www.quest.com/legal>.

Trademarks

Quest, the Quest logo, and Metalogix are trademarks and registered trademarks of Quest Software Inc. and its affiliates. For a complete list of Quest marks, visit <https://www.quest.com/legal/trademark-information.aspx>. All other trademarks and registered trademarks are property of their respective owners.

Legend



CAUTION: A caution icon indicates potential damage to hardware or loss of data if instructions are not followed.



IMPORTANT, NOTE, TIP, MOBILE OR VIDEO: An information icon indicates supporting information.

Quest® Archive Manager for Exchange Common Upgrade Guide

Updated March 2024

Version 8.9

Contents

About this document	4
Archive Manager for Exchange	5
HSM	12
Outlook Addin	16
OWA Extension	20
PST Importer and Gatherer	26
Search	29
SMTP	33
Universal Access	35
About Us	37
Contacting Quest	37
Technical Support Resources	37

About this document

This document describes the steps to upgrade Archive Manager for Exchange and its components for a single server environment. For multi-server deployments or other cases that require special upgrades from versions older than 8.2, please contact Quest [Technical Support Resources](#).

Steps to download the install media

1. From your browser, navigate to the <https://www.quest.com/products/archive-manager-for-exchange> page
or
navigate to the <http://www.quest.com/trials> page. Locate the product Archive Manager for Exchange.
2. Click the **Download Free Trial** button.
3. Fill the *Download Your Free Trial* registration form and click **Download Trial**. The file download page appears.
4. Download the install media zip file.
5. The trial license key is specified in the email that is sent to you.
6. Ensure that the files are available locally on the computer on which you are planning to install the Archive Manager for Exchange components.

Archive Manager for Exchange

Upgrading Archive Manager implies that a previous version of Archive Manager for Exchange is installed.



NOTE: Before you upgrade, we recommend you take a backup of the Archive Manager database.

Archive Manager for Exchange can be upgraded in one of two ways:

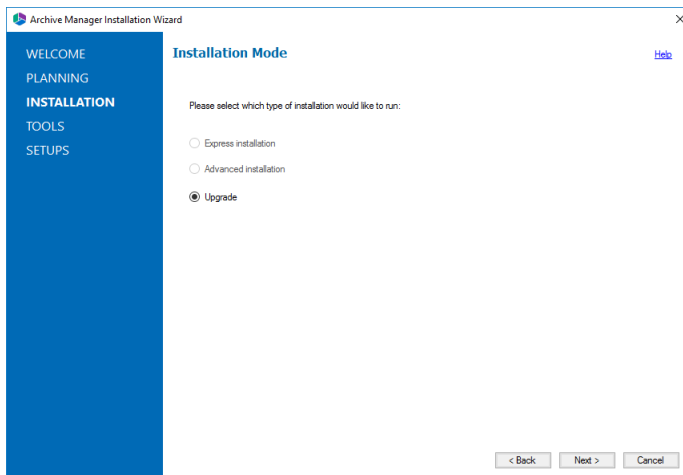
- automatically, with the Archive Manager installer. This method automatically upgrades Archive Manager for Exchange on the same server where it was previously installed.
- manually, using the *Archive Manager for Exchange Setup.exe* file. This method manually upgrades Archive Manager for Exchange on the same server where it was previously installed.

In this chapter:

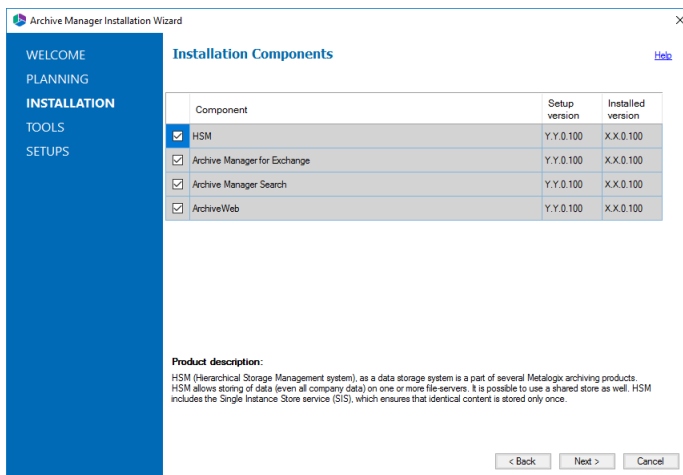
- [Steps to automatically upgrade with the Archive Manager installer](#)
- [Steps to manually upgrade with the Archive Manager for Exchange installer](#)
- [Steps to manually upgrade the Archive Manager for Exchange database](#)

Steps to automatically upgrade with the unified product installer

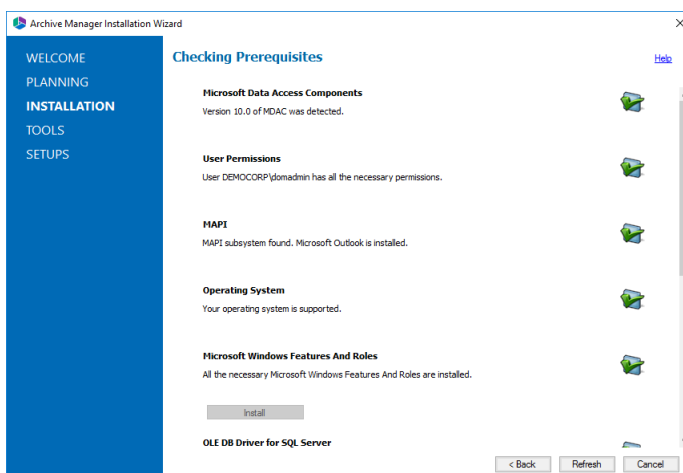
1. Download the latest Archive Manager for Exchange install media. For instructions see [Steps to download the install media](#).
2. Run the **Quest Archive Manager Installation Package** to extract the files to a local folder.
3. The wizard checks whether the Archive Manager for Exchange installation requires an upgrade. If it does, the **Upgrade** option will be selected automatically.



4. Click **Next**. The **Installation Components** page appears with a list of components that are already installed on the server. Select the components you want to upgrade. You should upgrade all the components to ensure the application features work as expected.



5. Click **Upgrade**. The **Checking Prerequisites** page appears. A check is conducted to find out if a new prerequisite is needed for the upgrade.



6. Click **Next**. The **Superuser Account** page appears. Specify and confirm the password.

i | **NOTE:** The **Superuser name** cannot be changed.

Archive Manager Installation Wizard

WELCOME
PLANNING
INSTALLATION
TOOLS
SETUPS

Superuser Account [Help](#)

It is important to specify an account under which Metalogix services will be running. It must be a local administrator and must have admin rights on Archive Manager's databases and Exchange server. If you have more than one Exchange server in the domain, then this user should exist on the server with the newer version of Exchange. Please specify the credentials for this account.

Superuser name (domain user): DEMOCORP\domainadmin
Password:
Re-type password:

< Back Next > Cancel

7. Click **Next**. The **Summary Installation** page appears. This page presents information about component versions that will be installed after the update (**Setup version** column), and versions that are currently installed (**Installed version** column).
 - a. Select the check box **Start Archive Manager for Exchange** to open the Archive Manager for Exchange Administration Center (AMAC).
 - b. Select the check box **I understand that the operation cannot be undone...** to confirm that you have acknowledged the upgrade. When the check box is checked, the **Upgrade** button is activated and you can proceed with the upgrade.

Archive Manager Installation Wizard

WELCOME
PLANNING
INSTALLATION
TOOLS
SETUPS

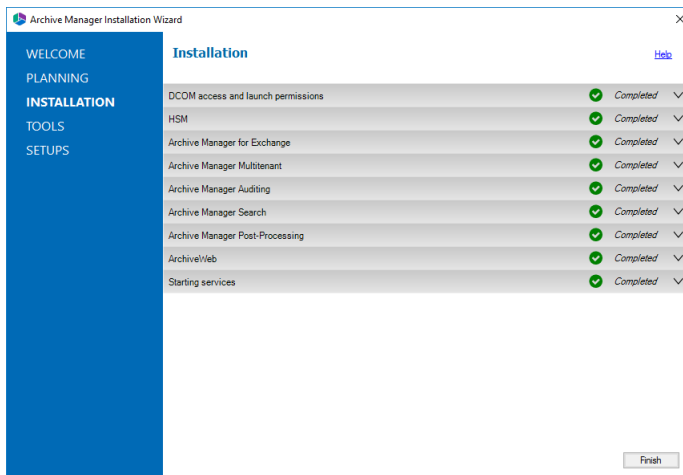
Summary Installation [Help](#)

Component	Setup version	Installed version
HSM	Y.Y.0.100	X.X.0.100
Archive Manager for Exchange	Y.Y.0.100	X.X.0.100
Archive Manager Search	Y.Y.0.100	X.X.0.100
ArchiveWeb	Y.Y.0.100	X.X.0.100

☐ Manage the Organizational Forms Library
☐ Start Archive Manager for Exchange
☒ I understand that the operation cannot be undone and the additional database schema objects are required to continue with the upgrade.

< Back Upgrade > Cancel

8. Click **Upgrade** to start the upgrade. Click **Back** to return to the previous page or click **Cancel** to exit the upgrade wizard. The upgrade progress for each component is displayed and the operation is confirmed. If the upgrade wizard detects that one or more features selected for upgrade are missing or damaged, the maintenance wizard for the feature will appear. Select the **Repair** option and complete the steps in the wizard to reinstall the feature.

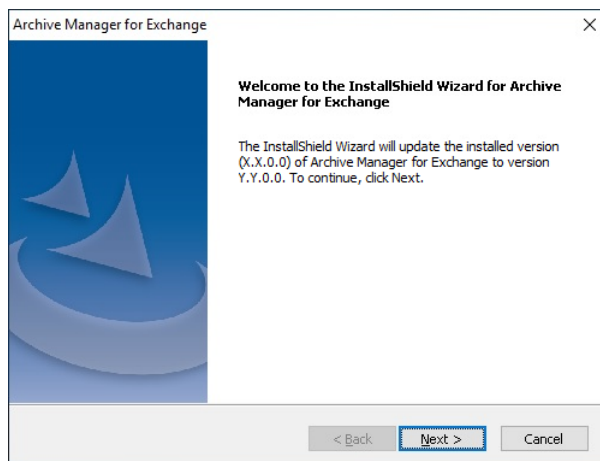


9. Click **Finish** to close the wizard when all the components are upgraded.

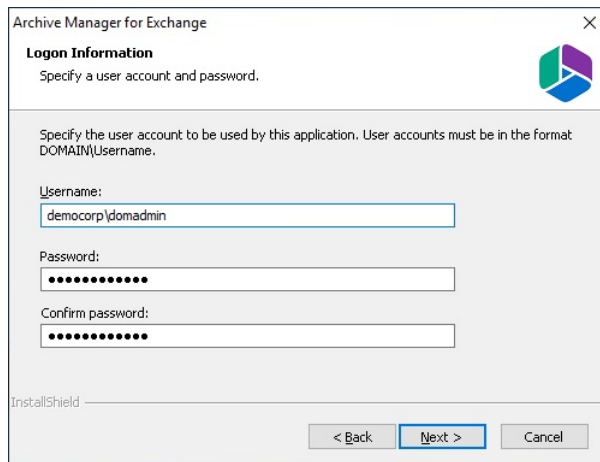
Steps to manually upgrade with the Archive Manager for Exchange installer

1. Run the Archive Manager Search installer. the default location is `C:\Archive Manager Installation Package\Archive Manager Search\Archive Manager for Exchange Setup.exe`. The *Welcome* window opens.

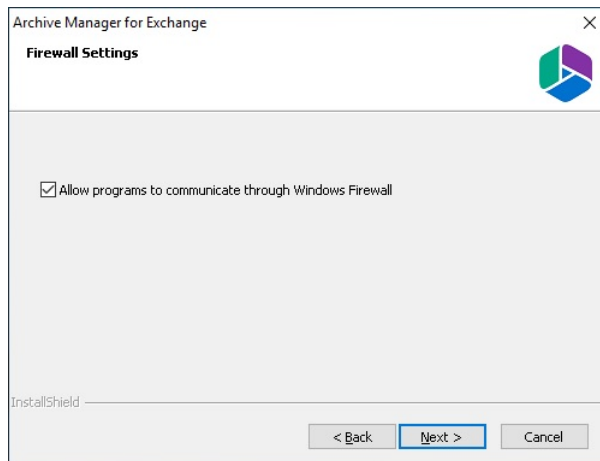
i **NOTE:** A prerequisite check occurs and missing requirements if any are displayed. Install the prerequisites.



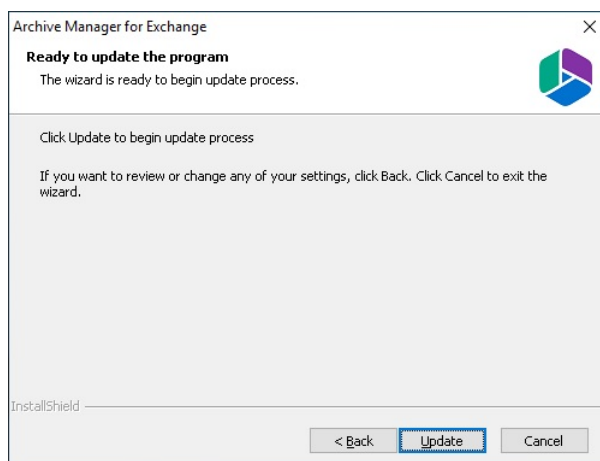
2. Click **Next**. The *Logon Information* window opens.



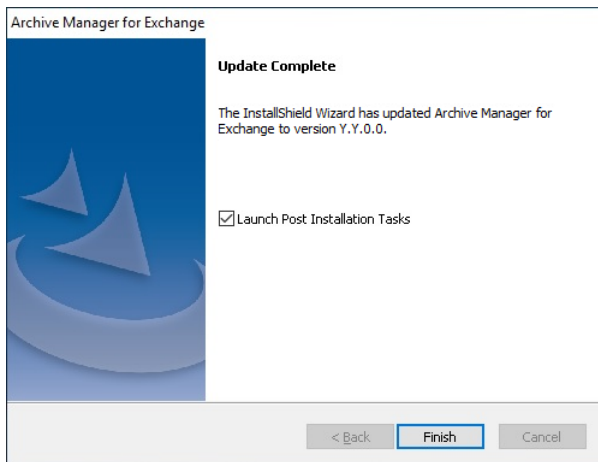
3. Click **Next**. The *Firewall Settings* window opens. Select the check box to allow communications through server firewalls. By default, the **Allow programs to communicate through Windows Firewall** is checked. This will allow critical services to communicate with the Archive Manager for Exchange service. If you clear the check box, critical services may not be able to communicate through the firewall.



4. Click **Next**. The *Ready to modify the program* window opens.



5. Click **Update** to upgrade Search. If you want to review or change the wizard settings, click the **Back** button. To exit the wizard click **Cancel**. When the upgrade completes the *Update Complete* window opens.



6. Select **Launch Post Installation Tasks** to open the *Archive Manager Configuration Tool* to manually upgrade the Archive Manager for Exchange database. Click **Finish**.

Steps to manually upgrade the Archive Manager for Exchange database

If you choose this manual process and database scripts are upgraded, you must run the scripts manually from the *Archive Manager Configuration Tool* for three components: **Exchange Archive**, **Auditing** and **Users**.

1. From the feature panel on the left in the *Archive Manager Configuration Tool*, click **Exchange Archive** and select the **Database** tab.
2. Verify that the database connection information is as expected. Then click **Run Scripts**. The *Run Scripts* selection window opens.
3. Click **Select All** to select all check boxes. Click **Next**. The *View SQL scripts* window opens.
4. Click **Next**. The *Run Scripts* authentication window opens. Enter the information as described below:
 - a. **Authentication** - authentication type used for the database. Choose either **Windows authentication** or **SQL Server authentication**
 - a. **Database user** - database login username if *SQL Server authentication* is the selected as the authentication mode.
 - b. **Password** - password of the database user if *SQL Server authentication* is the selected as the authentication mode.
 - c. (optional) Check the **I want to review the SQL Scripts** check box to view the scripts.
5. Click **Next**. If you chose to view the SQL scripts then the *View SQL scripts* window opens. If you chose to view the Oracle scripts then the *View Oracle scripts* window opens
 Click **Save Script** to save the script as a script file to a folder. Check the **Word wrap** check box to display long lines as multiple lines of text.
6. Click **Next**. The *Run SQL scripts* window reopens with the scripts you have chosen to run.

7. Click **Next**. When the status changes to *Scripts were run successfully*, click **Finish** to close the script installer. The *Scripts* section of the **Database** tab displays the status and updated version of the scripts.

For Auditing

1. From the feature panel on the left in the *Archive Manager Configuration Tool*, click **Auditing** and select the **Database** tab.
2. Repeat steps 2 to 7 as described above.

For Users

1. From the feature panel on the left in the *Archive Manager Configuration Tool*, click **Users** and select the **Database** tab.
2. Repeat steps 2 to 7 as described in the previous section.

HSM

You can automatically upgrade HSM with the Archive Manager installer. If you need to manually upgrade HSM, follow the steps described below.

i | **NOTE:** Upgrading HSM does not upgrade third party file storage systems used as HSM stores. Refer to the upgrade manuals for the third party file storage products.

In this chapter:

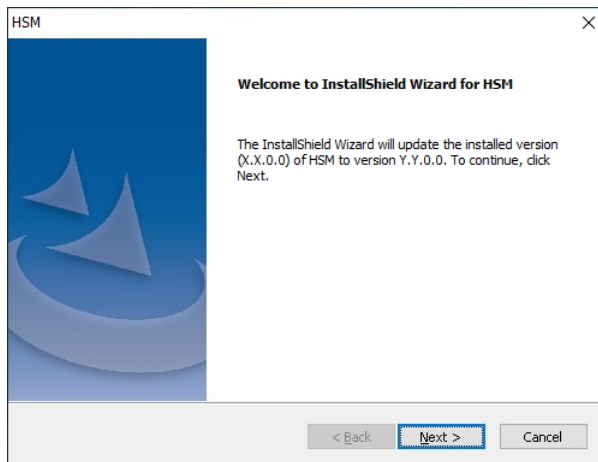
- [Steps to manually upgrade with the HSM installer](#)
- [Steps to manually upgrade the HSM database](#)

Steps to manually upgrade with the HSM installer

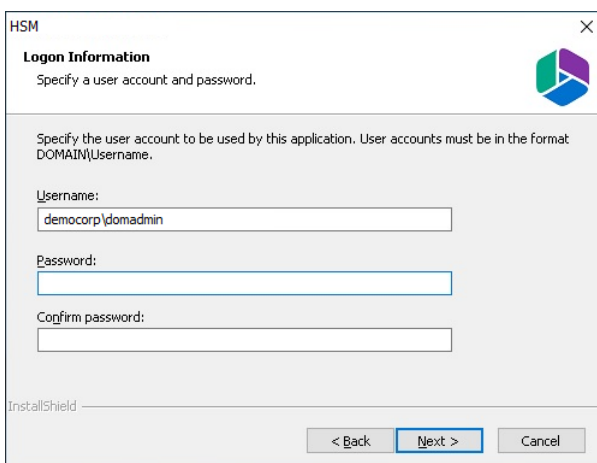
1. Log in to the HSM server with the credentials of the **superuser** (eg. **democorp\domadmin**)
2. Download the installation media. For more information see [Steps to download the install media](#).
3. Run the **Quest Archive Manager Installation Package** to extract the files to a local folder.
4. Close the unified installer wizard which starts automatically.
5. Run the HSM setup from `<Media folder>\Archive Manager Installation Package\HSM\HSM Setup.exe`

i | **NOTE:** A prerequisite check occurs and missing requirements if any are displayed. Install all missing requirements before you proceed.

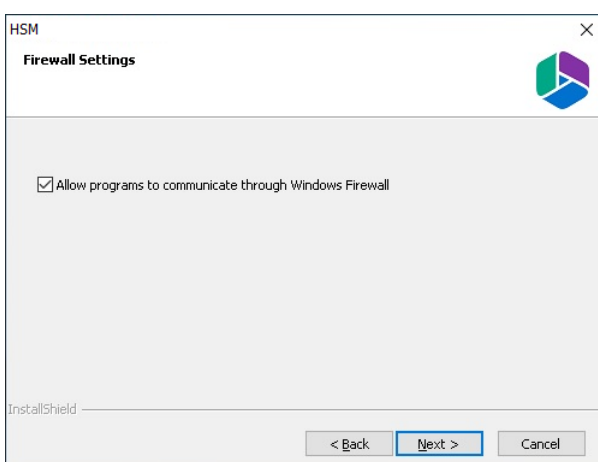
6. The *Welcome* window of the HSM installer opens.



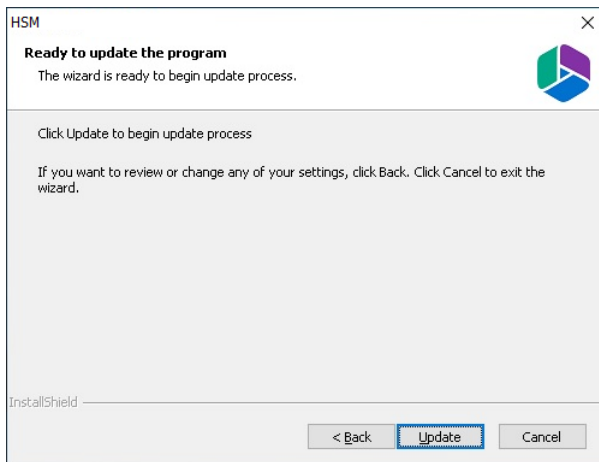
7. Click **Next**. The *Logon Information* window opens.



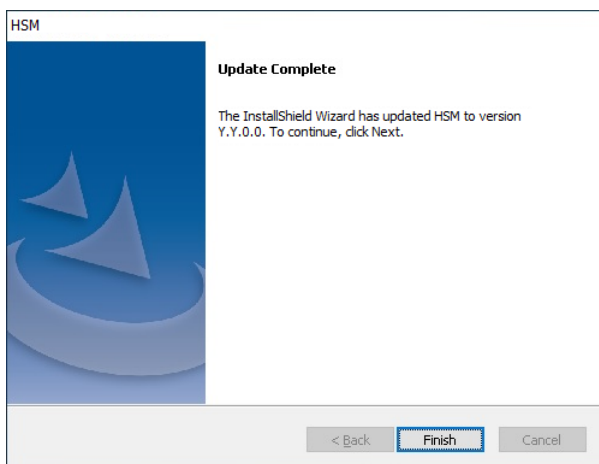
8. Click **Next**. The **Firewall Settings** window opens if the Windows Firewall is active on your computer. By default, the **Allow programs to communicate through Windows Firewall** is checked. This will allow critical services to communicate with the HSM service. If you clear the check box, critical services may not be able to communicate through the firewall.



9. Click **Next**. The *Ready to update the program* window opens.



10. Click **Update** to upgrade HSM. If you want to review or change the wizard settings, click the **Back** button. To exit the wizard click **Cancel**. When the upgrade completes the *Update Complete* window opens.



11. Click **Finish** to close the installer.

Steps to manually upgrade the HSM database

If you choose the manual upgrade process, you must run the scripts manually from the *Archive Manager Configuration Tool*.

1. From the feature panel on the left in the *Archive Manager Configuration Tool*, click **HSM** and select the **Database** tab.
2. Verify that the database connection information is as expected. Then click **Run Scripts**. The *Run Scripts* selection window opens.
3. Click **Select All** to select all check boxes. Click **Next**. The *View SQL scripts* window opens.
4. Click **Next**. The *Run Scripts* authentication window opens. Enter the information as described below:
 - a. **Authentication** - authentication type used for the database. Choose either **Windows authentication** or **SQL Server authentication**

- a. **Database user** - database login username if *SQL Server authentication* is the selected as the authentication mode.
 - b. **Password** - password of the database user if *SQL Server authentication* is the selected as the authentication mode.
 - c. (optional) Check the **I want to review the SQL Scripts** check box to view the scripts.
5. Click **Next**. If you chose to view the SQL scripts then the *View SQL scripts* window opens. If you chose to view the Oracle scripts then the *View Oracle scripts* window opens
- Click **Save Script** to save the script as a script file to a folder. Check the **Word wrap** check box to display long lines as multiple lines of text.
6. Click **Next**. The *Run SQL scripts* window reopens with the scripts you have chosen to run.
7. Click **Next**. When the status changes to *Scripts were run successfully*, click **Finish** to close the script installer. The *Scripts* section of the **Database** tab displays the status and updated version of the scripts.

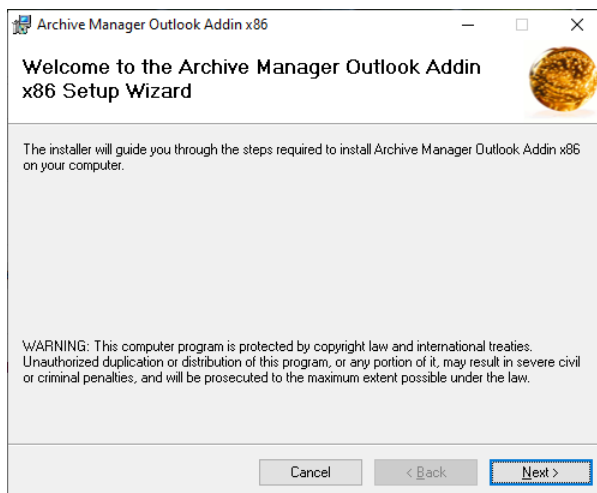
Outlook Addin

Steps to upgrade

1. Login to the client computer with the enterprise administrator credentials.
2. Close all running applications. Open **Task Manager** and verify that the process *Outlook.exe* is not running.
3. Download and unzip the installation package to a suitable media folder. For more information see [Steps to download the install media](#).
4. Run the installer. The default location is `C:\Quest\Archive Manager Installation Package\Exchange\Addin\Archive Manager Outlook Addin x86 Setup.msi` or `Archive Manager Outlook Addin x64 Setup.msi`



NOTE: Necessary prerequisites will be checked. If any prerequisite must be installed, the setup will indicate the prerequisites. Download and install the software.



5. Click **Next**. The *Retrieve, Archive server names* window opens. Enter the names of Archive Manager Retrieve and Archive servers. If Archive and Retrieve Servers are the same as in a standalone deployment, enter the same name in both text boxes. If you do not know this names please contact your system administrator.

Archive Manager Outlook Addin x86

Retrieve, Archive server names

Please enter the Retrieve and Archive server names

Retrieve Server:
AMXSERVER

Archive Server:
AMXSERVER

Cancel < Back Next >

- Click **Next**. The *Select Installation Folder* window opens. Accept the default folder path or click **Browse** to select a different folder.

Archive Manager Outlook Addin x86

Select Installation Folder

The installer will install Archive Manager Outlook Addin x86 to the following folder.

To install in this folder, click "Next!". To install to a different folder, enter it below or click "Browse".

Folder:
C:\Program Files (x86)\Metalogix\Archive Manager Outlook Addin x86

Browse

Disk Cost

Cancel < Back Next >

- You can determine the space requirement and availability by clicking **Disk Cost**.

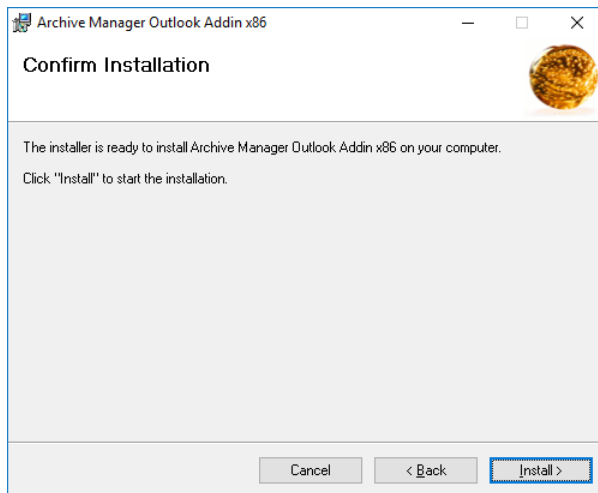
Archive Manager Outlook Addin x86 Disk Space

The list below includes the drives you can install Archive Manager Outlook Addin x86 to, along with each drive's available and required disk space.

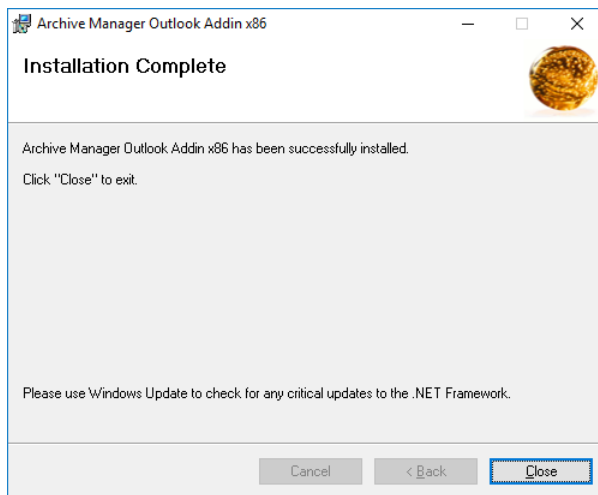
Volume	Disk Size	Available	Required	Difference
A:	0KB	0KB	0KB	0KB
C:	126GB	102GB	33MB	102GB
D:	15GB	14GB	0KB	14GB

OK

- Click **Next**. The *Confirm Installation* window opens.

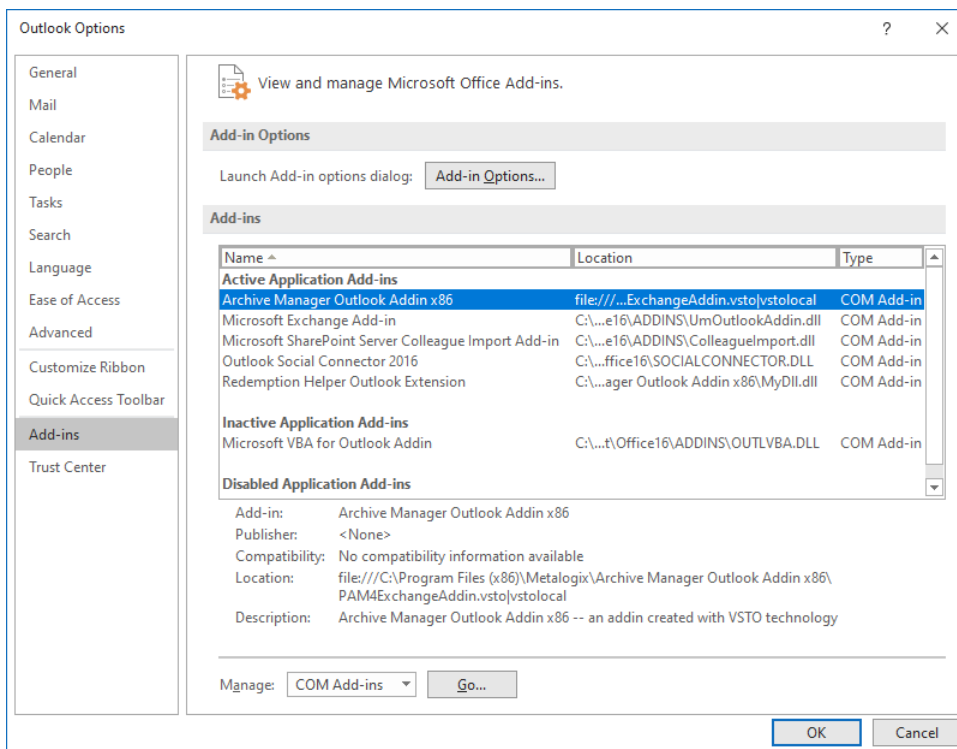


9. Click **Install**.



10. Click **Close**.

11. Open the Outlook client. Click **File > Options** to open the the *Outlook Options* window. Then click **Add-ins** and verify that the Archive Manager Outlook Addin is listed.

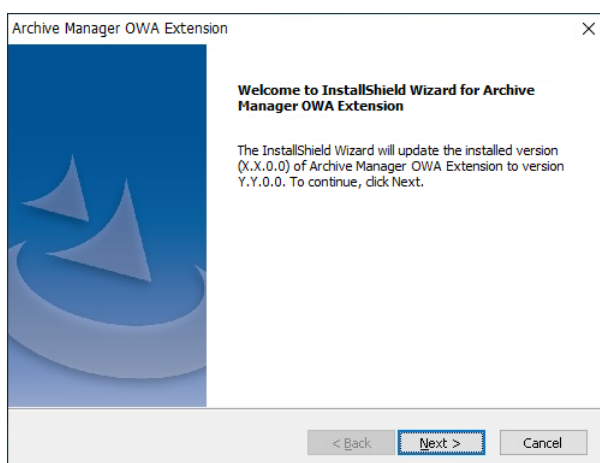


12. Click **OK** to close the *Outlook Options* window.

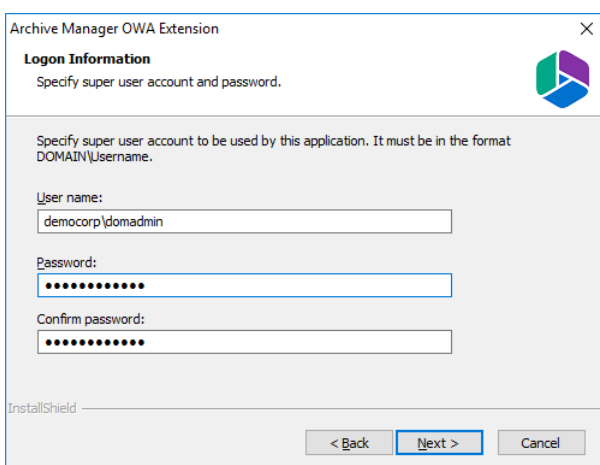
OWA Extension

Steps to upgrade

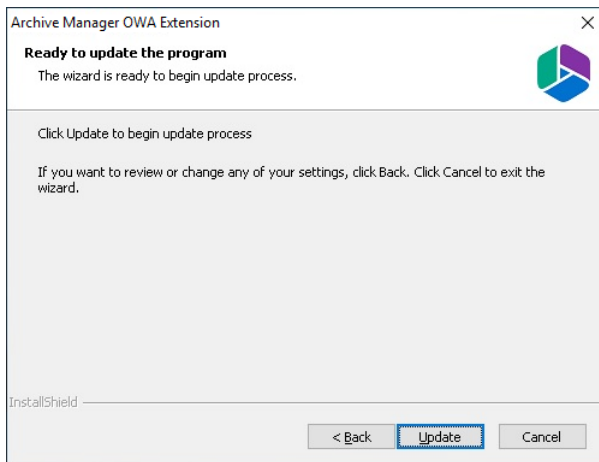
1. Download and unzip the installation package to a suitable media folder. For more information see [Steps to download the install media](#).
2. Run the OWA Extension installer. The default location is `C:\Quest\Archive Manager Installation Package\OWA Extension\Archive Manager OWA Extension Setup.exe`. The *Welcome* window opens.



3. Click **Next**. The *Logon Information* window opens. Verify that the superuser **User name** is the same. Then re-enter the **Password** and **Confirm Password**. You can change the credentials if you want.

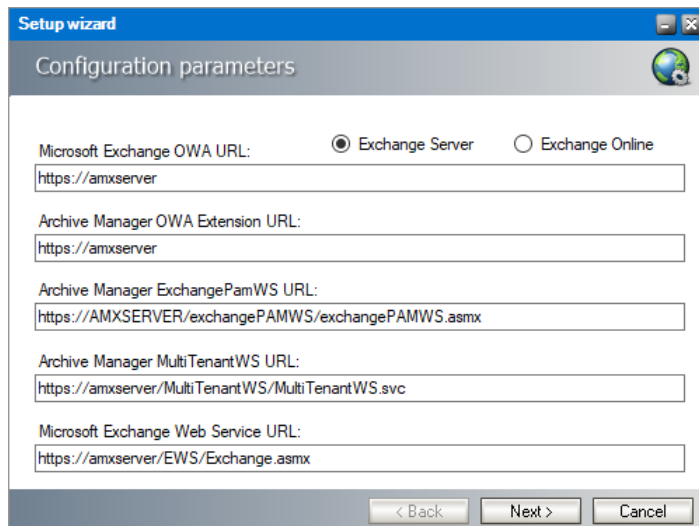


4. Click **Next**. The *Ready to update the program* window opens. If you want to review or change the wizard settings, click the **Back** button. To exit the wizard click **Cancel**. When the upgrade completes the *Update Complete* window opens.



5. Click **Upgrade**. The *Configuration parameters* window opens. Select either **Exchange Server** or **Exchange Online**. The default exchange server selection and property values may be different. Please review and revise the values as described below.

For Exchange Server:



Microsoft Exchange OWA URL - URL of the Microsoft Exchange server.

Archive Manager OWA Extension URL - URL of the server where the OWA extension is installed.

Archive Manager ExchangePamWS URL - URL for the ExchangePamWS service. This service is installed on the Archive Manager server.

Archive Manager Multi TenantWS URL - URL of the MultiTenantWS service. This service is installed on the Archive Manager server.

Microsoft Exchange Web Service URL - URL of the Exchange web service in the format `https://<exchange-server>/ews/exchange.asmx`. The Exchange Web Service is a set of web services to access the mailboxes on Exchange Server. This web service is normally installed on Exchange Servers with the **CAS** role.

For Exchange Online:

Setup wizard

Configuration parameters

Microsoft Exchange OWA URL: ☐ Exchange Server ☒ Exchange Online
 https://outlook.office365.com

Archive Manager OWA Extension URL:
 https://amxserver

Archive Manager ExchangePamWS URL:
 https://AMXSERVER/exchangePAMWS/exchangePAMWS.aspx

Archive Manager MultiTenantWS URL:
 https://amxserver/MultiTenantWS/MultiTenantWS.svc

Microsoft Exchange Web Service URL:
 https://outlook.office365.com/EWS/Exchange.aspx

< Back Next > Cancel

Microsoft Exchange OWA URL - read only property. Default value is `https://outlook.office365.com`

Archive Manager OWA Extension URL - the URL used to access OWA from the internet. If you use multiple URLs to access OWA, please use the one which is accessible to most of the users.

Archive Manager ExchangePamWS URL - URL for the ExchangePamWS service. This service is installed on the Archive Manager server.

Archive Manager Multi TenantWS URL - URL of the MultiTenantWS service. This service is installed on the Archive Manager server.

Microsoft Exchange Web service URL - read only property. Default value is `https://outlook.office365.com/EWS/Exchange.aspx`

6. Click **Next**. **Exchange Web Services Credentials** window fill in the credentials of the super-user which runs the Archive Manager services. It was specified during the installation of the Archive Manager.

For Exchange Server:

Setup wizard

Exchange Web Services Credentials

Please enter the superuser credentials. This user will be used to impersonate in Exchange Web Services.

Domain: democorp

User: domadmin

Password: *****

Confirm password: *****

< Back Next > Cancel

Enter the properties as described below:

- **Domain** - enter the domain name
- **User** - enter the username
- **Password** - enter the password
- **Confirm password** - confirm the password you entered

For Exchange Online:

Setup wizard

Exchange Web Services Credentials

Please enter the superuser credentials. This user will be used to impersonate in Exchange Web Services.

User:

Password:

Confirm password:

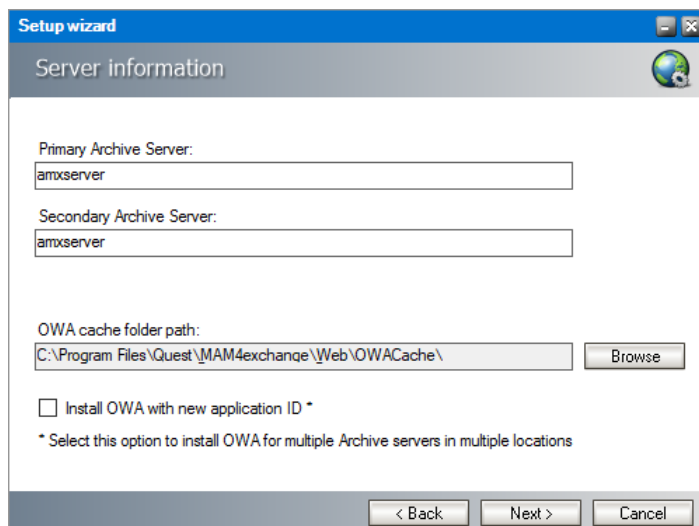
Endpoint type:

< Back Next > Cancel

Enter the properties as described below:

- **User** - enter the Microsoft 365 username
- **Password** - enter the password
- **Confirm password** - confirm the password you entered
- **Endpoint type** - Choose from one of the following endpoints:
 - Worldwide endpoints
 - U.S. Government DoD endpoints
 - U.S. Government GCC High endpoints
 - Microsoft 365 Germany endpoints

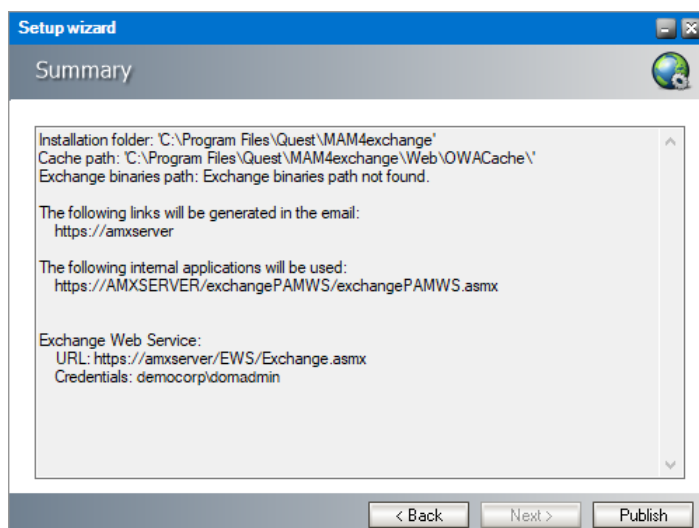
7. Click **Next**. The *Server Information* window opens.



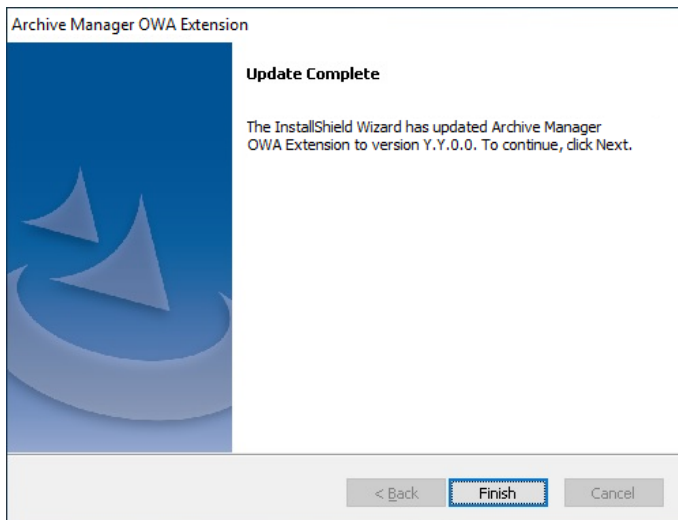
Enter the information as described below:

- **Primary Archive Server** - name of your Archive Manager *Archive* Server.
- **Secondary Archive Server** - name of your Archive Manager *Retrieve* Server. For a single-server deployment, the server name is the same as the **Primary Archive Server**. The secondary server will be used if the primary is not available.
- **OWA cache folder path** - By default, the cache folder is created under the **Web** folder. Use the **Browse** button to change the OWA cache path, if necessary.
- **Install OWA with new application ID** - select this option to install OWA for multiple Archive servers in multiple locations. The unique identifier ensures that the Archive servers can reliably detect the OWA extension in different locations.

8. Click **Next**. The *Summary* window opens.



9. Click **Publish**. The *Installation* window opens and the the upgrade progress is displayed. When the upgrade completes, the *Maintenance Complete* window opens.



10. Click **Finish** to close the configuration setup wizard.

PST Importer and Gatherer

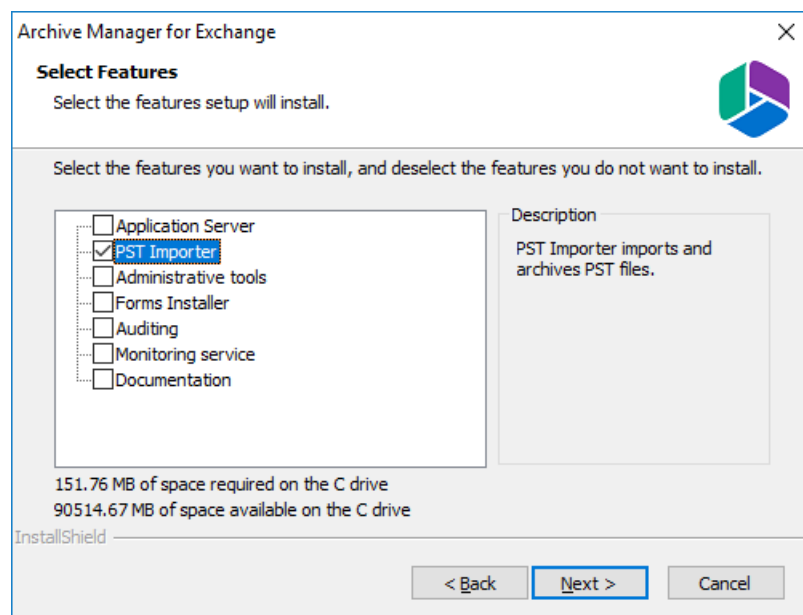
In this topic:

- [Upgrading PST importer](#)
- [Upgrading PST Gatherer](#)

Steps to upgrade PST importer

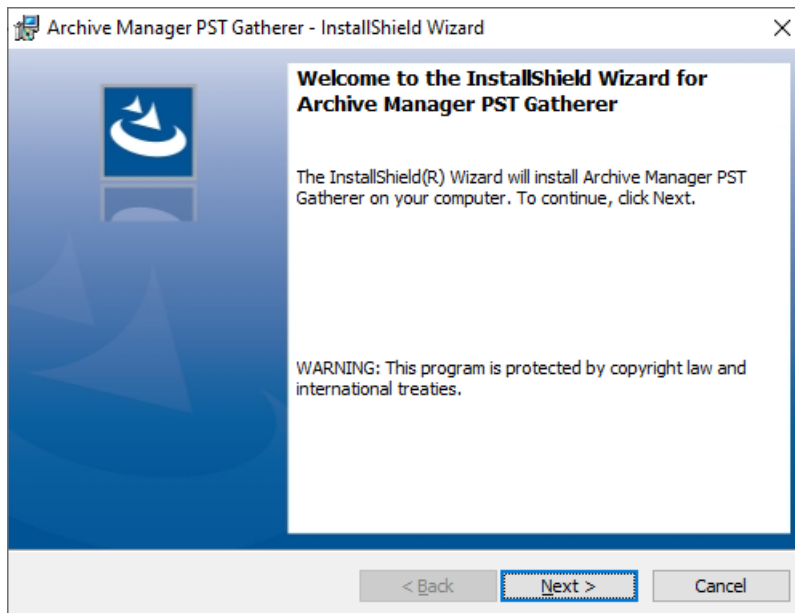
PST Importer is installed by default when you install Archive Manager for Exchange. If it has not been installed, see the *Archive Manager for Exchange Advanced Installation Guide*. Look for the topic *Install the Archive Server* in the *Advanced Installation* section.

When installing the Archive Manager for Exchange you will be prompted to select the individual features. In the *Select Features* window, select the **PST Importer** feature and proceed with the installation.

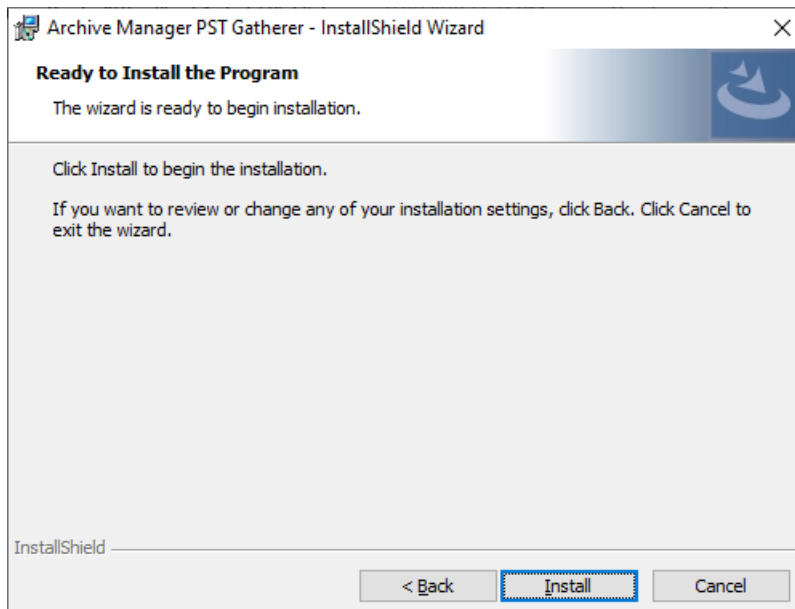


Steps to upgrade PST Gatherer

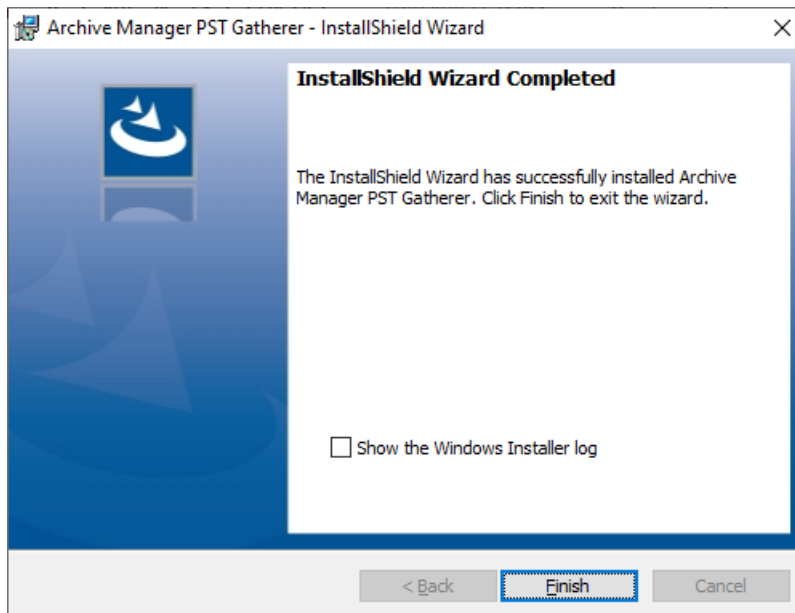
1. Run the installer. The default location is `C:\Quest\Archive Manager Installation Package\Exchange\PST Gatherer\Archive Manager PST Gatherer Setup.exe`



2. Click **Next**. The **Ready to Install the Program** window opens.



3. Click **Install**. When the install completes, the *InstallShield Wizard Complete* window opens.



4. Click **Finish** to complete the upgrade.

Search

You can automatically upgrade search using the Archive Manager installer. If you need to manually upgrade the search or post processing services, follow the steps described below.

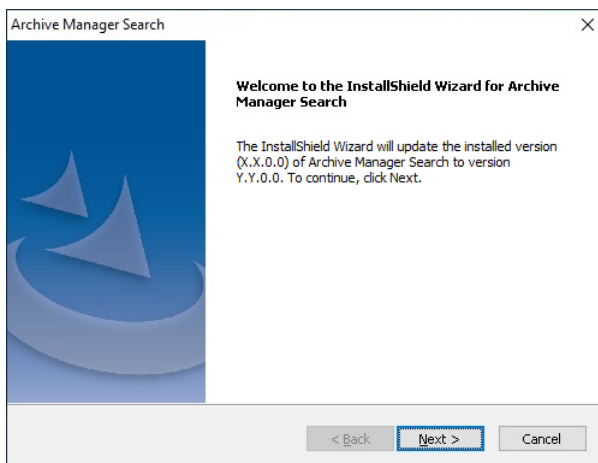
In this chapter:

- [Steps to manually upgrade with the Search installer](#)
- [Steps to manually upgrade the Search database](#)

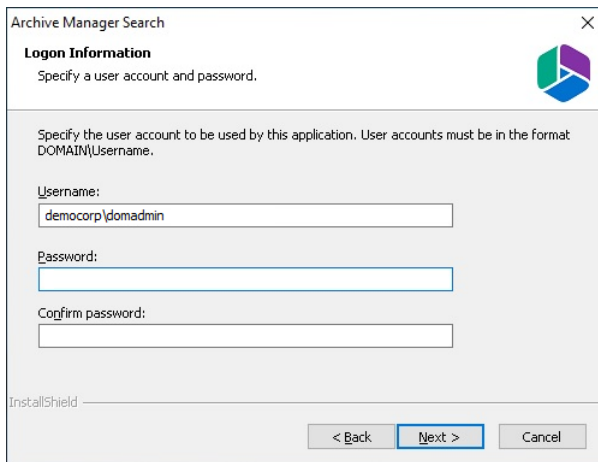
Steps to manually upgrade with the Search installer

1. Run the Archive Manager Search installer. the default location is `C:\Archive Manager Installation Package\Archive Manager Search\Archive Manager Search Setup.exe`. The *Welcome* window opens.

i | **NOTE:** A prerequisite check occurs and missing requirements if any are displayed. Install the prerequisites.



2. Click **Next**. The *Logon Information* window opens.



Archive Manager Search

Logon Information
Specify a user account and password.

Specify the user account to be used by this application. User accounts must be in the format DOMAIN\Username.

Username:
democorp\domadmin

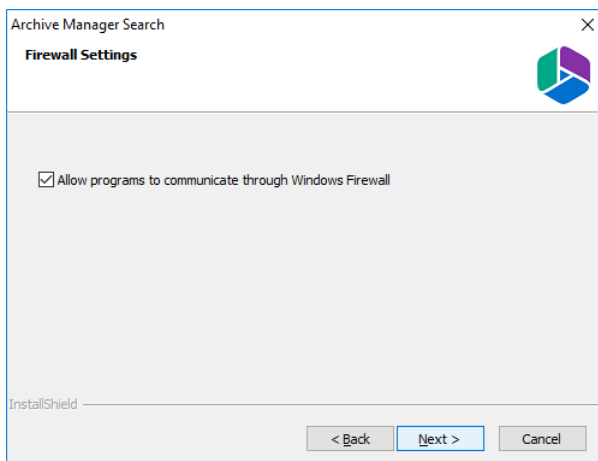
Password:
[Empty field]

Confirm password:
[Empty field]

InstallShield

< Back Next > Cancel

- Click **Next**. The *Firewall Settings* window opens. Select the check box to allow communications through server firewalls. By default, the **Allow programs to communicate through Windows Firewall** is checked. This will allow critical services to communicate with the SMTP service. If you clear the check box, critical services may not be able to communicate through the firewall.



Archive Manager Search

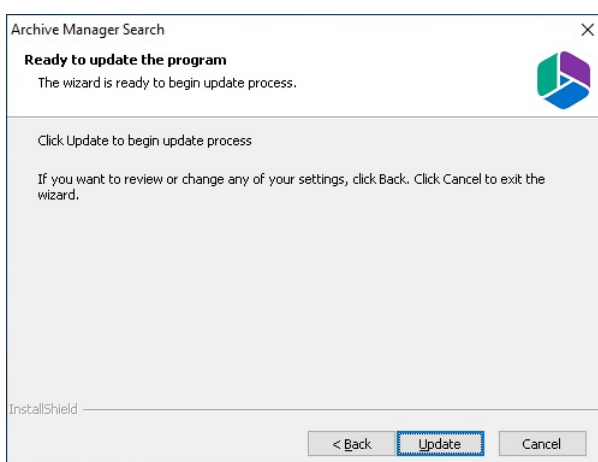
Firewall Settings

☒ Allow programs to communicate through Windows Firewall

InstallShield

< Back Next > Cancel

- Click **Next**. The *Ready to modify the program* window opens.



Archive Manager Search

Ready to update the program
The wizard is ready to begin update process.

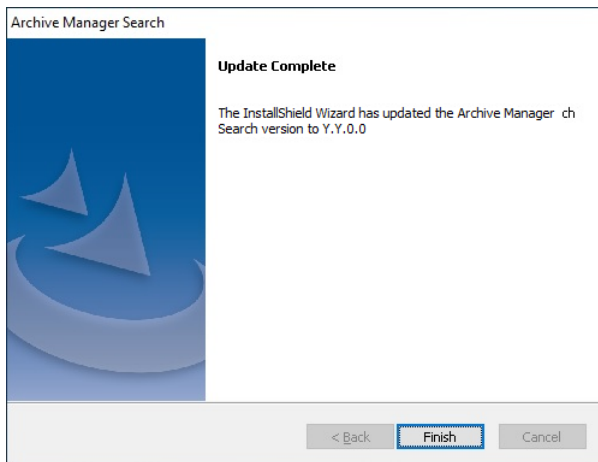
Click Update to begin update process

If you want to review or change any of your settings, click Back. Click Cancel to exit the wizard.

InstallShield

< Back Update Cancel

- Click **Update** to upgrade Search. If you want to review or change the wizard settings, click the **Back** button. To exit the wizard click **Cancel**. When the upgrade completes the *Update Complete* window opens.



6. Click **Finish**.

Steps to manually upgrade the Search database

If you choose this manual process and database scripts are upgraded, you must run the scripts manually from the *Archive Manager Configuration Tool* for two components: **Search** and **Post Processing**.

For Search

1. From the feature panel on the left in the *Archive Manager Configuration Tool*, click **Search** and select the **Database** tab.
2. Verify that the database connection information is as expected. Then click **Run Scripts**. The *Run Scripts* selection window opens.
3. Click **Select All** to select all check boxes. Click **Next**. The *View SQL scripts* window opens.
4. Click **Next**. The *Run Scripts* authentication window opens. Enter the information as described below:
 - a. **Authentication** - authentication type used for the database. Choose either **Windows authentication** or **SQL Server authentication**
 - a. **Database user** - database login username if *SQL Server authentication* is the selected as the authentication mode.
 - b. **Password** - password of the database user if *SQL Server authentication* is the selected as the authentication mode.
 - c. (optional) Check the **I want to review the SQL Scripts** check box to view the scripts.
5. Click **Next**. If you chose to view the SQL scripts then the *View SQL scripts* window opens. If you chose to view the Oracle scripts then the *View Oracle scripts* window opens.

Click **Save Script** to save the script as a script file to a folder. Check the **Word wrap** check box to display long lines as multiple lines of text.
6. Click **Next**. The *Run SQL scripts* window reopens with the scripts you have chosen to run.

7. Click **Next**. When the status changes to *Scripts were run successfully*, click **Finish** to close the script installer. The *Scripts* section of the **Database** tab displays the status and updated version of the scripts.

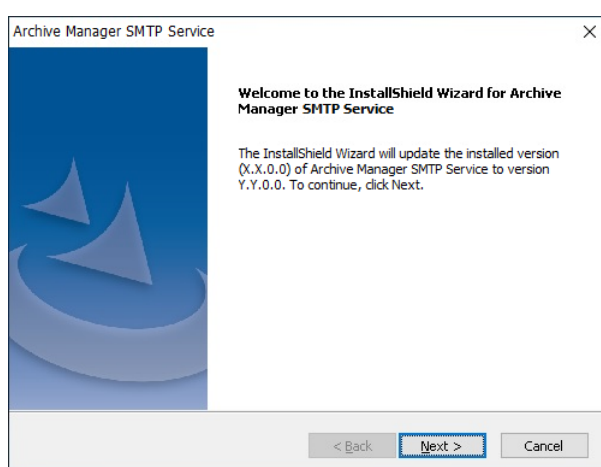
For Post Processing

1. From the feature panel on the left in the *Archive Manager Configuration Tool*, click **Post Processing** and select the **Database** tab.
2. Repeat steps 2 to 7 as described in the previous section.

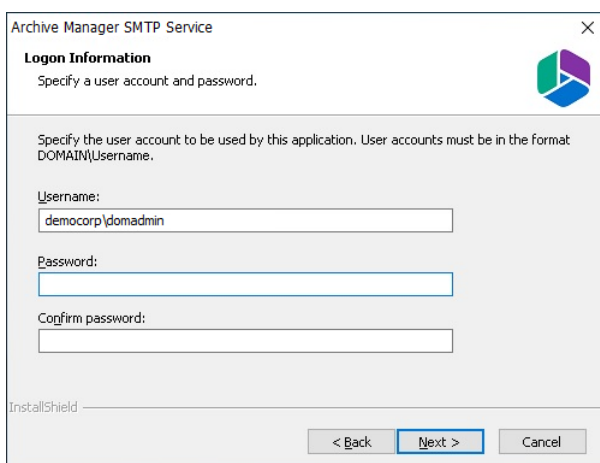
SMTP

Steps to upgrade

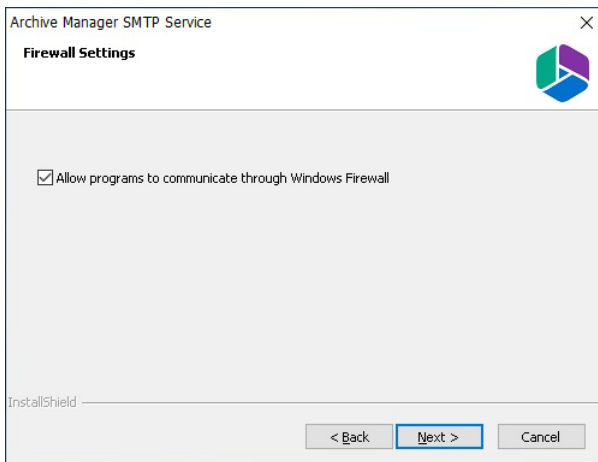
1. Run the installer. The default location is `C:\Quest\Archive Manager Installation Package\SMTP\Archive Manager SMTP Setup.exe`. The **Welcome** page of the Archive Manager SMTP Service opens.



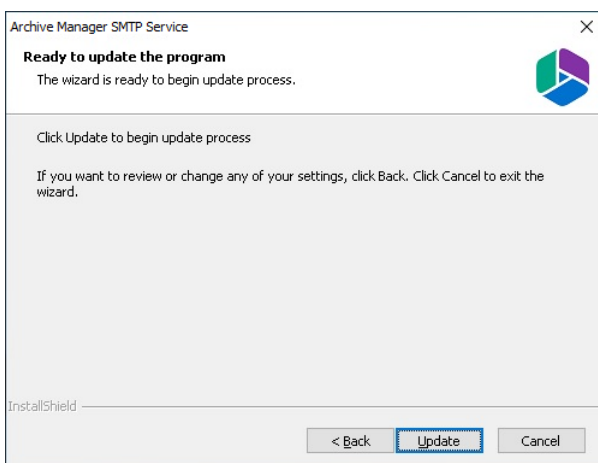
2. Click **Next**. The *Logon Information* window opens. Enter the account details of a user who is authorized to run the SMTP service. It is recommended to use the account information of the super-user that was used to install Archive Manager for Exchange.



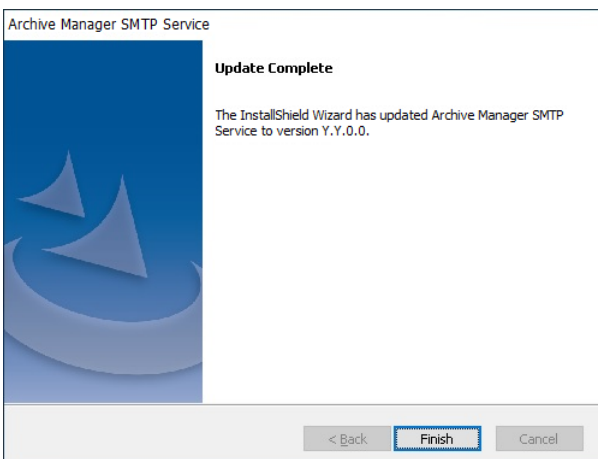
3. Click **Next**. The **Firewall Settings** window opens if the Windows Firewall is active on your computer. By default, the **Allow programs to communicate through Windows Firewall** is checked. This will allow critical services to communicate with the SMTP service. If you clear the check box, critical services may not be able to communicate through the firewall.



4. Click **Next**. The *Ready to update the program* window opens.



5. Click **Update** to begin the upgrade. If you want to review or change the wizard settings, click the **Back** button. To exit the wizard click **Cancel**. When the upgrade completes the *Update Complete* window opens.



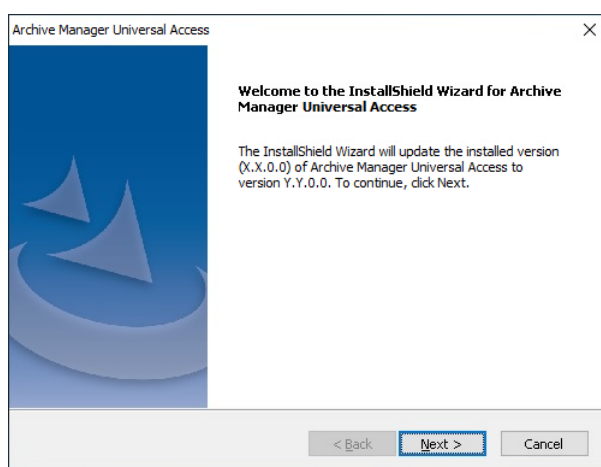
6. Click **Finish**

For more information about SMTP, see the *SMTP Guide*.

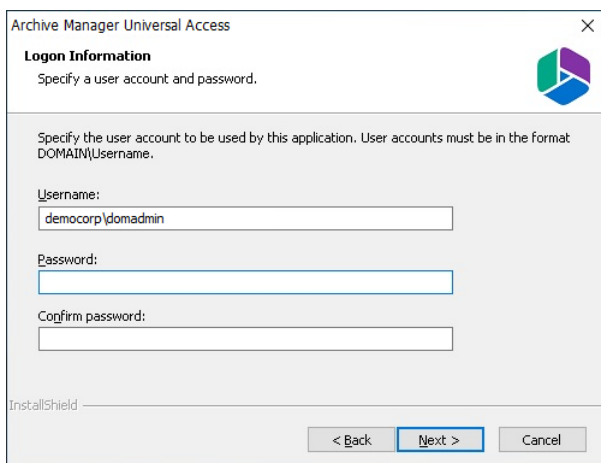
Universal Access

Steps to upgrade

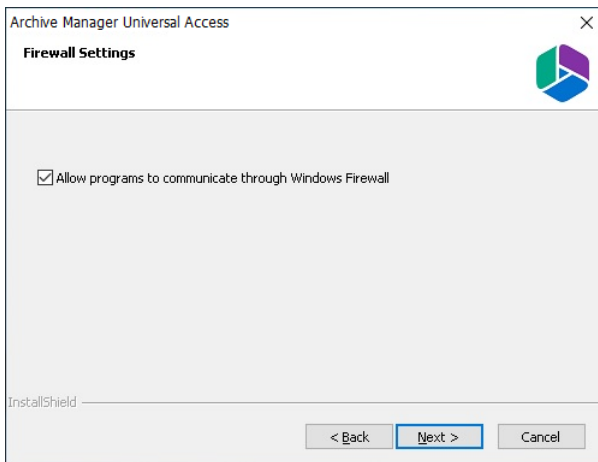
1. Run the installer. The default location is `C:\Quest\Archive Manager Installation Package\Universal Access\Archive Manager Universal Access Setup.exe`. The **Welcome** page of the Archive Manager Universal Access opens.



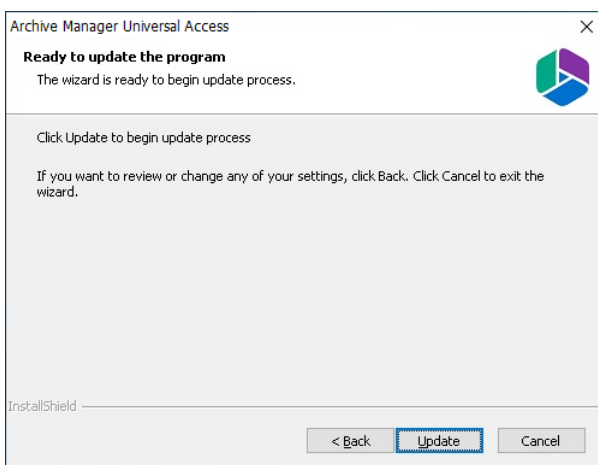
1. Click **Next**. The *Login Information* window opens. Enter the account details of a user who is authorized to run the Archive Manager Universal Access. It is recommended to use the account information of the super-user that was used to install Archive Manager for Exchange.



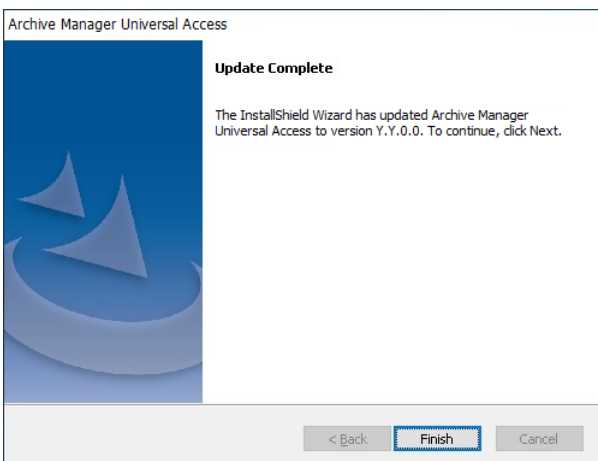
2. Click **Next**. The **Firewall Settings** window opens if the Windows Firewall is active on your computer. By default, the **Allow programs to communicate through Windows Firewall** is checked. This will allow critical services to communicate with the Archive Manager Universal Access. If you clear the check box, critical services may not be able to communicate through the firewall.



3. Click **Next**. The **Ready to Install the program** window opens.



4. Click **Update** to begin the upgrade. If you want to review or change the wizard settings, click the **Back** button. To exit the wizard click **Cancel**. When the upgrade completes the **Update Complete** window opens.



5. Click **Finish**.

For more information about Universal Access configuration see the *Universal Access Guide*.

About Us

Quest creates software solutions that make the benefits of new technology real in an increasingly complex IT landscape. From database and systems management, to Active Directory and Office 365 management, and cyber security resilience, Quest helps customers solve their next IT challenge now. Around the globe, more than 130,000 companies and 95% of the Fortune 500 count on Quest to deliver proactive management and monitoring for the next enterprise initiative, find the next solution for complex Microsoft challenges and stay ahead of the next threat. Quest Software. Where next meets now. For more information, visit www.quest.com.

Contacting Quest

For sales or other inquiries, visit www.quest.com/contact.

Technical Support Resources

Technical support is available to Quest customers with a valid maintenance contract and customers who have trial versions. You can access the Quest Support Portal at <https://support.quest.com>

The Support Portal provides self-help tools you can use to solve problems quickly and independently, 24 hours a day, 365 days a year. The Support Portal allows you to:

- Submit and manage a Service Request
- View Knowledge Base articles
- Sign up for product notifications
- Download software and technical documentation
- View how-to-videos
- Engage in community discussions
- Chat with support engineers online
- View services to assist you with your product