



erwin Evolve

Release Notes

© 2022 Quest Software Inc.

ALL RIGHTS RESERVED.

This guide contains proprietary information protected by copyright. The software described in this guide is furnished under a software license or nondisclosure agreement. This software may be used or copied only in accordance with the terms of the applicable agreement. No part of this guide may be reproduced or transmitted in any form or by any means, electronic or mechanical, including photocopying and recording for any purpose other than the purchaser's personal use without the written permission of Quest Software Inc.

The information in this document is provided in connection with Quest Software products. No license, express or implied, by estoppel or otherwise, to any intellectual property right is granted by this document or in connection with the sale of Quest Software products. EXCEPT AS SET FORTH IN THE TERMS AND CONDITIONS AS SPECIFIED IN THE LICENSE AGREEMENT FOR THIS PRODUCT, QUEST SOFTWARE ASSUMES NO LIABILITY WHATSOEVER AND DISCLAIMS ANY EXPRESS, IMPLIED OR STATUTORY WARRANTY RELATING TO ITS PRODUCTS INCLUDING, BUT NOT LIMITED TO, THE IMPLIED WARRANTY OF MERCHANTABILITY, FITNESS FOR A PARTICULAR PURPOSE, OR NON-INFRINGEMENT. IN NO EVENT SHALL QUEST SOFTWARE BE LIABLE FOR ANY DIRECT, INDIRECT, CONSEQUENTIAL, PUNITIVE, SPECIAL OR INCIDENTAL DAMAGES (INCLUDING, WITHOUT LIMITATION, DAMAGES FOR LOSS OF PROFITS, BUSINESS INTERRUPTION OR LOSS OF INFORMATION) ARISING OUT OF THE USE OR INABILITY TO USE THIS DOCUMENT, EVEN IF QUEST SOFTWARE HAS BEEN ADVISED OF THE POSSIBILITY OF SUCH DAMAGES. Quest Software makes no representations or warranties with respect to the accuracy or completeness of the contents of this document and reserves the right to make changes to specifications and product descriptions at any time without notice. Quest Software does not make any commitment to update the information contained in this document.

If you have any questions regarding your potential use of this material, contact:

Quest Software Inc.

Attn: LEGAL Dept

4 Polaris Way

Aliso Viejo, CA 92656

Refer to our Web site (<https://www.quest.com>) for regional and international office information.

Patents

Quest Software is proud of our advanced technology. Patents and pending patents may apply to this product. For the most current information about applicable patents for this product, please visit our website at <https://www.quest.com/legal>.

Trademarks

Quest, the Quest logo, and Join the Innovation are trademarks and registered trademarks of Quest Software Inc. For a complete list of Quest marks, visit <https://www.quest.com/legal/trademark-information.aspx>. All other trademarks and registered trademarks are property of their respective owners.

erwin Evolve – Release Notes

Updated – April 2022

Version – 2020.2.1.1

What's New in erwin Evolve 2020.2

erwin Evolve 2020.2 is the latest release of the erwin Evolve Suite and Erwin Evolve Web Platform.

Major Release 2020.2

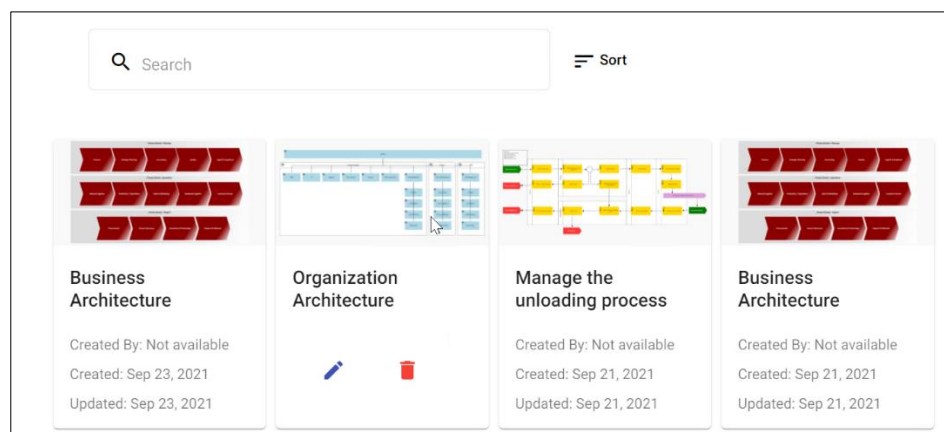
Following the positive reception of Web Modeler in Evolve 2020.1, this release brings new key features and some significant enhancements, including; a new UI for the Diagram Manager, improved Draft Management, automatic diagram template synchronization and in-place editing of shapes.

In addition to these welcome improvements, there have been some significant enhancements to erwin Evolve.

Features and Fixes of release 2020.2.0:

Web Modeler:

- **Key Feature:** Improved draft management user experience on the Web modeler home page
 - More useful information on the thumbnail, with additional details on the preview (e.g., Created By, Creation Date, Updated Date).
 - Switch between Name and Title view.
 - Floating buttons on the preview panels to reduce wasted space.
 - Large preview on clicking on the thumbnail.
 - Search and sort by name or by title, and additional sort by date modified.



- Filters to reduce the list to a more manageable number of panels
 - Filter by Diagram Type and Diagram Creator
 - Also filter using a 'From Date', a 'To Date' or Between Dates

The screenshot shows a 'Filters' panel with a 'Reset' button in the top right. Below the title are three filter sections: 'Diagram Type' with a dropdown arrow, 'Creator' with a text input field, and 'Modified Date' with a text input field and a calendar icon.

- **Key Feature:** A new UI to create a draft diagram from the diagram manager in Web Modeler.
 - Easy selection of the diagram type, with helpful type-based images and a search box.
 - Name can be chosen prior to creating the draft.

The screenshot shows the 'Diagram Types' selection interface. At the top is a 'Name' input field. Below it is a search bar containing the text 'Template'. A grid displays four diagram templates, each with a title and a visual icon: 'Template : Process - Level 1', 'Level 2', 'Level 3', and 'Level 4'. At the bottom right, there are 'CANCEL' and 'CREATE' buttons.

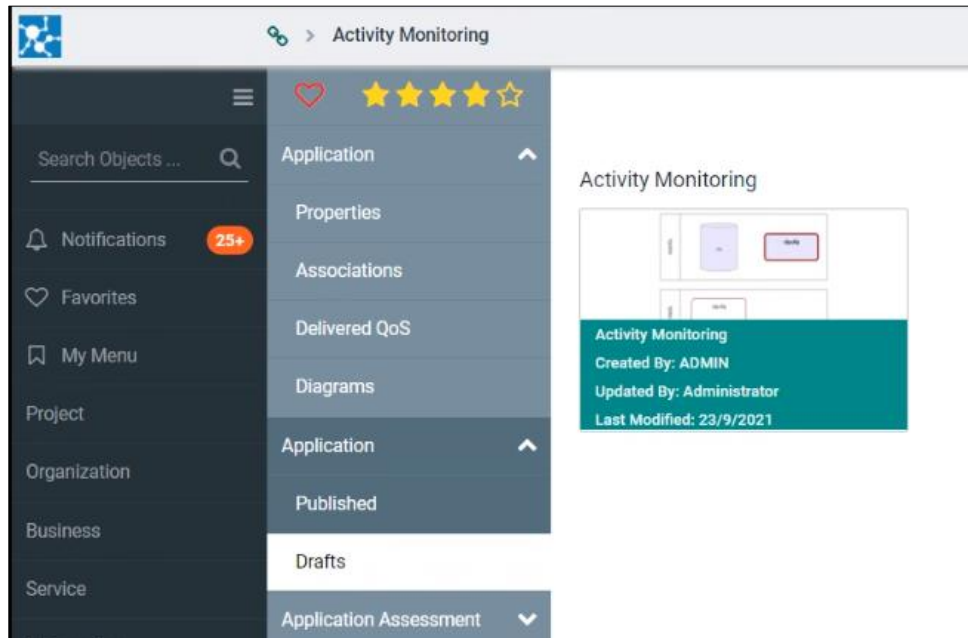
- **Key feature:** Diagram Template Synchronization
 - No need to re-publish your site or use the template synchronizer each time a diagram template is changed. They now sync automatically, and new templates are available immediately.
- **Key Feature:** Association names are now displayed on association links (NB: Regions on lines are not yet supported)

- Other Web Modeler improvements:

- Move shapes using the cursor keys. Select a shape, and use the arrow keys to move it up, down, left, and right in steps. Using CTRL + Cursor key will move it pixel by pixel for fine control. Use of the arrow keys without a selected shape will move the diagram view, as before.
- In-place editing of shapes – use a second click on a shape to allow the naming of the shape directly within the shape. This incorporates global search to find existing objects, during in-place edit.
- Warning now given if user tries to change styles on shapes that have style controlled by regions. Helps the user understand why a change they make, has no impact.
- Undo / Redo is now featured on the toolbar and supports restore of objects as well as shapes, in a more intuitive way.
- Warning now given if the user dismisses their changes (or changes selection) on the right-hand panel. The option to save the changes is offered in a simple dialog.
- Title shape and Version Control shape now available on the palette, and the Version Control includes the ability to switch on and off the desired fields in the block.

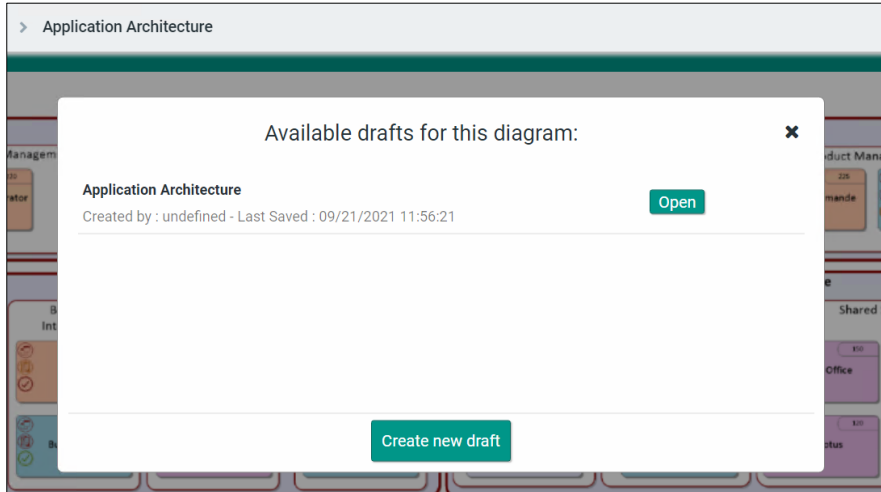
Other Evolve enhancements:

- **Key Feature:** Draft management in evolve now has added details on draft tiles
 - Including Created By, Updated By, Created Date, Updated Date.



- **Key Feature:** Draft preview now available on Draft Management pages in Evolve. Just click on the image in the panel for a larger preview.

- **Key Feature:** When creating a draft diagram from a published diagram, Evolve will now ask if you wish to use a previously created draft for this published diagram, if one (or more) exist.



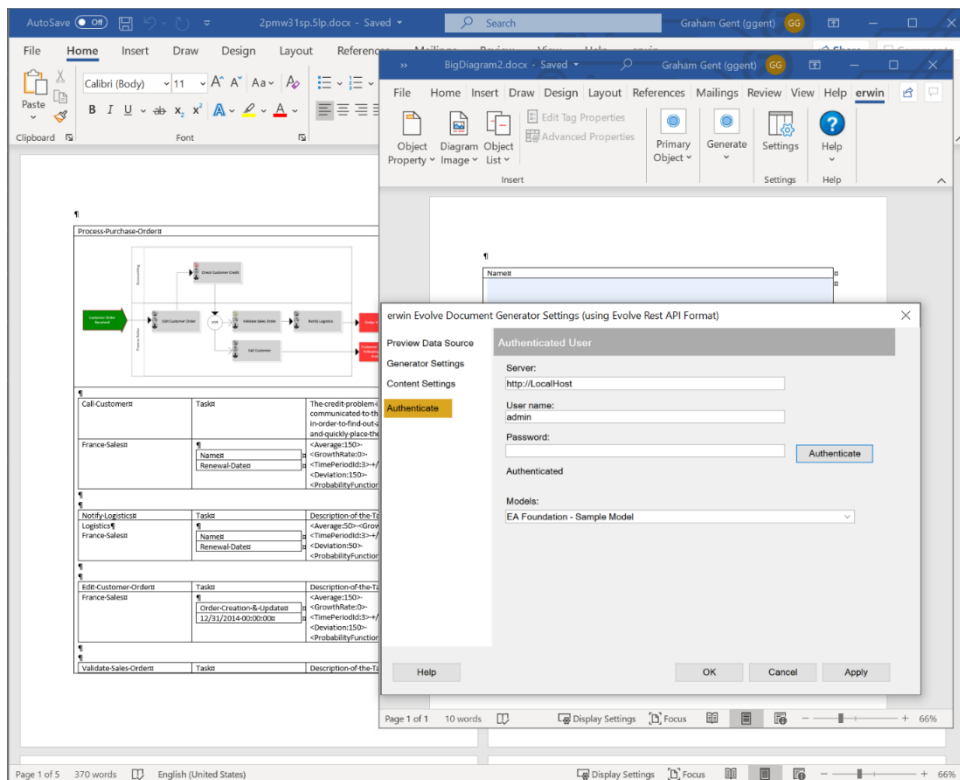
- Notification for diagram draft creation from Evolve now includes a hyperlink, to get you to the draft diagram.

Word Reporting (Document Generator):

This release brings a major re-architecture for our Word reporting solution (Document Generator). As we have moved more to the Web Platform, it felt time that our long-standing reporting solution was brought along too. In order to achieve this, extensive new REST APIs have been added to the product. to enable the Microsoft Word based plugin, to communicate live to the Evolve Web Platform. This means that it is no longer necessary to run XML exports from the desktop tool to design reports in Word, and more significantly, it is no longer necessary to generate XML to produce a report.

The new solution offers a login to the Evolve REST API (simple authentication only at present) and will dynamically acquire the meta model and content to allow report design without the complexity of XML files. Once your report is designed, a press of the generate button will fetch only the data needed to produce the report, and the report will be displayed as it always has been.

Batch mode has not been forgotten in this upgrade. It is also possible to batch generate reports using this new technology, again simplifying the process, and reducing the data load time and stress on the database server.



Security and Maintenance:

- Many third-party components updated to improve security, including:
 - Update to .NET Framework 4.8

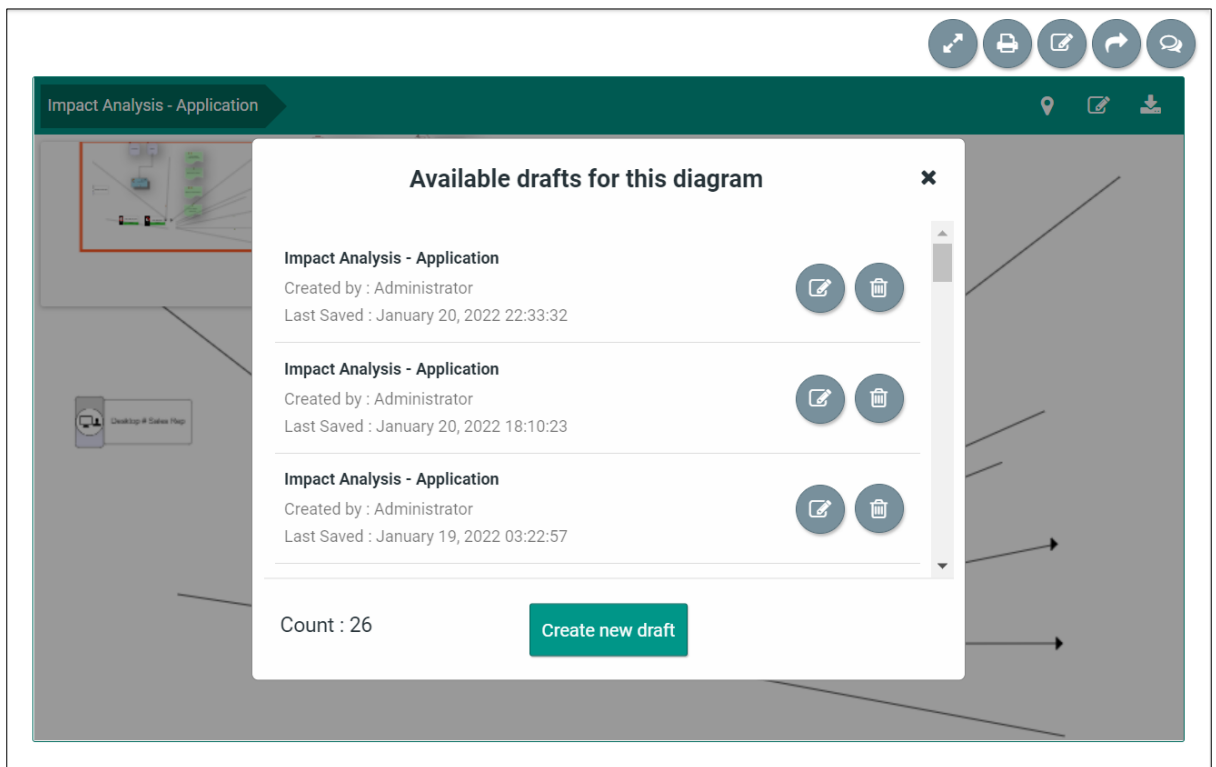
Extended Service Release 2020.2.1

What is new in this release?

erwin Evolve 2020.2.1 is the new release that comes with significant enhancements and updates including an effortless auto display of associations between the shapes, a new button to place the missing associations, new UI in the draft manager page. And a lot more improvements and fixes for a much better experience.

Evolve Web Platform

- Evolve site updates improved. It is now possible to publish an Evolve site while in use, without side effects. This means new objects and properties added to the meta model will take effect immediately without the need to recycle the Evolve web application. This provides a more seamless experience for your end users.
- Able to delete draft diagrams from the draft selection dialog in Evolve



- Evolve REST/API improvements for Document Generator Live
- Global Search in the Web Platform has been upgraded to use the latest version of Elastic Search, taking advantage of the most recent security updates, particularly around Log4J.



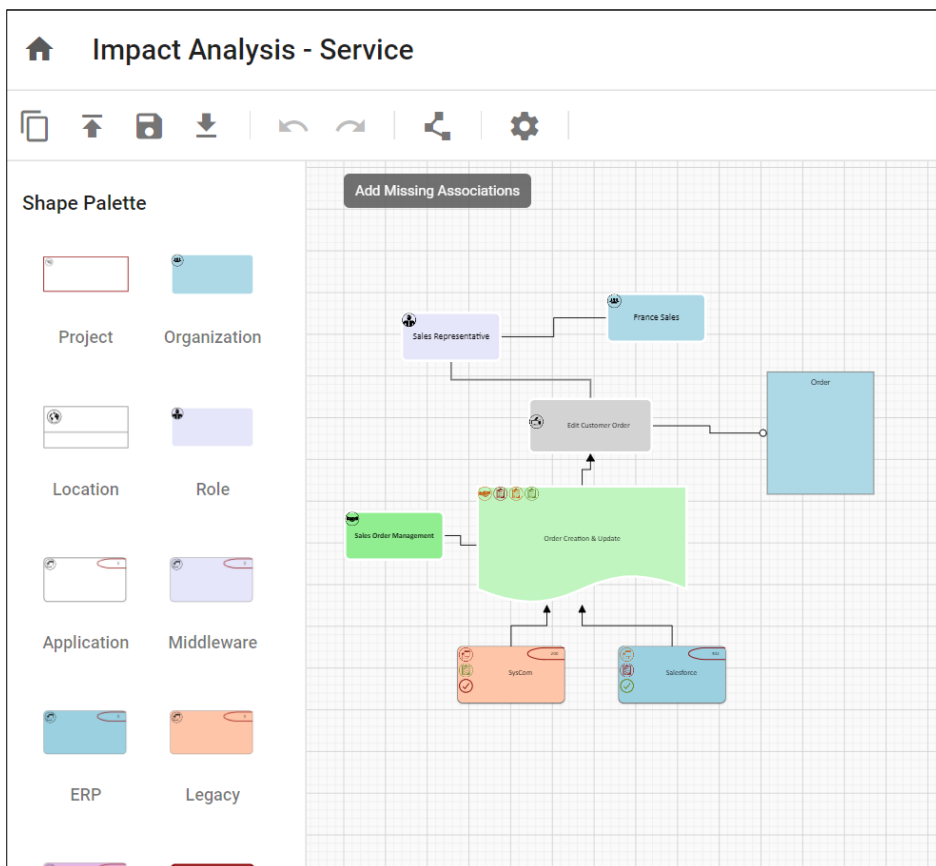
Due to changes in the Elastic database, a reindex of Global Search is required.



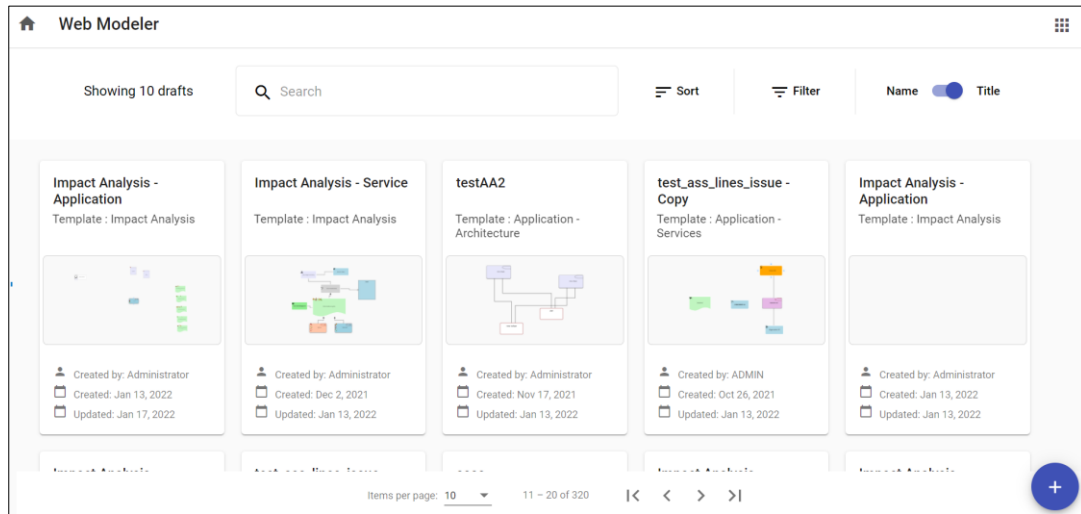
NB: In some systems the memory usage for Elastic Search can be higher than the previous version. If this is an issue it can be adjusted by performing some simple settings changes in the JAVA options file. See Troubleshooting in the Evolve Web Platform documentation

Web Modeler

- Automatic display of associations when existing objects are added to a diagram
- New button to add missing association to diagrams



- Draft Manager now has better filtering and pagination



Evolve Suite

- Added support to Validate Repository to fix issues with Global Search Data. Now able to correct missing items or remove ghost items.



Evolve Web Platform and Evolve Suite must be installed on the same machine

Licensing

- Added support for Quest licensing (note that Casewise licenses will still work in this release). This will be the final release that Casewise licenses will function. New licenses will be issued with the 2022.0.0 release later in the year.

Security

- Updated many components to ensure Evolve is up to date on security patches

List of Enhancements and Fixes

2020.2.1.1 Patch Release (337/446)	
RFA / Issue	Description
BUG	[9861905] Fixed issue with .NET 4.8 upgrade in Evolve Designer, causing excessive resource usage
BUG	[9860952] Quest Licensing - Updated license mappings
Enhancement	[9861252] Quest Licensing - Display the Quest License ID in License Manager
BUG	[9861164] Fixed Validate Repository being case sensitive on model name. Case now ignored.
BUG	[9860911] Fixed Global Search settings, now Elastic Search is not so memory hungry
BUG	[9860912] Fixed an issue where Global Search could start before Elastic Search was ready and cause an unnecessary reindex.
2020.2.1 Service Release (329/455)	
RFA / Issue	Description
Enhancement	[Evolve Web] – Now displays the date a static page was last rendered, to help understand how accurate the data might be
Enhancement	[Evolve Web/Web Modeler] – Improved display of draft diagram cards in both Evolve and Web Modeler
BUG	[Web Modeler] - Region for Macro process object in Hierarchy template is now displayed in web modeler.
BUG	[Web Modeler] - Fixed an issue where the z-order could be incorrect for association lines

Enhancement	[Evolve] - Able to delete draft diagrams from the draft selection dialog in Evolve
BUG	[Web Modeler] - Fixed an issue where Title and Version control shapes could block editing of draft diagram
BUG	[Web Modeler] - Fix publish diagram issue on Conceptual Data Model template
Enhancement	[Web Modeler] - Add missing associations to a diagram on demand
Enhancement	[Web Modeler] - Add missing associations to a diagram when existing shapes added to a diagram
BUG	[Web Modeler] - Drafts popup now displays correctly
Enhancement	[Evolve] - Live update of Evolve site is now more seamless
General	Updated Software Transaction Agreement [STA]
Enhancement	[Evolve Designer] - No longer need to manually press button to encrypt passwords
Enhancement	[Diagram Draft Manager] - Now using thumbnail images in Evolve and Web Modeler, to improve performance
BUG	[Workflow] - Task history now shows all items, even if multiple tasks made by the same user.
Enhancement	[Web Modeler and Evolve] - Various styling changes to improve user experience.
General	Replace Elasticsearch 6.4.0 with the current latest 7.16.2 to mitigate risks with Log4J – Note: This requires a reindex of global search
Enhancement	[Web Modeler] - Draft Manager now improved with pagination support

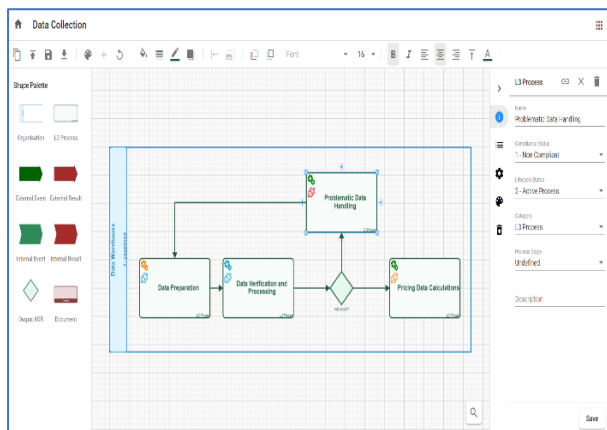
Enhancement	[Web Modeler] - Draft Manager filters are now saved with the user profile
Enhancement	[Web Modeler] - Now displays rich text (enhanced/html) properties in the popout. Note: They are <u>not</u> editable.
2020.2.0 Major Release (254/435)	
RFA / Issue	Description
BUG	[Web Modeler] [6961911] – Shape previews on tool palette now vanish correctly
BUG	[Web Modeler] [9849187, 9849196] –Title now displays better inside tiles when the title is long
BUG	[Web Modeler] [8046669] – Better error message when user has insufficient rights to create a diagram
BUG	[Web Modeler] [9851120] – Object properties correctly filled in some specific cases
BUG	[Web Modeler] [9851121] - Object names are now selectable when the category matches
BUG	[Global Search] [9851287] – Handling of text containing < > braces in a Description, now consistent with plain text
BUG	[Global Search] - Model names with trailing spaces issue, now fixed
BUG	[8571292] Cache selection now correctly defaults to Off
BUG	[4268070/1] Server-side Jump and Merge now correctly sorts forwards and backwards
BUG	[Web Modeler] [9849086] – Duplicating a diagram now has the correct diagram name
BUG	[Global Search] [9848072] – now allows < > braces in the search

BUG	[Global Search] [9850746] – No longer stalls when the audit has large gaps in history
BUG	[Global Search] [9850744] – Correctly removes all traces of a model when the model is deleted
BUG	[Global Search] [9852247] – Some deleted items were remaining in the search indexes, now fixed
BUG	[4089753] Pie chart now shows the number separator (comma or space) correctly
BUG	[6695574] Dates of 12/30/1899 now correctly display as blank
BUG	[4057176] Removing a site from Evolve, now correctly cleans up the site file
BUG	[9155754] IN filter now works correctly for integer-based values
BUG	[9849197] Breadcrumbs now display correctly when the text becomes too long to fit
BUG	[9852465] Evolve designer no longer gets stuck on invalid IN operators when designing a filter
BUG	[9852552] When using SAML2 an App Pool recycle no longer causes authentication to get stuck. User no longer gets an empty response, instead asked to click, to re-authenticate. (AKA – Timeout issue)
BUG	[9854655 / SR4928946] Switching the sanitizer off (not recommended) no longer causes Social Comments fail to save.
BUG	[9849195] Fixed an issue where Web Modeler appears to 'go to sleep'. If left, Evolve would be shut down by IIS, and on restarting would be unresponsive in Web Modeler for up to 3-5 mins, before operating correctly

BUG	[9858893] Evolve no longer fails to complete the site generation if a single auto-diagram fails to generate. It will continue, and report the failed diagram
BUG	Several incorrectly reported error messages are now removed from the log output to improve clarity of the reports

Major Release 2020.1

Following the successful introduction of Web Modeler, this 2020.1 release brings significant enhancements, including a high level of support for Shape Regions, Object and Association support offering clear & delete, and box-in-box support that can now create associations on publishing. This makes diagramming on the web a whole lot more capable.



Web Modeler goes next level:

- See Shape Regions live in Web Modeler.
- Clear and Delete support for Objects and Associations.
- Preview the Items that will be deleted on publishing
- Containment associations created when publishing.
- Pictures supported for Palette templates.
- Many other minor tweaks and enhancements.

As well as significant improvements to Web Modeler, erwin Evolve 2020.1 introduces two new products:

- **New product: erwin Evolve Analytics Accelerator 2**

Completely re-imagined from the ground up, Analytics Accelerator brings LIVE BI reporting to your models.

No need to wait for that overnight batch job, your Analytics are continually refreshed, and there is more...

Not only can you run BI reports on the most up to date data, but you are now able to report on the history of your models too.

Queries like, 'show me all the objects that changed in the last 3 months, who made the changes, and what were they' are easily within your grasp, using whichever* BI reporting tool you choose to use.

- **New product: erwin DM data import 2**

Two years ago we brought data model import from erwin DM to Evolve, now we introduce the next generation of DM importing. Faster, more automated, and with better support for Evolve Web Platform. You can now keep your data models up to date in Evolve, and associate this with your Processes and Applications from the Web.

erwin Evolve 2020.1 also brings the following enhancements:

- **New Simple Grid View (evolve View)**

A new table type has been added that can be used in place of the Simple Table, which not only supports Server-side Jump and Merge, but also offers filtering and sorting for the end user.

- **erwin Evolve Web Platform Security Update**

In keeping with the expected security of our platform, we bring the necessary updates and provide certification from our third-party testing team.

- **Less nagging when using temporary licenses**

Our temporary licenses now nag only when there are 15 days left on the clock. This removes the annoyance of clicking a warning on starting our applications, when the license has months to run.

- **Log messages are now much less busy**

Logging, now has a much tidier output when choosing the different levels. Most notably 'Info' is available, to provide all your analytics-based logs, but saving you from the 'Debug' level of detail. It is now much easier to see the wood for the trees, and the log files will not grow so fast. 'Debug' is still available, for when you really need it.

** BI tool must support SQL Server as a data source.*

Extended Service Release 2020.1.1

Following the successful introduction of Web Modeler, this 2020.1.1 release brings significant enhancements with Undo/Redo in Web Modeler, a much faster Global search, improvements in the Analytic Accelerator Service along with enhancements to XML Import and Communicator for Word (C4W) to make the tool more capable.

- **Undo / Redo in Web Modeler**

Now able to Undo and Redo changes to shapes and object values in the Web Modeler using CTRL+Z and CTRL+SHIFT+Z.

- **Global Search with a higher rate of indexing**

Global Search is now much faster at indexing large amounts of changed data.

- **Improvements in the Analytic Accelerator Service**

It can now optionally show names or the script names of the objects, which makes queries more convenient.

The table that contains the changes made to each object now shows the current value in addition to the previous value. Previously the current value had to be obtained from the object's table. This change again makes querying data simpler, with less need for complex joins.

- **XML Import**

Option to import associations by type, source, and target instead of GUIDs. This ensures associations will get updated if necessary rather than duplicated.

[See here for more details.](#)

- **Communicator for Word Filtering (C4W)**

Now has the ability to filter based on property values to produce reduce sized XML files.

[See here for more details.](#)

- **Evolve static page client-side caching**

Improved the performance of both static sites, and some static areas of dynamic sites, by intelligently caching content on the client browser as needed.

- **Fixes to stability and useability of Web Modeler**

- **And many bug fixes and tweaks to ensure the user experience**

Note: Service Release 2020.1.1 includes a recent version of MongoDB, however, this is not the latest version. Due to unforeseen issues, the latest version would not package correctly into our installer.



If you would like to use the latest version, which may include additional fixes and security updates, this is possible.

To install the new Mongo database, you must first uninstall the version packaged by our installer. To remove, use Add and Remove Programs, find MongoDB and uninstall. Then download the latest version from the MongoDB website, currently 4.4.5

<https://www.mongodb.com/try/download/community>

Install this newer version to the default location and continue to use Evolve as usual.



Note: Previous Release 2020.0.2 introduced some significant changes to file structure in the static website to facilitate authentication on a static site. If you are using scripts to migrate content from one server to another, please visit the [help here](#), which will explain the new structure.



Note: Previous Release 2020.0.2 no longer relies on IIS alone for the operation of a static site. This improvement to security, now requires the evolve engine to be active prior to a site being available for use. The result will be a slight delay to a static site being loaded, if the web server is asleep. This will only affect the first user to a site, if evolve is asleep, and it will force evolve to start. The delay will be comparable to that of the dynamic site..

Watch our dedicated erwin Evolve YouTube channel for more information about this exciting release.



Full list of enhancements and fixes

2020.1.1 Build (248/421)	
RFA / Issue	Description
BUG	[Web Modeler] – 9851121, 9851120 – Searches for some pre-existing objects with Categories may not find a result due to care sensitivity
2020.1.1 Build (248/420)	
RFA / Issue	Description
BUG	[Global Search] - Database service gets stuck fetching next block of records when the block is empty (Block size 20,000)
BUG	[Global Search] - Any Replaced model fails to index the pre-existing Global Search data
BUG	[Global Search] – Fails to index when Audit table contain records related to models that no longer exist
BUG	[Global Search] - Unable to search on certain text phrases in a specific model when a record contains more than one property with the same script name
BUG	[DB Schema] – CasewiseRW role missing access to new Global Search tables
BUG	[Model Delete] – Model delete can leave orphaned audit history behind
2020.1.1 Build (229/418)	
RFA / Issue	Description
BUG	[Suite] [ZT121967] - Fixed an issue where changing properties and closing an edit dialog quickly may cause HTML memo text to be lost

Performance	[Suite] - Changed the way Global Search indexes data, to be able to cope with large volumes of data change more efficiently
BUG	[Suite] [C4W] [ZT120964] - Fixed an issue that caused settings to be lost in CMXML
BUG	[Suite] [C4W] [ZT120982] - Fixed an issue where user-defined objects would not be filtered correctly when fetching using CMXML
BUG	[Suite] [C4W] [ZT120982] - Fixed issues with date filtering in CMXML
BUG	[Suite] - Fixed an issue where deleting a model left some traces behind, preventing the reloading of a model with the same model filename (nb: restarting the tool is required to allow the reloading of a model with the same filename)
Performance	[Suite] - Deleting a model is now significantly faster
ENH	[Suite] [ZT106343] - Added an option when using XML import to update associations that match on type, from the object and to object, but have differing GUIDs. This allows data to be merged from different sources, without causing duplicate associations. Option is called 'Map association to existing source and target object'
Performance/ BUG	[Suite] [ZT129527] - Removed superfluous attempts to delete memo data from several object types. This also contributes to fix a database deadlock in certain conditions
BUG	[Evolve Web] - Fixed an issue where Global Search might miss out indexing records due to file ordering inconsistencies. This would lead to missing search results
BUG	[Web Modeler] [8405034] - Fix incorrect dates being shown on date gauges
BUG	[Web Modeler] [8447336] - Fixed margin on images, to enable the closer match to word wrapping on Evolve Desktop
BUG	[Web Modeler] [8447365] - Fixed update date on Web Modeler diagrams

BUG	[Web Modeler] [8678637] - Fix issue with broken links and draft creation
BUG	[Web Modeler] [8720150] - Fix palette value for boolean property regions
BUG/ENH	[Evolve Web] - Added the creation of the site JSON for static site publishing and made the site be updated on a save and deploy as well. This allows changes to AD/SAML2 groups to take effect without a full publish
BUG	[Evolve Web] - Fix for dynamic sites which serve static content. Static content on dynamic sites now pulls from the generated static site correctly. Regenerated pages are put in the live/generated folder. So, the static site is no longer affected by dynamic users
BUG	[Evolve Web] - Fixed Secondary server access to static sites
BUG	[Web Modeler] [8781955] - Fix bug where conditional regions with decimals may not work as intended
BUG	[Evolve Web] [8591889] - Improved date handling in advanced Global Search
BUG	[Web Modeler] [9072240] - Fix bug where conditional regions with dates may not work as intended
ENH	[Web Modeler] [8802595] - Added Contains, Does Not Contain and Default operators to region support
BUG	[Evolve Web] - Fixed client-side caching of Metamodel and Access Rights responses
BUG	[Web Modeler] [ZT130998/ZT118281][9072243] - Add ability to save blank dates on object pages
BUG	[Diagram Designer] [ZT125691/ZT49618] - Some diagrams not rendered during a static publish. This may also fix some automatic diagram failures in a dynamic site

ENH	[Web Modeler] [9197435] - Added support for Gradient Fills
BUG	[Web Modeler] [ZT122489] - Web Modeler now indicates mandatory fields that are missing, in the todo list
BUG	[Evolve Diagrams] [ZT119903] - Diagrams with < > in the name of the shape won't load in Evolve
BUG	[Evolve Web] - Fixed client-side caching for static file content. This will improve the performance of both static sites, and some static areas of dynamic sites, by intelligently caching content on the client browser as needed
BUG	[Evolve Web] [ZT124967] - Comments on pages now support special characters
BUG	<p>[Evolve Web] - Fix for Static Authentication, where it would create a Normal user with full model access.</p> <p>Now, if a user is set up for static authentication on one site and is a dynamic User on a separate site, then they will have a CM-User created for them, with access to both models. This fix ensures the static site is only accessible with read-only access</p>
ENH	[Web Modeler] [9805858] - Added the ability to duplicate a published diagram as a new draft diagram. When the new draft diagram is published, it will publish to a new diagram (not replace the existing one)
2020.1.0 Initial Build (181/356)	
RFA / Issue	Description
BUG	[Web Designer] [ZT111909] - Deletion of metadata being used by evolve no longer breaks Evolve Designer
BUG	[Web Modeler] Selecting an unsupported shape in Web Modeler causes diagramming to break

BUG	[Web Modeler] Accented characters now supported in web modeler's Object Name Search
BUG	[Web Modeler] Swimlane diagrams can now be edited if they contain pictures
BUG	[Web] [ZT113258] Diagram text justification now correct on vector diagrams that use default styles
BUG	[Web Modeler] Duplicate draft diagram now correctly uses the user diagram settings (eg show grid)
BUG	[Web Modeler] Integer properties correctly follow model validation
BUG	[Auth] ZT115258 SAML2 (SP initiated) now working correctly
BUG	[Web Modeler] [ZT114045] Web Modeler can now create same-name / different category diagrams
ENH	[Web] Evolve logging tidied and follows DEBUG/INFO/WARN/ERROR leveling more sensibly
ENH	[Suite] [Licensing] No-nags for CW temporary licensing licence - [ZT114792]
BUG	[Web Modeler] [ZT114044] Can now open diagrams when only a Version Control box exists
BUG	[Web] Object revision history now stays set to previous setting during an upgrade
BUG	[Web] [ZT113666] CW_USER record is again created for users logging in with CW Logon
BUG	[Web Modeler] [ZT112842] Deleted templates are now correctly removed when templates are published

BUG	[Evolve] [ZT113622] Custom Association Regions are now hidden correctly
BUG	[Suite] Count regions will not display correctly with association type
BUG	[Suite] Custom regions no longer show an error when set to 'show when exists'
ENH	[Web Modeler] Now supports the ability to clear or delete and shape/object from the diagram
ENH	[Web Modeler] Now supports the ability to clear or delete and association lines from the diagram
ENH	[Web Modeler] Now supports the ability to create associations for embedded shapes when publishing
ENH	[Web Modeler] Now has the ability to revert the deletion of an object prior to publishing
SEC	[Security] Several security fixes for SAST and DAST
BUG	[Web Modeler] Grid settings no longer need a refresh
BUG	[Web Modeler] Fixed an issue where the Save button was disabled when editing a newly named object
BUG	[Web Modeler] Can now create a diagram that only contains a Doc Block
BUG	[Global Search] Now supports more non-alphabetic character
BUG	[Web Designer] [ZT118815] Fixed Out of memory issue with Evolve Designer
SEC	[Suite] [ZT111106] Killbits now set for Actbar2.ocx during installation

BUG	[Web Designer] [ZT117366] Fixed warning when publishing templates, about duplicate templates, when there were none
ENH	[Web] New layout to show a simple grid (can be used in place of Simple Table), offers filtering and sorting
ENH	[Web Modeler] Regions are now supported, except navigation, explosion and association regions
ENH	[Web Modeler] Pictures are now supported off the palette
ENH	[CMI] Brand new CMI Analytics Accelerator provides live BI reporting database
BUG	[Web Modeler] Swimlane diagram, drop zone now shown if guide lines are turned on
ENH	[WebModeler] Change display name of shape to category if there a duplicates on the palette

Product Licensing

As of the 2018 release of erwin EA/BP Server, licensing is migrating to the standard erwin Inc. license system. During the migration, there will be a grace period, whereby existing customers can continue to use their existing Casewise licenses. erwin do not intend to force customers onto the new licensing, and will work with them to ensure a successful migration.



If you are considering upgrading to 2018, you should not be concerned with the new licensing system, as its usage is optional at the moment.

The license types available for erwin EA/BP Server include:

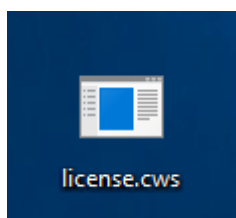
License	Description
erwin EA Server	The main server license which supports Evolve. This is usually supplied with a number of EA Contributor licenses. It often packages together both a Dynamic and a Static site license.
erwin BP Server	The main server license which supports Evolve. This is usually supplied with a number of BP Modeler licenses (aka eModeler). It often packages together both a Dynamic and a Static site license.
erwin EA Contributor	A single named user license, that enables users to modify content through a site.
erwin BP Modeler	A single named user license, that enables users to modify content through a site and use BP Modeler (aka eModeler).

Activating your erwin License:

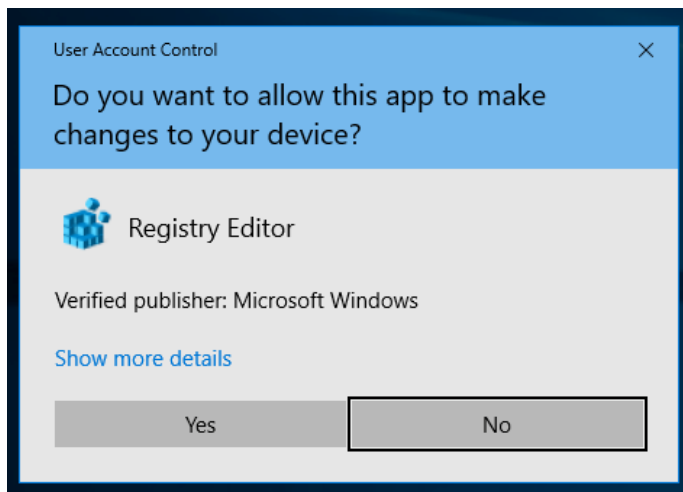
The process for activating an erwin EA/BP license is very simple.

1. Support will provide you with a single license file per Server machine that requires licensing.

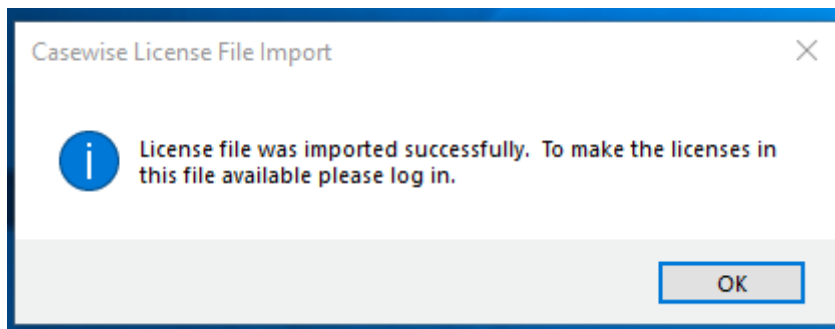
For example:



2. Having installed the software, copy this file to your server's desktop.
3. Double click on the file. You will be presented with a warning:

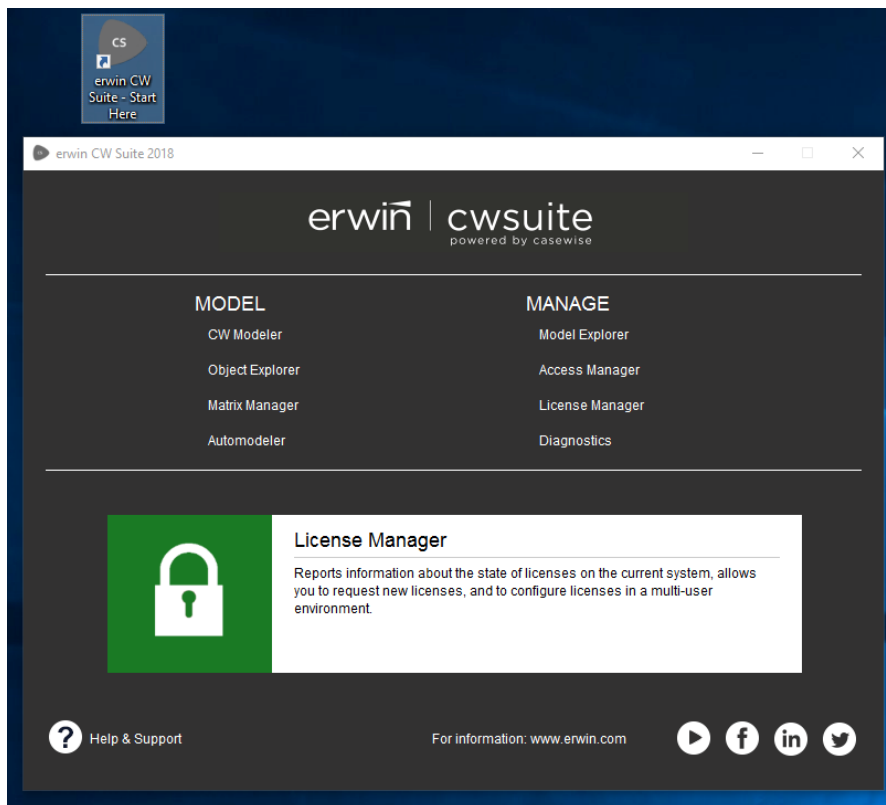


4. Press "Yes" to allow the tool to change the registry.

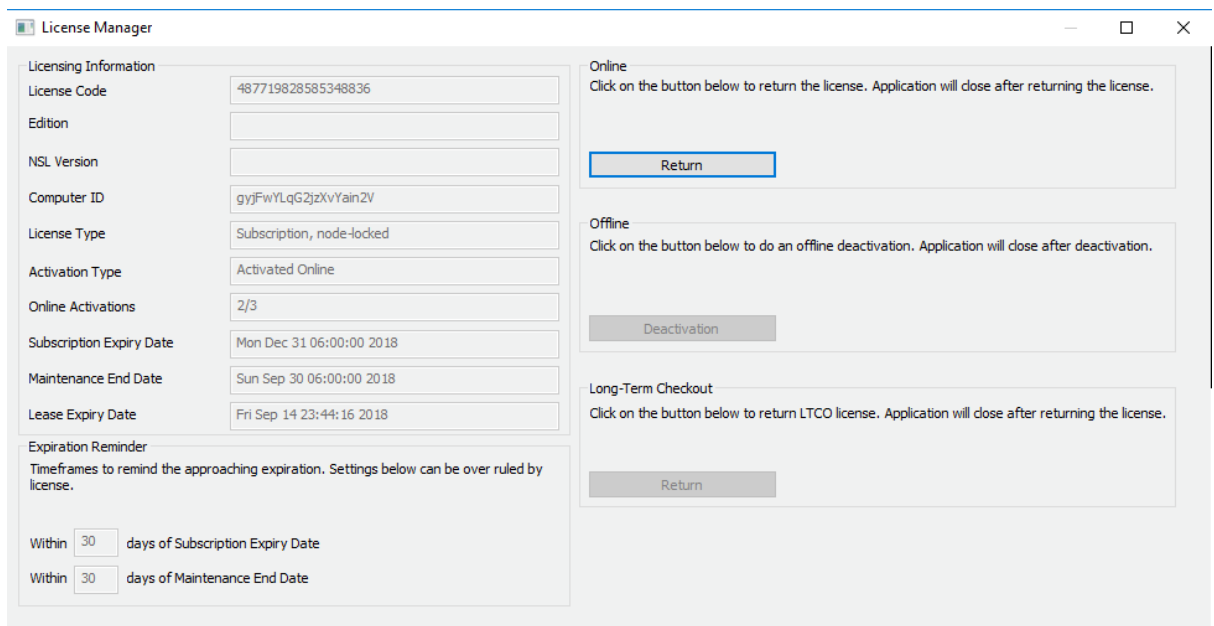


5. The software now has the purchased licenses activated on the server. To verify this, load the License Manager.

Open erwin CW Suite - Start Here...



6. Click on License Manager, and login.
7. License Manager will show the license code, activation count and various other attributes.



Returning your erwin License

If you need to move the license from on server to another, this can be performed up to 3 times, without contacting support.

1. Press "Return" in the "Online" section of the License Manage dialog
This will contact the licensing system, and return the license to the pool
2. Activate the software as usual on your new server.

If you run out of activations, you can have the counter reset, by contacting support.

About Us

Quest creates software solutions that make the benefits of new technology real in an increasingly complex IT landscape. From database and systems management to Active Directory and Office 365 management, and cyber security resilience, Quest helps customers solve their next IT challenge now. Around the globe, more than 130,000 companies and 95% of the Fortune 500 count on Quest to deliver proactive management and monitoring for the next enterprise initiative, find the next solution for complex Microsoft challenges and stay ahead of the next threat. Quest Software. Where next meets now. For more information, visit www.quest.com.

Technical support resources

Technical support is available to Quest customers with a valid maintenance contract and customers who have trial versions. You can access the Quest Support Portal at <https://support.quest.com>.

The Support Portal provides self-help tools you can use to solve problems quickly and independently, 24 hours a day, 365 days a year. The Support Portal enables you to:

- Submit and manage a Service Request
- View Knowledge Base articles
- Sign up for product notifications
- Download software and technical documentation
- View how-to-videos
- Engage in community discussions
- Chat with support engineers online
- View services to assist you with your product.