

# Metalogix<sup>®</sup> Archive Manager for Files 8.3

## **Alternate Access Guide**



## © 2020 Quest Software Inc. ALL RIGHTS RESERVED.

This guide contains proprietary information protected by copyright. The software described in this guide is furnished under a software license or nondisclosure agreement. This software may be used or copied only in accordance with the terms of the applicable agreement. No part of this guide may be reproduced or transmitted in any form or by any means, electronic or mechanical, including photocopying and recording for any purpose other than the purchaser's personal use without the written permission of Quest Software Inc.

The information in this document is provided in connection with Quest Software products. No license, express or implied, by estoppel or otherwise, to any intellectual property right is granted by this document or in connection with the sale of Quest Software products. EXCEPT AS SET FORTH IN THE TERMS AND CONDITIONS AS SPECIFIED IN THE LICENSE AGREEMENT FOR THIS PRODUCT, QUEST SOFTWARE ASSUMES NO LIABILITY WHATSOEVER AND DISCLAIMS ANY EXPRESS, IMPLIED OR STATUTORY WARRANTY RELATING TO ITS PRODUCTS INCLUDING, BUT NOT LIMITED TO, THE IMPLIED WARRANTY OF MERCHANTABILITY, FITNESS FOR A PARTICULAR PURPOSE, OR NON-INFRINGEMENT. IN NO EVENT SHALL QUEST SOFTWARE BE LIABLE FOR ANY DIRECT, INDIRECT, CONSEQUENTIAL, PUNITIVE, SPECIAL OR INCIDENTAL DAMAGES (INCLUDING, WITHOUT LIMITATION, DAMAGES FOR LOSS OF PROFITS, BUSINESS INTERRUPTION OR LOSS OF INFORMATION) ARISING OUT OF THE USE OR INABILITY TO USE THIS DOCUMENT, EVEN IF QUEST SOFTWARE HAS BEEN ADVISED OF THE POSSIBILITY OF SUCH DAMAGES. Quest Software makes no representations or warranties with respect to the accuracy or completeness of the contents of this document and reserves the right to make changes to specifications and product descriptions at any time without notice. Quest Software does not make any commitment to update the information contained in this document.

If you have any questions regarding your potential use of this material, contact:

Quest Software Inc.  
Attn: LEGAL Dept.  
4 Polaris Way  
Aliso Viejo, CA 92656

Refer to our Web site (<https://www.quest.com>) for regional and international office information.

### Patents

Quest Software is proud of our advanced technology. Patents and pending patents may apply to this product. For the most current information about applicable patents for this product, please visit our website at <https://www.quest.com/legal>.

### Trademarks

Quest, the Quest logo, and Metalogix are trademarks and registered trademarks of Quest Software Inc. and its affiliates. For a complete list of Quest marks, visit <https://www.quest.com/legal/trademark-information.aspx>. All other trademarks and registered trademarks are the property of their respective owners.

### Legend



**CAUTION:** A caution icon indicates potential damage to hardware or loss of data if instructions are not followed.



**IMPORTANT, NOTE, TIP, MOBILE OR VIDEO:** An information icon indicates supporting information.

Metalogix® Archive Manager for Files

Updated November 2020

Version 8.3

# Contents

<b>Introduction .....</b>	<b>4</b>
<b>Topology .....</b>	<b>5</b>
<b>Configuration .....</b>	<b>6</b>
<b>Running application in silent mode .....</b>	<b>10</b>
<b>Result files .....</b>	<b>11</b>
<b>User Interface .....</b>	<b>12</b>
<b>About Us .....</b>	<b>13</b>
Contacting Quest .....	13
Technical Support Resources .....	13

---

# Introduction

The following document contains overview of Metalogix 'Alternate Access Server' feature. Because archived files must be accessible for users to browse their data from ArchiveWeb7 even if file servers are inaccessible or decommissioned, it is necessary to provide solution that controls the ability of users to view or access archived files.

The purpose of this feature is to establish alternate access to archived files even if the server, from which they have been archived, is not in the environment any more. The feature is available since Archive Manager for Files v7.2. However, it can be utilized also when upgrading from older versions. When upgrading, a special tool must be used to process the folder/file permissions. The tool stores existing file system permissions for archived files in database to enable further work with archived files. The ArchiveWeb interface will be used for preview and download of files.

## **Basic requirements for the environment where the feature can be used are following:**

- ✓ Common database where Archive Manager for Files stores its metadata for all servers that share same ArchiveWeb front-end
- ✓ Common HSM server for all servers that share same ArchiveWeb front-end
- ✓ Common Search server for all servers that share same ArchiveWeb front-end

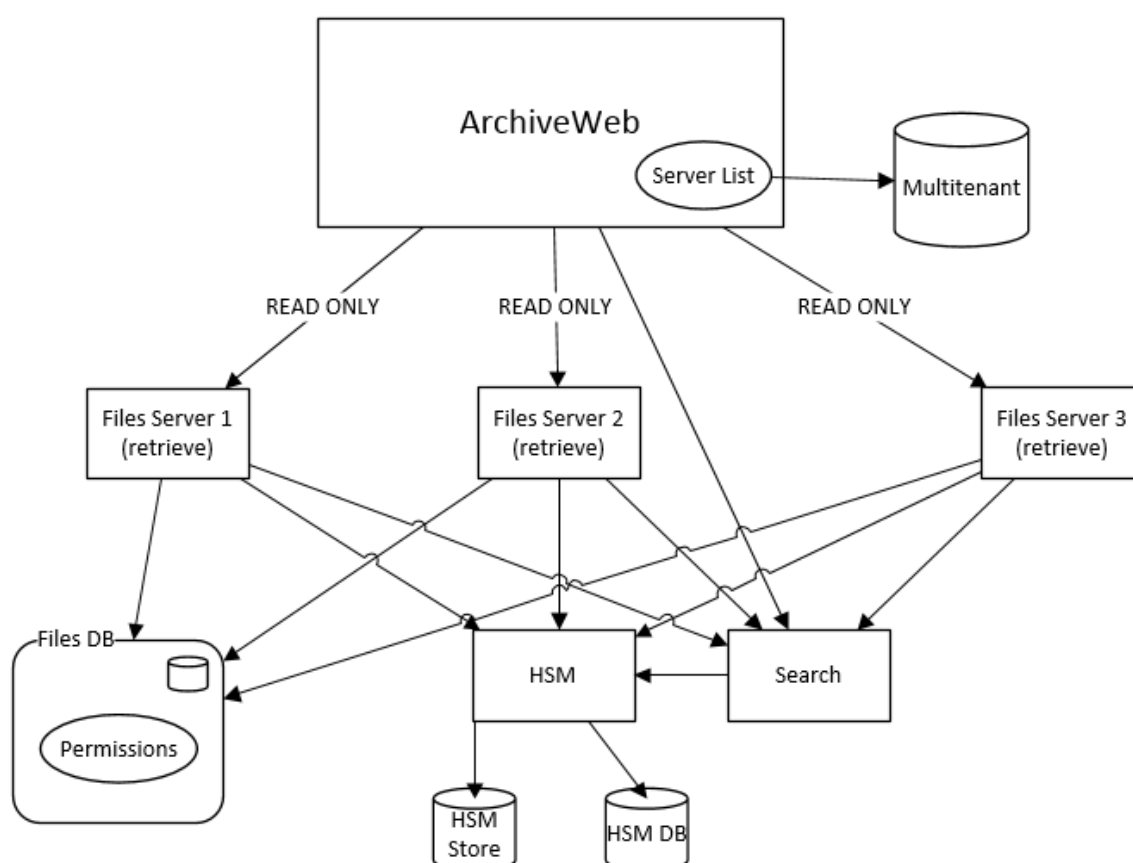
## Software prerequisites

- ✓ .NET Framework 4.0
- ✓ Windows Server 2012 / 2016 / 2019
- ✓ SQL Server 2012 or higher / Oracle 12c or higher

This feature/tool is installed automatically when Metalogix Archive Manager for Files Installer (v7.2 and higher) runs.

## Topology

Archive Manager for Files archive server will offer retrieve functionality in its core components for file access. Core services will be able to handle retrieve access from any client which uses the File Archive API.



---

# Configuration

As mentioned earlier, alternate access is automatically active in Archive Manager for Files v7.2 and higher. To benefit from it in case of fresh Archive Manager installation:

- Install two instances of Archive Manager for Files
- Then in the ArchiveWeb specify one of the servers as an Archive Server and the second as a Retrieve Server (see step 6 below)

In case of upgrading, a special tool is utilized. This tool processes user permissions to already archived files and thus enables alternate access also for items archived with previous Archive Manager versions.

This tool can be used with Archive Manager version 6.1 and newer. It is the minimum version supported by Alternate Access if the file server is compatible according the Alternate Access requirements described in this document

By default the tool is located under:

**<installdir>\PermissionsUpdateTool\PermissionsUpdate.exe**

(where <installdir> is installation directory of Archive Manager for Files)

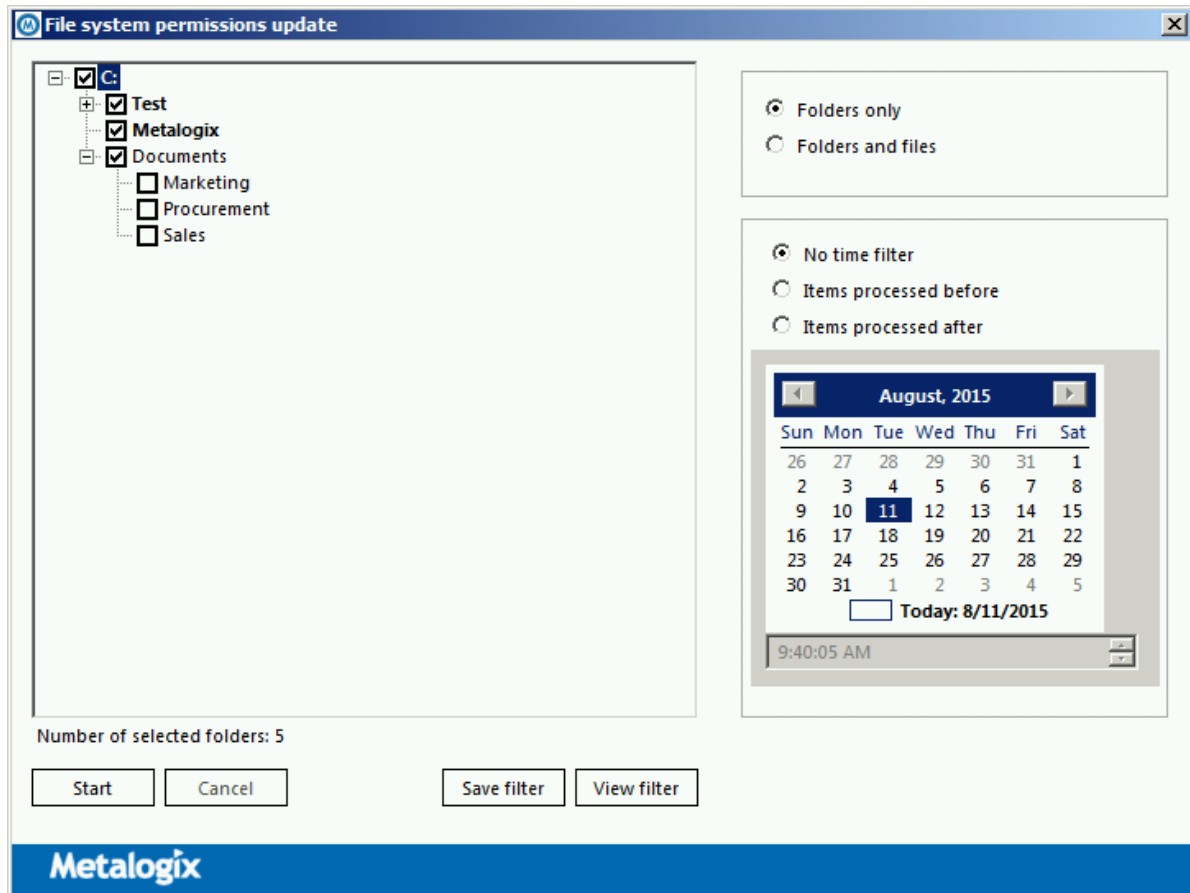
Let's say you have been archiving files with Archive Manager for some time already. Now you wish to decommission one of the old file servers in your environment but want to keep its folders and files still available for users. Here comes the Archive Manager 7.2 Alternate Access feature.

It allows access to the required folders and files in ArchiveWeb. The tool will process the old server files and establish relevant references to them via active Archive Manager for Files server (with updated permissions).

**NOTE:** The tool is not necessary, if all files have been archived with version 7.2 and File permissions changes tracking (Enterprise Manager / Settings / General / Files permissions changes tracking).

Here is how to do it:

1. Run the tool from <installdir>\ PermissionsUpdateTool\ PermissionsUpdate.exe.  
(where <installdir> is installation directory of Archive Manager for Files)



2. By default all folders are selected recursively. Only selected folders will be processed, and consequently these folders will be accessible via ArchiveWeb.

**NOTE:** Click the checkbox once to select corresponding folder, click twice to select all subfolders of that folder and clicking once again will remove all checks in the branch. Number of currently selected folders appears under the tree view.

3. If necessary, define further filters in the right pane:
  - Folders only – user permissions only on the folders level will be processed (not so time consuming)
  - Folders and files – user permissions on both folders and files level will be processed
  - Time filtering – applicable only in cases when some folders/files have been already processed by this tool; you may have canceled the

permission processing and want to continue next day from the point where the tool stopped

4. Now save the filter for future use or Start the process. When the process is finished, Results window appears. Click on the **Detail** link to view result details in separate window:

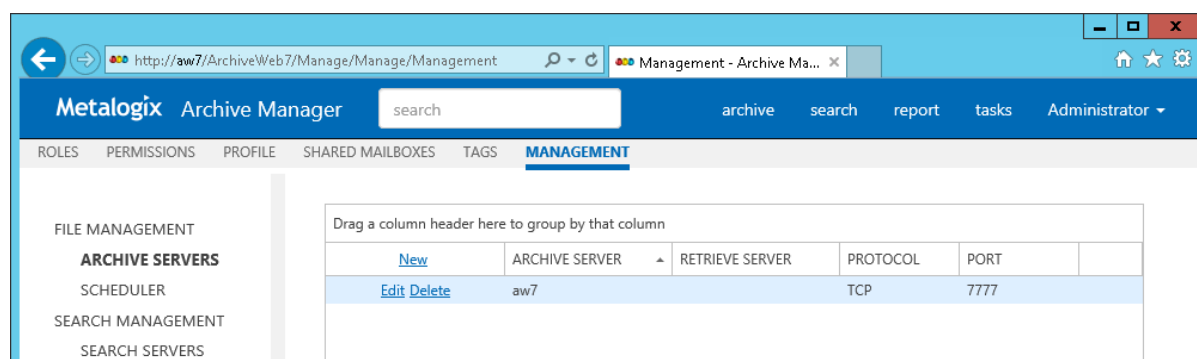
*Succeeded* – items with file system permissions successfully updated in database

*Skipped* – items found in database but not found at disk

*Failed* – items which file system permissions were not updated for some reason

5. To set the alternate access server, open ArchiveWeb. Click **<LoggedonUserName>/ Manage Settings / Management / File Management - Archive Servers**.

Functionality is turn on if any user with rights creates relationship between Archive server and retrieve server. Retrieve server can be any archive/retrieve server complying with decommission requirements.



Description:

- “ARCHIVE SERVER” – files archive server responsible for archive and data post-processing
- “RETRIEVE SERVER” – files retrieve server responsible for data retrieve
- “PROTOCOL” - active communication protocol for data retrieve. Can be archive/files server where for Files core is installed
- “PORT” – active Files core communication port for data retrieve

Each “ARCHIVE SERVER” can be added only once and can have only one “RETRIEVE SERVER” at all in the time.



6. In the list view either:

- Click **New** to add a new File Archive Server; enter one server as Archive Server and the second server as Retrieve server. This second server will process requests when the Archive server will be inaccessible or decommissioned completely. (Already added Archive server cannot be added as a Retrieve server.)
- Click **Edit** for the existing File Archive server and enter second File Archive Server as Retrieve server.

---

## Running application in silent mode

If application is started with command line argument '-run', settings are read from saved filter settings and update process is started automatically.

Running application command: *PermissionsUpdate -run*

## Result files

Processing results are stored in files too, as in the processing window even in silent mode.

Path to files:

*PathToApplication\PermissionsUpdateLogs\YYYY-MM-DD-HH-mm-ss\*

### Summary information

(Summary.xml)

<summary>

<Start>2015-06-23T10:43:38</Start> - start time of processing

<End>2015-06-23T10:43:38</End> - end time of processing

<Succeeded>1</Succeeded>- number of succeeded items

<Skipped>0</Skipped>>- number of skipped items

<Failed>0</Failed>>- number of failed items

</summary>

### UP\_FAILEDXXX.log – list of failed items

This file contains list of failed items in format:

Time of processing|Path to file|Reason for failure

### UP\_OKXXX.log – list of succeeded items

This file contains list of succeeded items in format:

Time of processing|Path to file

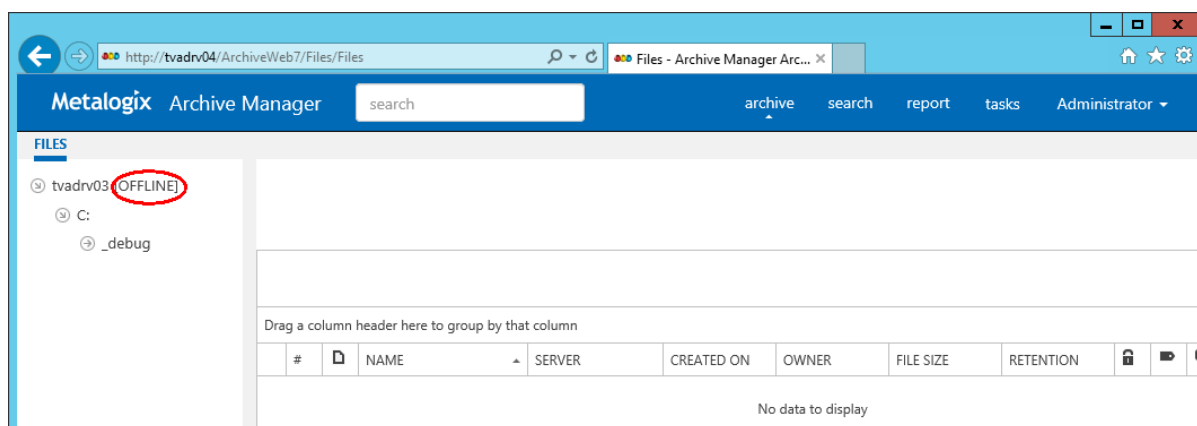
### UP\_SKIPPEDXXX.log – list of skipped items

This file contains list of skipped items in format:

Time of processing|Path to file

## User Interface

In ArchiveWeb user will see the old server in the list view under **Archive / Files** tab. Its folders and archived files will be browseable and manageable as before. Only the “offline” tag (see the screenshot below) will notify the user that the server is inaccessible in production environment.



---

## About Us

Quest creates software solutions that make the benefits of new technology real in an increasingly complex IT landscape. From database and systems management, to Active Directory and Office 365 management, and cyber security resilience, Quest helps customers solve their next IT challenge now. Around the globe, more than 130,000 companies and 95% of the Fortune 500 count on Quest to deliver proactive management and monitoring for the next enterprise initiative, find the next solution for complex Microsoft challenges and stay ahead of the next threat. Quest Software. Where next meets now. For more information, visit [www.quest.com](http://www.quest.com).

## Contacting Quest

For sales or other inquiries, visit [www.quest.com/contact](http://www.quest.com/contact).

## Technical Support Resources

Technical support is available to Quest customers with a valid maintenance contract and customers who have trial versions. You can access the Quest Support Portal at <https://support.quest.com>

The Support Portal provides self-help tools you can use to solve problems quickly and independently, 24 hours a day, 365 days a year. The Support Portal enables you to:

- Submit and manage a Service Request
- View Knowledge Base articles
- Sign up for product notifications
- Download software and technical documentation
- View how-to-videos
- Engage in community discussions
- Chat with support engineers online
- View services to assist you with your product