

Metalogix[®] Archive Manager for Exchange 8.3

Universal Access Guide



© 2020 Quest Software Inc. ALL RIGHTS RESERVED.

This guide contains proprietary information protected by copyright. The software described in this guide is furnished under a software license or nondisclosure agreement. This software may be used or copied only in accordance with the terms of the applicable agreement. No part of this guide may be reproduced or transmitted in any form or by any means, electronic or mechanical, including photocopying and recording for any purpose other than the purchaser's personal use without the written permission of Quest Software Inc.

The information in this document is provided in connection with Quest Software products. No license, express or implied, by estoppel or otherwise, to any intellectual property right is granted by this document or in connection with the sale of Quest Software products. EXCEPT AS SET FORTH IN THE TERMS AND CONDITIONS AS SPECIFIED IN THE LICENSE AGREEMENT FOR THIS PRODUCT, QUEST SOFTWARE ASSUMES NO LIABILITY WHATSOEVER AND DISCLAIMS ANY EXPRESS, IMPLIED OR STATUTORY WARRANTY RELATING TO ITS PRODUCTS INCLUDING, BUT NOT LIMITED TO, THE IMPLIED WARRANTY OF MERCHANTABILITY, FITNESS FOR A PARTICULAR PURPOSE, OR NON-INFRINGEMENT. IN NO EVENT SHALL QUEST SOFTWARE BE LIABLE FOR ANY DIRECT, INDIRECT, CONSEQUENTIAL, PUNITIVE, SPECIAL OR INCIDENTAL DAMAGES (INCLUDING, WITHOUT LIMITATION, DAMAGES FOR LOSS OF PROFITS, BUSINESS INTERRUPTION OR LOSS OF INFORMATION) ARISING OUT OF THE USE OR INABILITY TO USE THIS DOCUMENT, EVEN IF QUEST SOFTWARE HAS BEEN ADVISED OF THE POSSIBILITY OF SUCH DAMAGES. Quest Software makes no representations or warranties with respect to the accuracy or completeness of the contents of this document and reserves the right to make changes to specifications and product descriptions at any time without notice. Quest Software does not make any commitment to update the information contained in this document.

If you have any questions regarding your potential use of this material, contact:

Quest Software Inc.
Attn: LEGAL Dept.
4 Polaris Way
Aliso Viejo, CA 92656

Refer to our Web site (<https://www.quest.com>) for regional and international office information.



Patents

Quest Software is proud of our advanced technology. Patents and pending patents may apply to this product. For the most current information about applicable patents for this product, please visit our website at <https://www.quest.com/legal>.

Trademarks

Quest, the Quest logo, and Metalogix are trademarks and registered trademarks of Quest Software Inc. and its affiliates. For a complete list of Quest marks, visit <https://www.quest.com/legal/trademark-information.aspx>. All other trademarks and registered trademarks are property of their respective owners.

Legend

-  **CAUTION:** A caution icon indicates potential damage to hardware or loss of data if instructions are not followed.
-  **IMPORTANT, NOTE, TIP, MOBILE OR VIDEO:** An information icon indicates supporting information.

Metalogix® Archive Manager for Exchange

Updated November 2020

Version 8.3

Contents

About Universal Access	4
Software Requirements	4
Installation	5
Configuration	7
User Interface	13
About Us	14
Contacting Quest	14
Technical Support Resources	14

About Universal Access

Universal Access is an additional feature of Archive Manager for Exchange. It consists of two components:

- **IMAP Server for Archive Manager** – this service processes IMAP requests from clients and outputs responses for these requests.
- **IMAP Wcf Service** – communicates with Archive Manager for Exchange to provide access to the **IMAP Server for Archive Manager**.

Each component can be installed on a separate machine and the machine could be inside or outside the domain where Archive Manager for Exchange is installed. If the components are installed on machines in another domain, a trust relationship must exist between the two domains.

Software Requirements

- .NET Framework 4.5
- Windows Server 2012 and higher
- Metalogix Archive Manager for Exchange 8.3
- Database
 - MS SQL Server 2012 or higher
 - Oracle 12c or higher

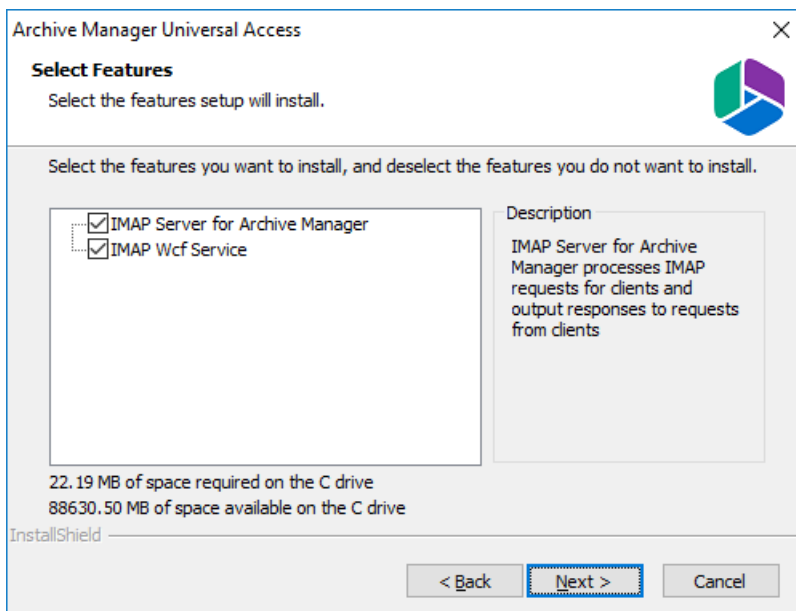
Supported clients for Universal Access

- Outlook 2013
- Outlook 2016
- Outlook 2019
- Mozilla Thunderbird 31.5.0 and above
- Android 8 - default email client
- iOS 11 and above - default email client

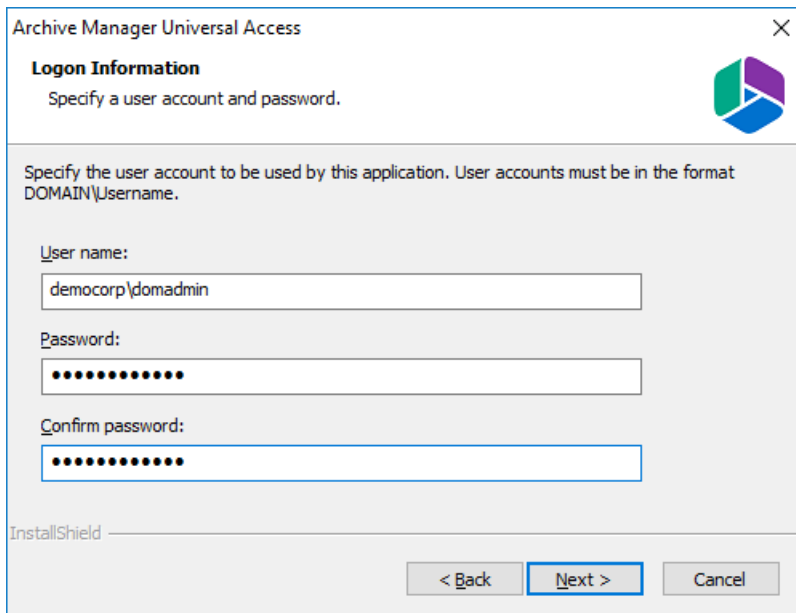
Installation

To install Universal Access follow the steps described below:

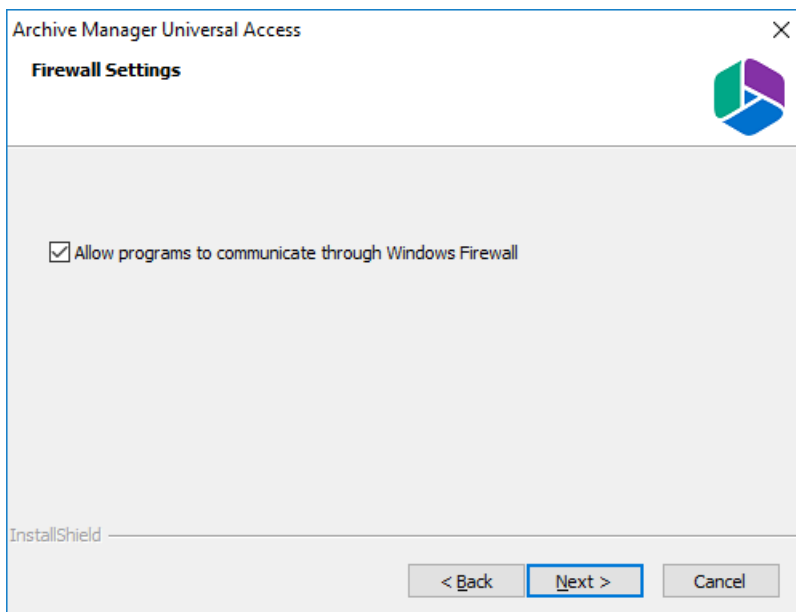
1. Run the installer. The default location is `C:\Metalogix\Archive Manager Installation Package\Universal Access\Archive Manager Universal Access Setup.exe`.
2. On the *Welcome* window click **Next**. The *License Agreement* window opens.
3. Read the license terms and if you agree, click **Yes** to continue. The *Choose Destination Location* window opens.
4. Review the destination location. Click **Change** to alter the location if necessary.
5. Click **Next**. The Select Features window opens. Select the component you want to install on this machine. Usually both are installed on the same machine.



6. Click **Next**. The *Logon Information* window opens. Enter the credentials of the user and confirm the password. Typically this is the administrator or the superuser account used in Archive Manager. If the components are being installed on a different domain computer, the user must have sufficient privileges to run the services.



7. Click **Next**. The *Firewall Settings* window opens. Select the check box to allow the installer to add selected Archive Manager Universal Access services to the Windows Firewall Exception list. Archive Manager components will be then able to communicate through the firewall.



8. Click **Next**. The *Ready to Install the Program* window opens.
9. Click **Install**. The *Setup Status* window opens to display the progress of the installer.
10. When the *InstallShield Wizard Complete* window opens, click **Finish** to continue with the configuration.

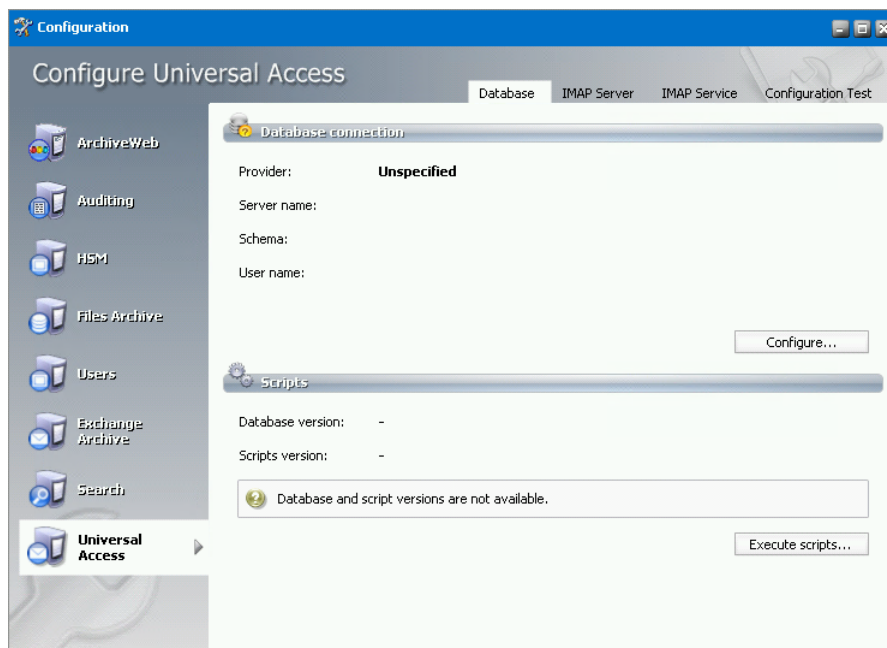
Configuration

When the installation completes you must configure the feature with the Archive Manager Configuration tool as described in the steps below. .

Configure the Database Server

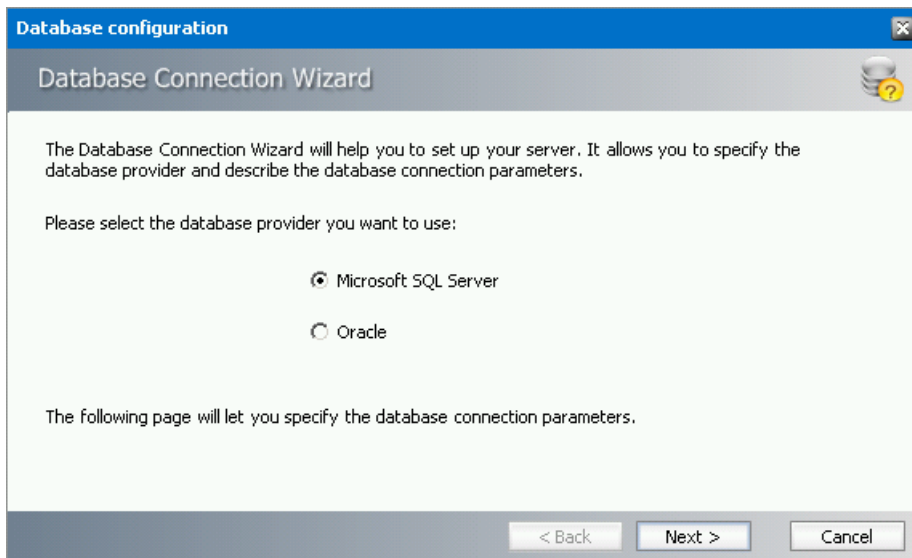
1. When the installation completes the Archive Manager Configuration tool opens. You can also click **Start > Metalogix > Archive Manager Configuration** to open the Archive Manager Configuration tool. Depending on your environment you may see several tabs on the left navigation pane. If you install the Universal Access feature components on a computer that does not have the Archive Manager Configuration tool pre-installed, a new Archive Manager Configuration tool is installed on that computer, and only the **Universal Access** tab is visible.
2. Click the **Universal Access** tab to start configuring the feature.

i **NOTE:** The *Universal Access > IMAP Service* tab is used to configure the *IMAP Wcf Service* component. The *Universal Access > IMAP Server* tab is used to configure the *IMAP Server for Archive Manager* component.



3. Click **Configure**. Choose your database provider.

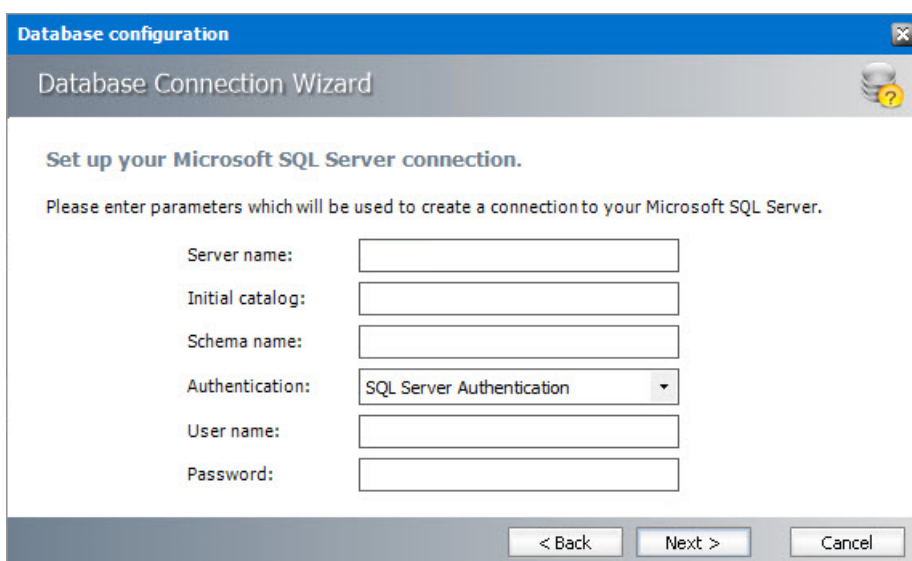
i **NOTE:** The configuration tool can create the MS SQL database in the specified SQL Server. However, an Oracle database must be available in advance.



4. Click **Next**. Depending on your choice of database provider fill in the text fields as described below:

For Microsoft SQL Server

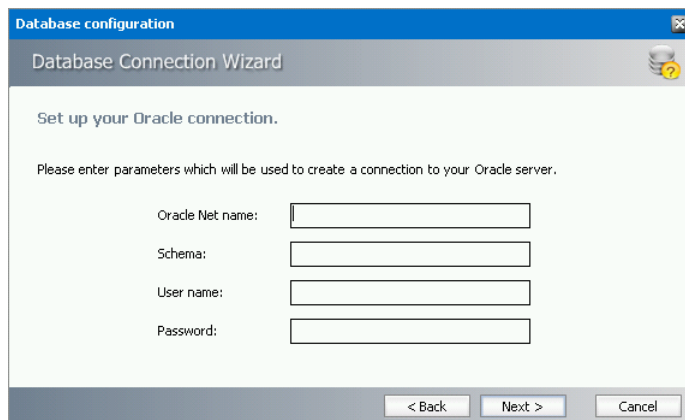
- a. **Server name** - name of the SQL server.
- b. **Initial catalog** - name of the Archive Manager database (e.g. exchangeDB)
- c. **Schema Name** - name of the SQL Schema (e.g. **dbo**)
- d. **Authentication** - authentication type used for the database. Choose either **Windows authentication** or **SQL Server authentication**.
- e. **User name** - database login user name if SQL Server authentication is the selected as the authentication mode.
- f. **Password** - password of the database user if SQL Server authentication is the selected as the authentication mode.



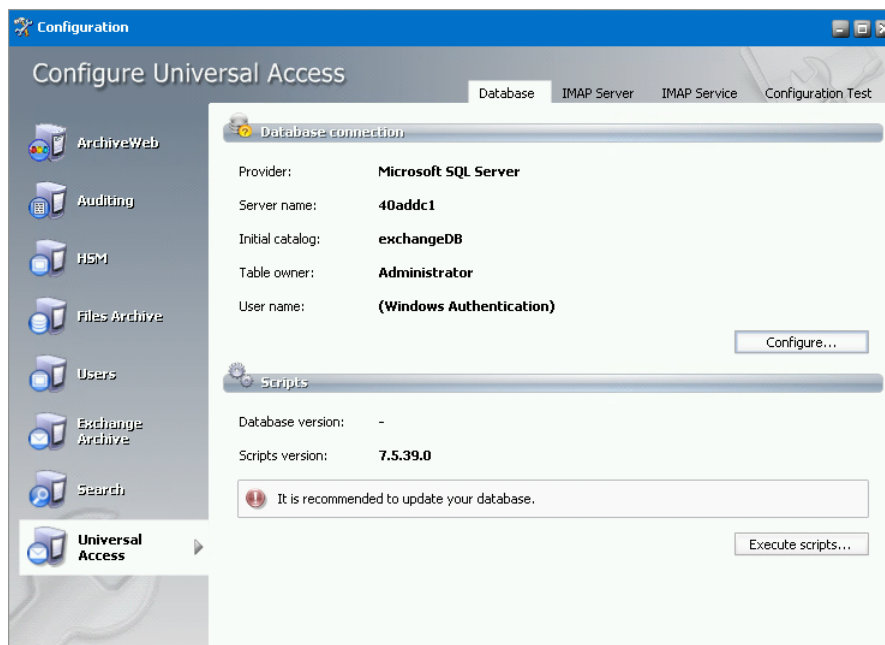
- i** **NOTE:** When updating Archive Manager from one version to another you must not change the following values in the Configuration tool on any of the tabs: Server Name, Initial Catalog and Table Owner.

For Oracle

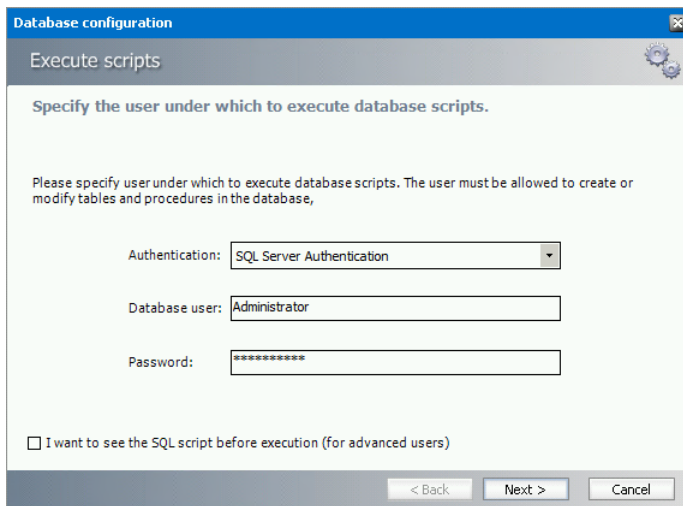
- a. **Oracle net name** - net service name that describes the network address of the database server in your `tnsnames.ora` file.
- b. **Schema** - name of the Oracle schema from your `tnsnames.ora` file.
- c. **User name** - database login user name.
- d. **Password** - password of the database user.



5. Click **Next**. The database provider settings are used to verify the database connection. Back on the Universal Access tab run the sql scripts by clicking **Run Scripts**.



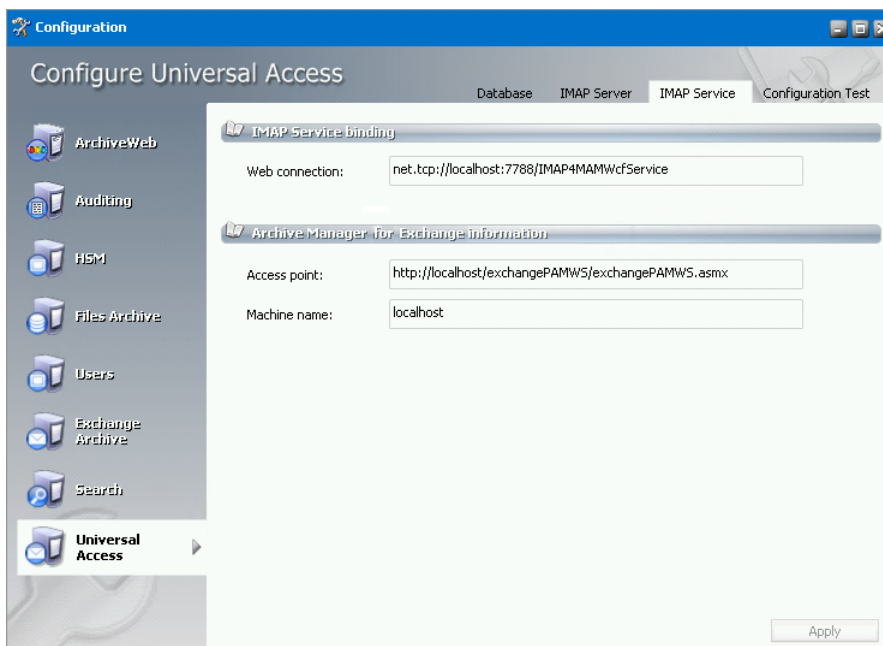
6. Click **Run Scripts**. The list of the scripts will appear.
7. In case of **SQL Authentication**, click Next once more to accept the database login user and its password.



8. Click **Next** to run the scripts.

Configure the IMAP Service

1. Click the **IMAP Service** tab to open the configuration window for the IMAP Service. The IMAP Service tab is used to configure **IMAP Wcf Service** details.



Provide the information as described below:

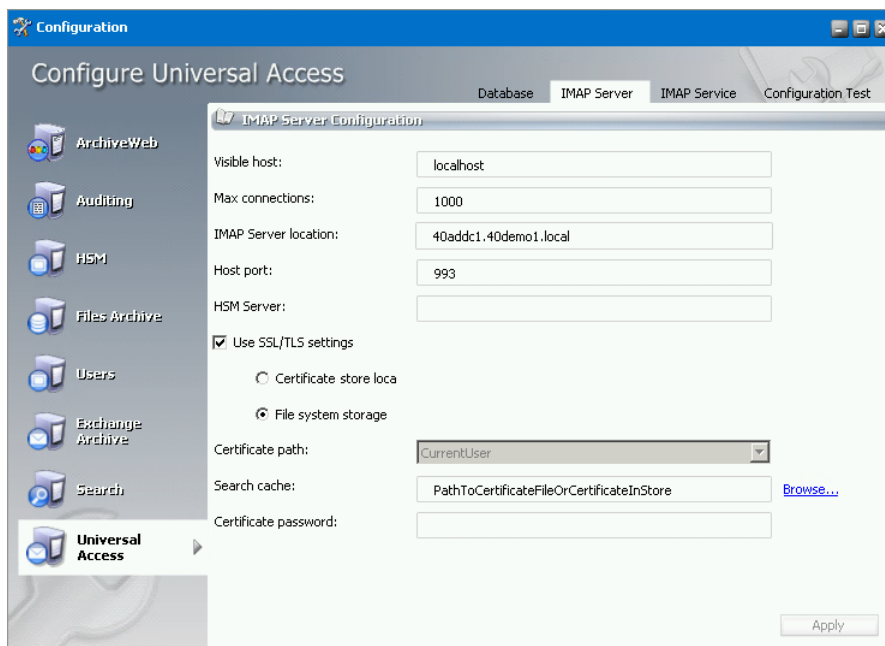
- a. **Web connection** - this field specifies the connection to IMAP Wcf Service. The default value is `net.tcp://localhost:8083/IMAP4MAMWcfService` and should be customized by replacing `<localhost>` with the IP address of the machine where the IMAP Wcf Service is installed. If it is installed on the current machine, `<localhost>` will work as well. However, we recommend that you use the IP address in this case as well.

The following two fields are available only if IMAP Server for Archive Manager component has been selected at the installation:

- b. **Access point** - here enter the connection details of exchangePAMWS component on your Archive Manager server. The default value is `http://<localhost>/exchangePAMWS/exchangePAMWS.asmx` where <localhost> should be replaced by the IP address of your Archive Manager server.
- c. **Machine name** - the Archive Manager server name. If the Universal Access feature is installed on a separate machine (not on Archive Manager or HSM server), use **localhost** instead.

Configure the IMAP Server

1. Click the **IMAP Server** tab to open the configuration window for the IMAP Server. The IMAP Server tab is applicable only the machine where the IMAP Server for Archive Manager component has been installed.



Provide the information as described below:

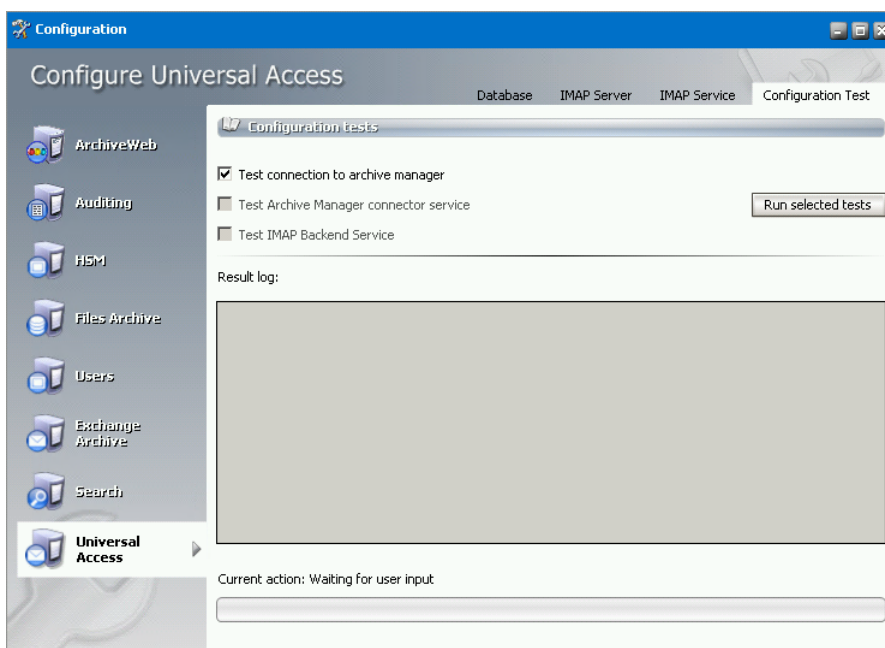
- a. **Visible host** - enter the name of the machine where IMAP Server for Archive Manager component is installed. If it is installed on a separate machine (not on Archive Manager or HSM server), use the **localhost** instead.
- b. **Max connections** - max number of clients using Universal Access.
- c. **IMAP Server location** – enter the FQN of the machine where IMAP Server for Archive Manager component is installed
- d. **Host port** - enter the port number. The Port number needs to be changed only if SSL communication is used. In such cases enter 993.
- e. **HSM Server** – enter the IP address of the machine where HSM server is installed
- f. **Use SSL/TLS settings** – check if you are using SSL communication. If SSL communication is used, configure certification details (otherwise these options can be ignored). Choose storage location of certificate:

- i. **Certificate store location**
 - ii. **File system**
 - g. **Certificate path** - applicable only for Certificate store option; select the location of your certificate in registry (CurrentUser or LocalMachine)
 - h. **Search cache** – click the **Browse** button to specify path to the certificate or certificate in store.
 - i. **Certificate password** – fill in if applicable
2. Click **Apply** to save the settings.

Test the configuration

1. Click the **Configuration Test** tab to test your configuration. Select the check box for the test you want to run and click the **Run selected tests** button. The results will be displayed in the results log.

i | **NOTE:** The **Test Archive Manager connector service** is available only when the IMAP Server for Archive Manager component is installed. The **Test IMAP Backend Service** is available only when the IMAP Wcf Service component is installed.

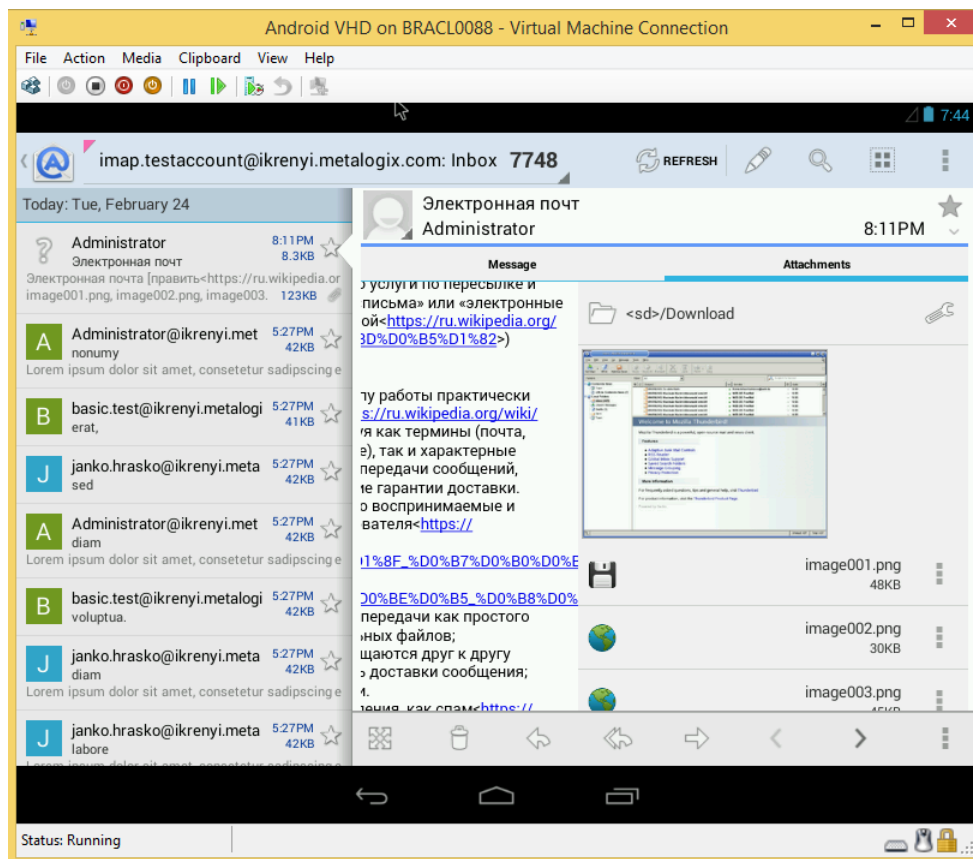


2. View the results in the **Result Log** pane.

User Interface

Before you can use the Universal Access feature, you must set up your email account with the IMAP server as the incoming server on you desktop or mobile devices. The IP address and Port Number of the IMAP Server are available on the **Universal Access > IMAP Server** tab of the Archive Manager Configuration tool.

After you have successfully configured the IMAP server on each device you will have seamless access on the devices. An illustration of an Android device is shown below.



About Us

Quest creates software solutions that make the benefits of new technology real in an increasingly complex IT landscape. From database and systems management, to Active Directory and Office 365 management, and cyber security resilience, Quest helps customers solve their next IT challenge now. Around the globe, more than 130,000 companies and 95% of the Fortune 500 count on Quest to deliver proactive management and monitoring for the next enterprise initiative, find the next solution for complex Microsoft challenges and stay ahead of the next threat. Quest Software. Where next meets now. For more information, visit www.quest.com.

Contacting Quest

For sales or other inquiries, visit www.quest.com/contact.

Technical Support Resources

Technical support is available to Quest customers with a valid maintenance contract and customers who have trial versions. You can access the Quest Support Portal at <https://support.quest.com>

The Support Portal provides self-help tools you can use to solve problems quickly and independently, 24 hours a day, 365 days a year. The Support Portal enables you to:

- Submit and manage a Service Request
- View Knowledge Base articles
- Sign up for product notifications
- Download software and technical documentation
- View how-to-videos
- Engage in community discussions
- Chat with support engineers online
- View services to assist you with your product