



erwin Evolve

Release Notes

© 2024 Quest Software Inc.

ALL RIGHTS RESERVED.

This guide contains proprietary information protected by copyright. The software described in this guide is furnished under a software license or nondisclosure agreement. This software may be used or copied only in accordance with the terms of the applicable agreement. No part of this guide may be reproduced or transmitted in any form or by any means, electronic or mechanical, including photocopying and recording for any purpose other than the purchaser's personal use without the written permission of Quest Software Inc.

The information in this document is provided in connection with Quest Software products. No license, express or implied, by estoppel or otherwise, to any intellectual property right is granted by this document or in connection with the sale of Quest Software products. EXCEPT AS SET FORTH IN THE TERMS AND CONDITIONS AS SPECIFIED IN THE LICENSE AGREEMENT FOR THIS PRODUCT, QUEST SOFTWARE ASSUMES NO LIABILITY WHATSOEVER AND DISCLAIMS ANY EXPRESS, IMPLIED OR STATUTORY WARRANTY RELATING TO ITS PRODUCTS INCLUDING, BUT NOT LIMITED TO, THE IMPLIED WARRANTY OF MERCHANTABILITY, FITNESS FOR A PARTICULAR PURPOSE, OR NON-INFRINGEMENT. IN NO EVENT SHALL QUEST SOFTWARE BE LIABLE FOR ANY DIRECT, INDIRECT, CONSEQUENTIAL, PUNITIVE, SPECIAL, OR INCIDENTAL DAMAGES (INCLUDING, WITHOUT LIMITATION, DAMAGES FOR LOSS OF PROFITS, BUSINESS INTERRUPTION OR LOSS OF INFORMATION) ARISING OUT OF THE USE OR INABILITY TO USE THIS DOCUMENT, EVEN IF QUEST SOFTWARE HAS BEEN ADVISED OF THE POSSIBILITY OF SUCH DAMAGES. Quest Software makes no representations or warranties with respect to the accuracy or completeness of the contents of this document and reserves the right to make changes to specifications and product descriptions at any time without notice. Quest Software does not make any commitment to update the information contained in this document.

If you have any questions regarding your potential use of this material, contact:

Quest Software Inc.

Attn: LEGAL Dept

4 Polaris Way

Aliso Viejo, CA 92656

Refer to our Web site (<https://www.quest.com>) for regional and international office information.

Patents

Quest Software is proud of our advanced technology. Patents and pending patents may apply to this product. For the most current information about applicable patents for this product, please visit our website at <https://www.quest.com/legal>.

Trademarks

Quest, the Quest logo, and Join the Innovation are trademarks and registered trademarks of Quest Software Inc. For a complete list of Quest marks, visit <https://www.quest.com/legal/trademark-information.aspx>. All other trademarks and registered trademarks are property of their respective owners.

erwin Evolve – Release Notes
Updated – March 2024
Version – 2023.1.0

What's New in erwin Evolve

2023.1.0

erwin Evolve 2023.1.0 is the latest major release of the erwin Evolve Suite (11.13.0.35) and erwin Evolve Web Platform (11.13.0.40).

In this release, erwin Evolve Web Platform provides several major improvements to the Web Modeler, with minor improvements and fixes to the Evolve Web Platform. In addition, Entity/Relationship modeling in the Evolve Suite (Desktop) tool, has seen some minor improvements when displaying attributes in a diagram.

Major release 2023.1.0

This release brings new key features including:

Web Modeler Enhancements:

- Workflow for Web Modeler diagrams
 - Draft diagrams can now be published through a standard approval workflow.
 - Meaning diagrams can be reviewed, commented on and have publication rejected - pending modification - using the in-built workflow capability.
 - Enabling wider adoption of modeling in the organization, with the ability to gatekeep the published model, preserving its integrity and quality.
- Non-diagrammed objects (such as Risks on a Process model) can be created in Web Modeler.
 - Publication of these new objects is deferred until the diagram is published.
- Further tweaks to access rights
- Several Bug fixes and enhancements

Evolve Web Platform Improvements:

- Comments are now possible on drilled-down diagrams
 - When viewing a diagram in Evolve Web, if you drill down into another diagram, comments can be made directly on that diagram, using the new menu item just above the image.

Evolve Suite Improvements:

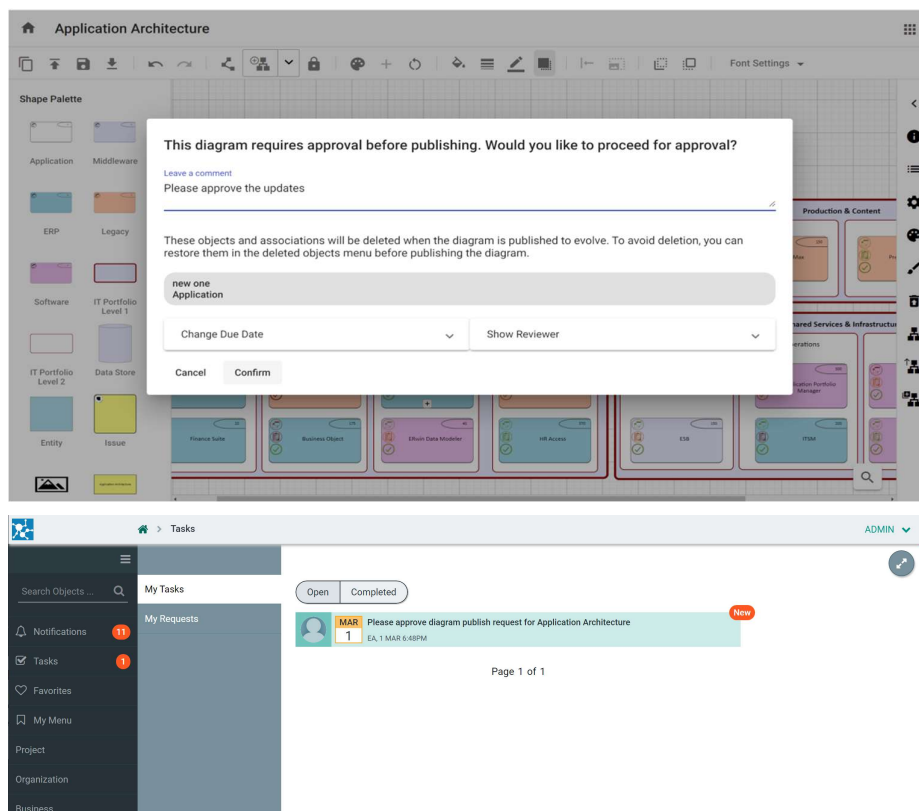
- Improved Attribute display on Entities
 - When setting up regions on shapes for Entities (typically on ER diagrams), it is now possible to have more control over the Attributes that are displayed.
 - Removing ugly pre-fixes

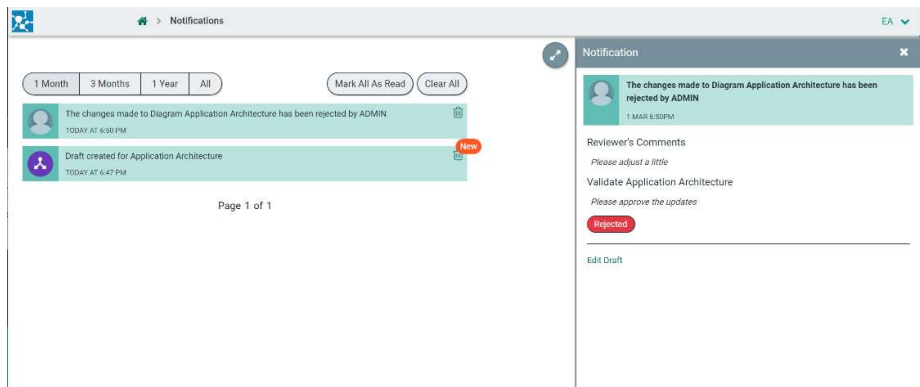
- Removing duplicate Attributes
- Assigning Key Attributes to the top section of the shape

Workflow for Web Modeler Diagrams

Bringing the ability to review and approve the publication of diagrams to Evolve. Web Modeler is now able to utilize the built-in approval workflow. Using this workflow, it is possible to assign roles that will be responsible for assessing, giving feedback and publishing diagrams.

This feature is intended to enable a broader adoption of modeling in an organization, whilst maintaining control over publication. Both modelers and reviewers are notified of updates and reviews through emails and the task UI, and the workflow pattern mirrors that of object approvals.



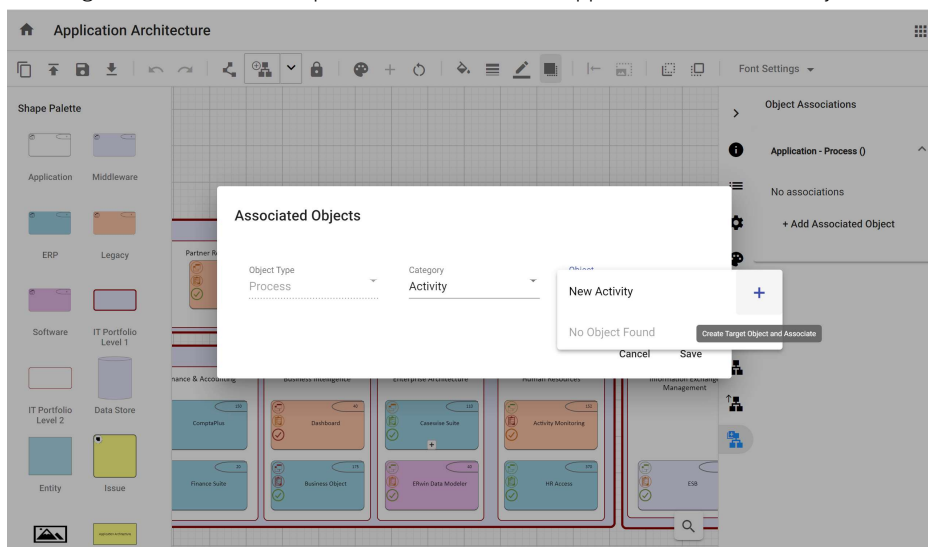


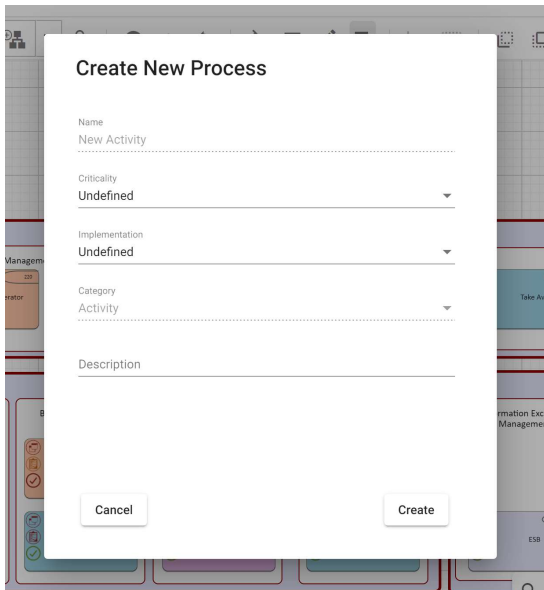
Non-diagrammed Objects can be created in Web Modeler

In previous versions of Evolve Web Modeler it was possible to associate objects on a diagram to objects that were published but not displayed on the diagram.

A typical example of a non-diagrammed object might be a Risk on a Process diagram. These are typically associated to process tasks but are not usually seen visually on the diagram. So, previously it was possible to associate a Task to Risk, that already existed in the model.

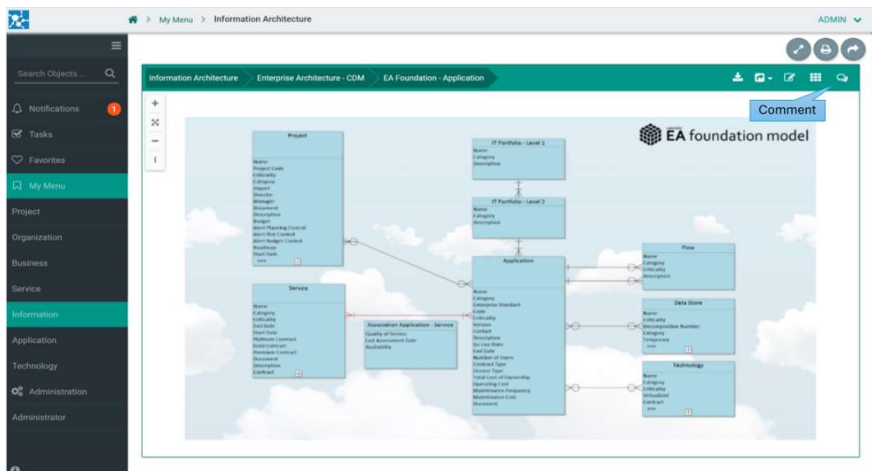
This latest feature takes it one step further, allowing the modeler to also create new non-diagrammed objects, and associate them. These objects remain un-published until the diagram itself is published, allowing reviews to also incorporate the creation and approval of these new objects.

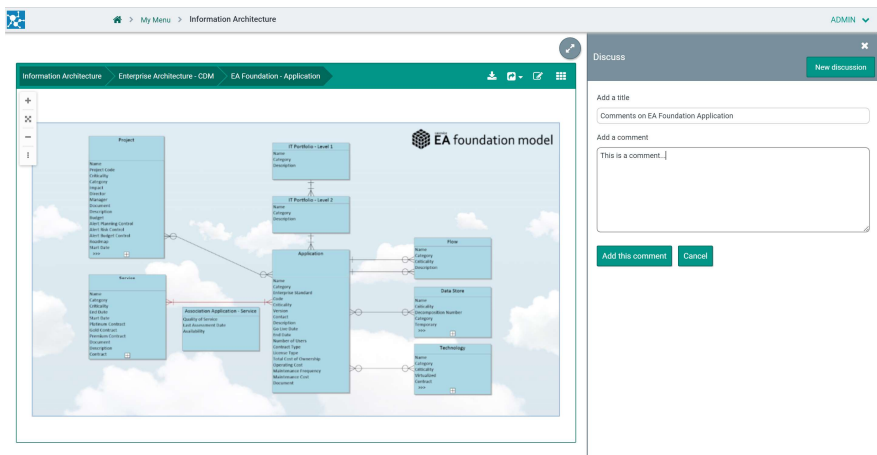




Comments on Drill Downs

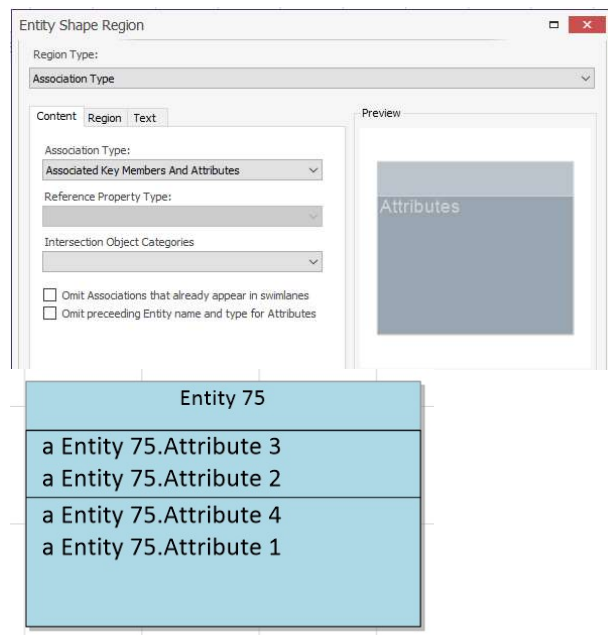
Following several requests to improve the user experience around diagram drill down behavior, we have been adding context menus to the diagram display, to allow users to open, share and print the currently viewed diagram. This latest enhancement allows users to make comments about a drilled-down diagram, from within the parent diagram's view, saving the user from having to open the child diagram explicitly.





Improved Attribute Display on Entities (ERDs)

Although Evolve is not typically used for data modeling, deferring to its more established stablemate, erwin Data Modeler. There are times when some data modeling can be useful. This enhancement allows Entities to be displayed a little more traditionally, enabling greater control over the Attribute position and content.



List of enhancements and fixes

2023.1.0 Major Release (11.13.0.35 / 11.13.0.40)	
BUG	[Evolve Web – 4432] Saving server settings sometimes hangs
BUG	[Evolve Designer – 02340071] Evolve Designer is very slow to respond when navigating the tree
BUG	[Evolve Designer] Improved performance when loading Dynamic Templates
BUG	[Evolve Web Modeler – 4848] Fixed upload size when loading gallery images
BUG	[Evolve Web Modeler – 4671] Fixed error when re-uploading the same image to the gallery
BUG	[Evolve Web Modeler - 4143] Environment variable override is no longer required for Webmodeler's Diagrammer Service. But if used the variable has changed from [DB] to [EVOLVE_MONGODB]
BUG	[Evolve Web - 4323] Diagram popout not functioning on line clicks for HTML5 Vector diagrams
Enhancement	[Evolve Web Modeler - 4328] Improved error message when publishing a diagram with a duplicate object
Enhancement	[Evolve Web Modeler – 4076] Create non-diagrammed objects when publishing
BUG	[Evolve Web – 4362] Using a URL to a static page with a uuid no longer fails
BUG	[Evolve Web – 4345] Improved handling of empty configuration for a coffeemaker
Enhancement	[Evolve Web – 4104] Invalid configuration for coffeemaker now shows a toast, error message
BUG	[Evolve Web – 4153] Corrected the time displayed for notifications with the notification engine
Enhancement	[Evolve Suite] Added support for finer Attribute region controls in the desktop modeler

BUG	[Evolve Suite] Fixed issues with group movement of objects and lines, causing connection and label breakages when moved with the keyboard.
BUG	[Evolve Web] Fixed an issue with Distribution property storage in the audit trail.
BUG	[Evolve Web Modeler - 4680] Fixed issue where the palette changes size on hovering over it.
BUG	[Evolve Web Modeler - 4696] Fixed issue where an eval watermark is shown in Web Modeler.
Enhancement	[Evolve Web Modeler] Added workflow support to approve the publication of draft diagrams.
Enhancement	[Evolve Web Modeler] Add the ability to create and associate new non-diagrammed objects in a draft diagram.
2023.0.1 Minor Release (11.12.0.8 / 11.12.0.18)	
Enhancement	[Evolve Web] - Add the Notification Engine Feature
BUG	[Evolve Web - 02199331] - The bin icon on the Evolve site does not work when deleting a matrix
BUG	[Web Modeler – 9866239] Choosing an existing object in the in-place edit doesn't save correctly
BUG	[Web Modeler - 02213783] - Link reversed on the connector when drawn same-object-type to same-object-type
Enhancement	[Web Modeler] When associating a non-diagrammed item, the UI resets with each add – the UI should stay as it was to improve useability
Technical	Many third-party components upgraded [NB: .NET Framework remains at 4.7.2 for compatibility with Windows Server 2019]
2023.0.0 Patch Release (11.12.0.8 / 11.12.0.10)	
BUG	[Evolve Web] Pressing Upgrade Meta Model twice, causes the Complex table to lose properties and Categories of CW User to be erased

2023.0.0 Major Release (11.12.0.8 / 11.12.0.9)	
Enhancement	[9865821] – Reduced diagram lockout time
Enhancement	[9866151] – Duplication, Parent Objects, and Associated Objects are now available in alphabetical order
BUG	[9866018] [Web Modeler] – The diagram pop-out for associations in Web Modeler only displays associations if the pop-out has no child object associations and has a single layout
Enhancement	[9865692] [WM-AccessRights] – The server-side access-rights restriction for diagram object level CRUD operations has been implemented on the Web Socket
BUG	[9866121] [Web Modeler] – Fixed the connector text box issue in Web Modeler
BUG	[9866044] [ZT01818013] – Search service stuck in a loop when there is nothing changed for a while
BUG	[9866173] [Web Modeler] - Addresses the issues discovered with associations in Web Modeler
BUG	[9866174] [Web Modeler] - Fixed several crashes in Web Modeler
BUG	[9866119] [Web Modeler] - Fixed an issue where DHA was not able to edit any System Process diagrams (02118126)
Enhancement	[9866056] [Web Modeler] - The Web Modeler now displays the same object to Same object connections correctly
BUG	[9866179] [WM - Access Rights] [02141051] - A user with update/read rights but no create rights can now add shapes to existing objects
BUG	[9866105] (02122129) - Fixed an issue where Web Modeler Sequence Flow Labels were not displaying correctly.
BUG	[9866137] - Fixed an issue where Complex Table Titles were not displaying on the website (02081310)
Enhancement	[9866139] - Fixed problem with association text showing without palette (02029227)

Enhancement	[9865889] [Web Modeler] - The issue with the API object type not returning all properties data (02058914) has been resolved
BUG	[9866136] - [Model Explorer] Duration and Frequency have the same data type. 01825345
BUG	[9866239] [Web Modeler] - Fixed an issue in the in-place edit where choosing an existing object did not save correctly
BUG	[9866184] [BUG] - [02145537] - Fixed Error 500 with WebRest API
Enhancement	[9866267] Using double quotes in a page search now performs an exact search
BUG	[9866273] [Web Modeler] Unable to clear shapes from the diagram without deleting permissions. Inconsistent with a desktop tool
BUG	[9866300] Global search gets stuck if large volumes of data are removed from history
Enhancement	[9866022] [Web Modeler] Add the ability to lock a shape, so it cannot accidentally be modified / moved
Enhancement	[9866093] [Evolve Web Platform] Better distinction between clicking to move a diagram (zoom and pan), and then click to open the pop-out
Enhancement	[9866123] [Model Explorer] Model downloads are available offline
Enhancement	[9866204] [Evolve Web Platform] Able to print the 'drilled down' diagram when viewing diagrams in Evolve (02151444)
BUG	[9866297] Fixed the online help link in Evolve Designer
Enhancement	[9866289] Hide tabs that have no related items (option)
Enhancement	[9866085] Reset the page search filter when the page is refreshed (option)
BUG	[9866016] Batch mode - Copy the batch script to the clipboard fixed encrypted password
Enhancement	[9866161] [Web Modeler] - If there are no line choices, then don't ask to choose the only one

Enhancement	[9866240] [Web Modeler] – In-place edit shows a list of existing objects, but if the shape is narrow the list is too narrow
BUG	[9866033] Preset global search filters not always working on static sites
Enhancement	[9865976] Coffeemaker and Advanced Workflow no longer require a special license
Enhancement	[9866149] Share button added to the menu on a drilled-down diagram
BUG	[9865910] [Evolve Site] - Fixed an issue where an object could be deleted via the icon bin (Delete button), but would then reappear after reloading the page

Product Licensing

As of the 2023.1.0 release of erwin Evolve Suite / Web Platform, licensing is migrating to the standard Quest Inc. license system. During the migration, there will be a grace period, whereby existing customers can continue to use their existing Casewise licenses. Quest do not intend to force customers onto the new licensing and will work with them to ensure a successful migration.



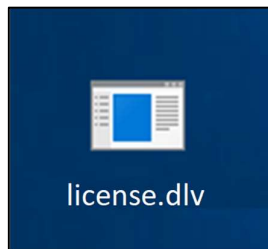
If you are considering upgrading to 2023, you should not be concerned with the new licensing system, as its usage is optional now.

Activating your Quest License

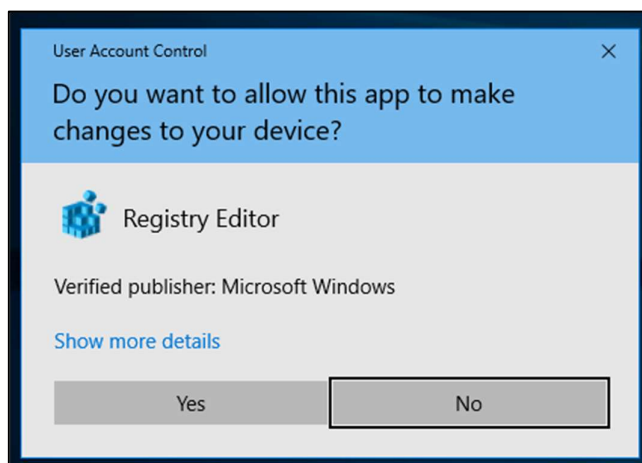
The process for activating an erwin Evolve license is:

1. Support will provide you with one or more license files per Server machine that requires licensing.

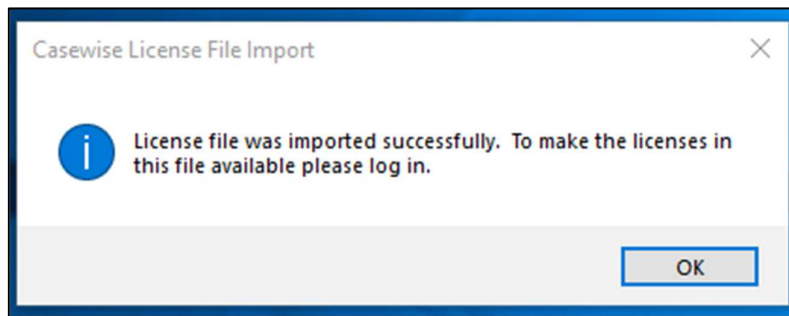
For example:



2. Having installed the software, copy this file to your server's desktop.
3. Double-click on the file. You will be presented with a warning:

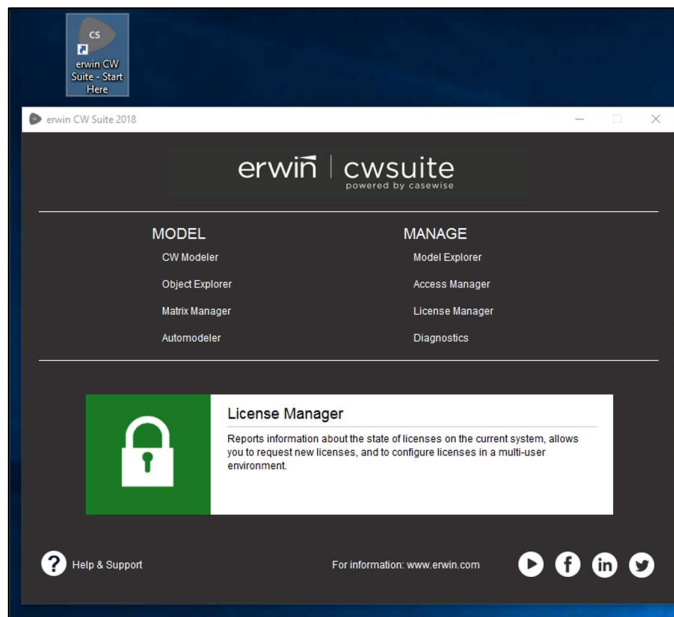


4. Click **Yes** to allow the tool to change the registry.



- The software now has the purchased licenses activated on the server. To verify this, load the License Manager.

Open erwin Evolve suite - Start Here.



- Click **License Manager**, and login.
- License Manager will show the license code, and various other attributes.

License Manager					
File Records Licenses Help					
License Name	Product	Version	Type	License ID	Expiry Date
Multi-User database	erwin Evolve Suite	CM2009.1	Client	C1rm4qsmqdg22rm4qsm3rm4qsm4rade2	Does not expire
erwin Evolve Suite	erwin Evolve Suite	CM2009.1	Client	C1rm4qsmqdg22rm4qsm3rm4qsm4rade2	Does not expire
Evolve Web Platform Server	erwin Evolve Web Platform	CM2009.1	Client	C1rm4qsmqdg22rm4qsm3rm4qsm4rade2	Does not expire
Evolve Web Platform Contributors (1)	erwin Evolve Web Platform	CM2009.1	Client	C1rm4qsmqdg22rm4qsm3rm4qsm4rade2	Does not expire
Evolve Web Platform Contributors (1)	erwin Evolve Web Platform	CM2009.1	Client	C1rm4qsmqdg22rm4qsm3rm4qsm4rade2	Does not expire
Evolve Web Platform Offline Generation	erwin Evolve Web Platform	CM2009.1	Client	C1rm4qsmqdg22rm4qsm3rm4qsm4rade2	Does not expire
Evolve Web Platform	erwin Evolve Web Platform	CM2009.1	Client	C1rm4qsmqdg22rm4qsm3rm4qsm4rade2	Does not expire
Auto Diagram Designer	erwin Evolve Web Platform	CM2009.1	Client	C1rm4qsmqdg22rm4qsm3rm4qsm4rade2	Does not expire
Evolve Web Platform Social Follower (Unlimited Users)	erwin Evolve Web Platform	CM2009.1	Client	C1rm4qsmqdg22rm4qsm3rm4qsm4rade2	Does not expire

Returning your erwin License

If you need to move the license from one server to another, you must contact support, who will assist with the migration.

About Us

Quest creates software solutions that make the benefits of modern technology real in an increasingly complex IT landscape. From database and systems management to Active Directory and Office 365 management, and cyber security resilience, Quest helps customers solve their next IT challenge now. Around the globe, more than 130,000 companies and 95% of the Fortune 500 count on Quest to deliver proactive management and monitoring for the next enterprise initiative, find the next solution for complex Microsoft challenges and stay ahead of the next threat. Quest Software. Where next meets now. For more information, visit www.quest.com.

Technical support resources

Technical support is available to Quest customers with a valid maintenance contract and customers who have trial versions. You can access the Quest Support Portal at <https://support.quest.com>.

The Support Portal provides self-help tools you can use to solve problems quickly and independently, 24 hours a day, 365 days (about 12 months) a year. The Support Portal enables you to:

- Submit and manage a Service Request
- View Knowledge Base articles
- Sign up for product notifications
- Download software and technical documentation
- View how-to-videos
- Engage in community discussions
- Chat with support engineers online
- View services to help you with your product.