

KACE® Desktop Authority 11.1

Data Diagram



© 2019 Quest Software Inc.

ALL RIGHTS RESERVED.

This guide contains proprietary information protected by copyright. The software described in this guide is furnished under a software license or nondisclosure agreement. This software may be used or copied only in accordance with the terms of the applicable agreement. No part of this guide may be reproduced or transmitted in any form or by any means, electronic or mechanical, including photocopying and recording for any purpose other than the purchaser's personal use without the written permission of Quest Software Inc.

The information in this document is provided in connection with Quest Software products. No license, express or implied, by estoppel or otherwise, to any intellectual property right is granted by this document or in connection with the sale of Quest Software products. EXCEPT AS SET FORTH IN THE TERMS AND CONDITIONS AS SPECIFIED IN THE LICENSE AGREEMENT FOR THIS PRODUCT, QUEST SOFTWARE ASSUMES NO LIABILITY WHATSOEVER AND DISCLAIMS ANY EXPRESS, IMPLIED OR STATUTORY WARRANTY RELATING TO ITS PRODUCTS INCLUDING, BUT NOT LIMITED TO, THE IMPLIED WARRANTY OF MERCHANTABILITY, FITNESS FOR A PARTICULAR PURPOSE, OR NON-INFRINGEMENT. IN NO EVENT SHALL QUEST SOFTWARE BE LIABLE FOR ANY DIRECT, INDIRECT, CONSEQUENTIAL, PUNITIVE, SPECIAL OR INCIDENTAL DAMAGES (INCLUDING, WITHOUT LIMITATION, DAMAGES FOR LOSS OF PROFITS, BUSINESS INTERRUPTION OR LOSS OF INFORMATION) ARISING OUT OF THE USE OR INABILITY TO USE THIS DOCUMENT, EVEN IF QUEST SOFTWARE HAS BEEN ADVISED OF THE POSSIBILITY OF SUCH DAMAGES. Quest Software makes no representations or warranties with respect to the accuracy or completeness of the contents of this document and reserves the right to make changes to specifications and product descriptions at any time without notice. Quest Software does not make any commitment to update the information contained in this document.

If you have any questions regarding your potential use of this material, contact:

Quest Software Inc.

Attn: LEGAL Dept

4 Polaris Way

Aliso Viejo, CA 92656

Refer to our Web site (<https://www.quest.com>) for regional and international office information.

Patents

Quest Software is proud of our advanced technology. Patents and pending patents may apply to this product. For the most current information about applicable patents for this product, please visit our website at <https://www.quest.com/legal>.

Trademarks

Quest, the Quest logo, and Join the Innovation are trademarks and registered trademarks of Quest Software Inc. For a complete list of Quest marks, visit <https://www.quest.com/legal/trademark-information.aspx>. All other trademarks and registered trademarks are property of their respective owners.

Legend

 **CAUTION:** A CAUTION icon indicates potential damage to hardware or loss of data if instructions are not followed.

 **IMPORTANT, NOTE, TIP, MOBILE, or VIDEO:** An information icon indicates supporting information.

Desktop Authority – Data Diagram
Updated – November 1, 2019
Version – 11.1

Contents

Database Schema.....	4
User Management Profile Data	5
Computer Management Profile Data	6
Hardware/Software Inventory Data.....	7
User/Computer Activity Data	8
About us	9

Database Schema

For readability and ease of use, the DA Reporting Database Schema shown on the following pages is broken up into logical groupings, User Management Profile Data, Computer Management Profile Data, Hardware/Software Inventory, User/Computer Activity Data, Anti-malware and Anti-spyware.

The grouping of tables that make up the **User Management Profile Data** consists of all profile and configuration element data for User Management profile objects configured in the Manager.

The grouping of tables that make up the Computer Management Profile Data consists of all profile and configuration element data for Computer Management profile objects configured in the Manager.

The **Hardware/Software Inventory** grouping consists of data that is collected from and about hardware and software clients that log on to the network.

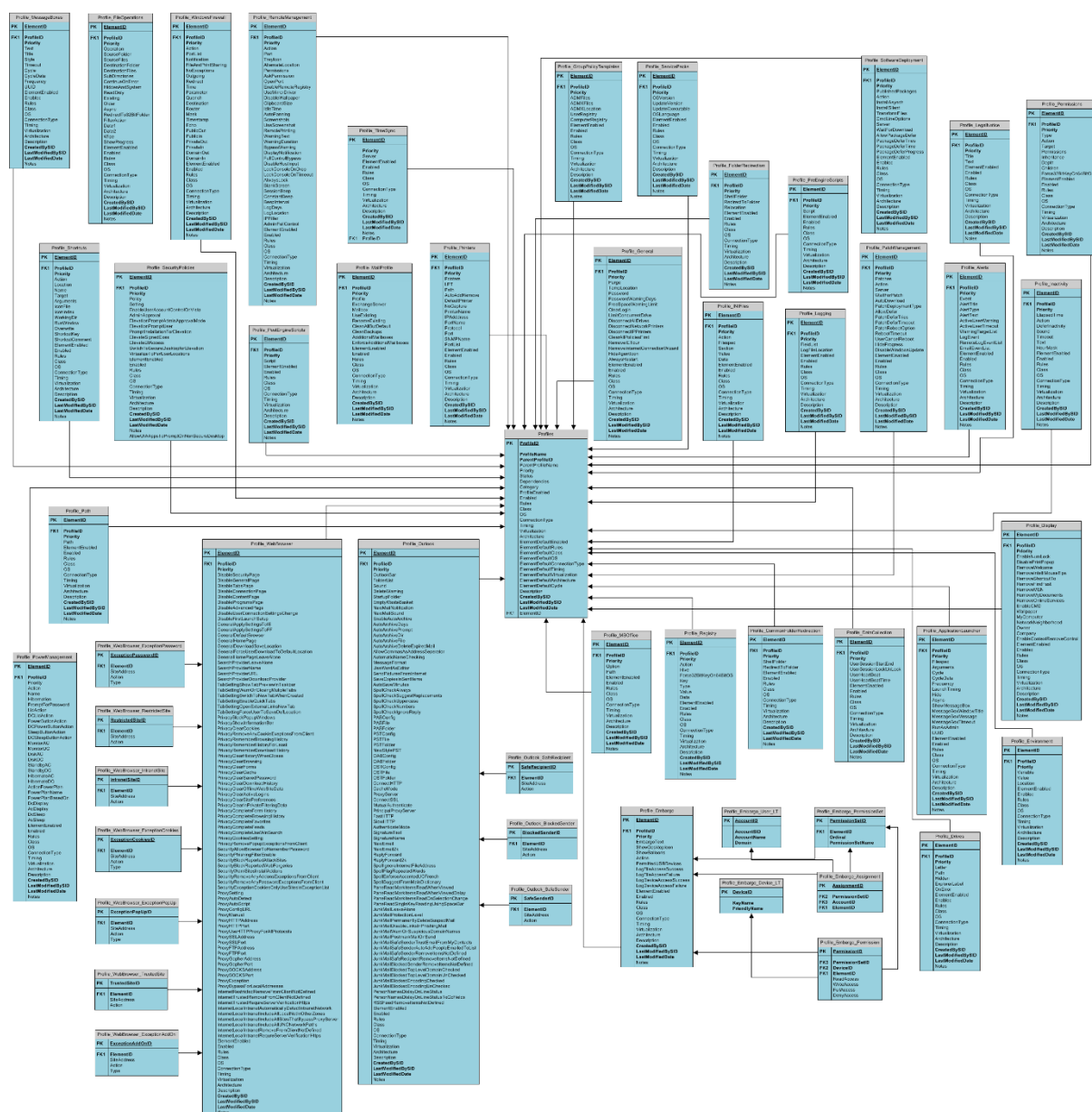
The grouping of tables that make up the **User/Computer Activity Data** consists of data collected as users/computers log on and off the network. This set makes up the data needed for User Activity reporting.

The Profile data is periodically updated from the DACONFIGURATION database to the DAREPORTING database. The period in which the database is updated is configured in the ETLProcessor plugin. This is found on the OpsMaster Service tab of Server Manager.

When viewing the following diagrams, zoom in for a more precise view. A full printable version of the diagrams can be downloaded from the Quest web site.

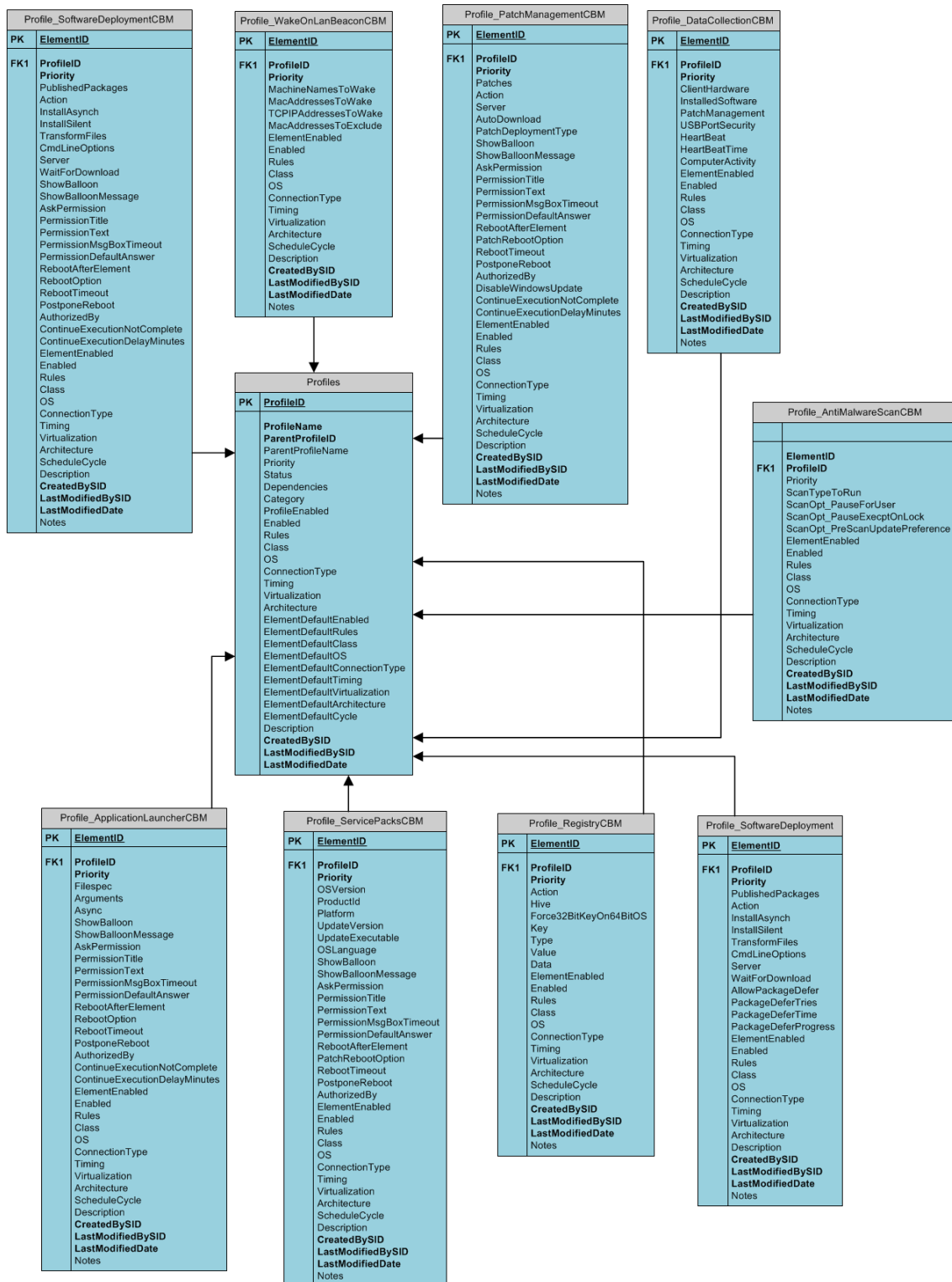
- [User Management Profile Data](#)
- [Computer Management Profile Data](#)
- [Hardware/Software Inventory Data](#)
- [User/Computer Activity Data](#)

User Management Profile Data



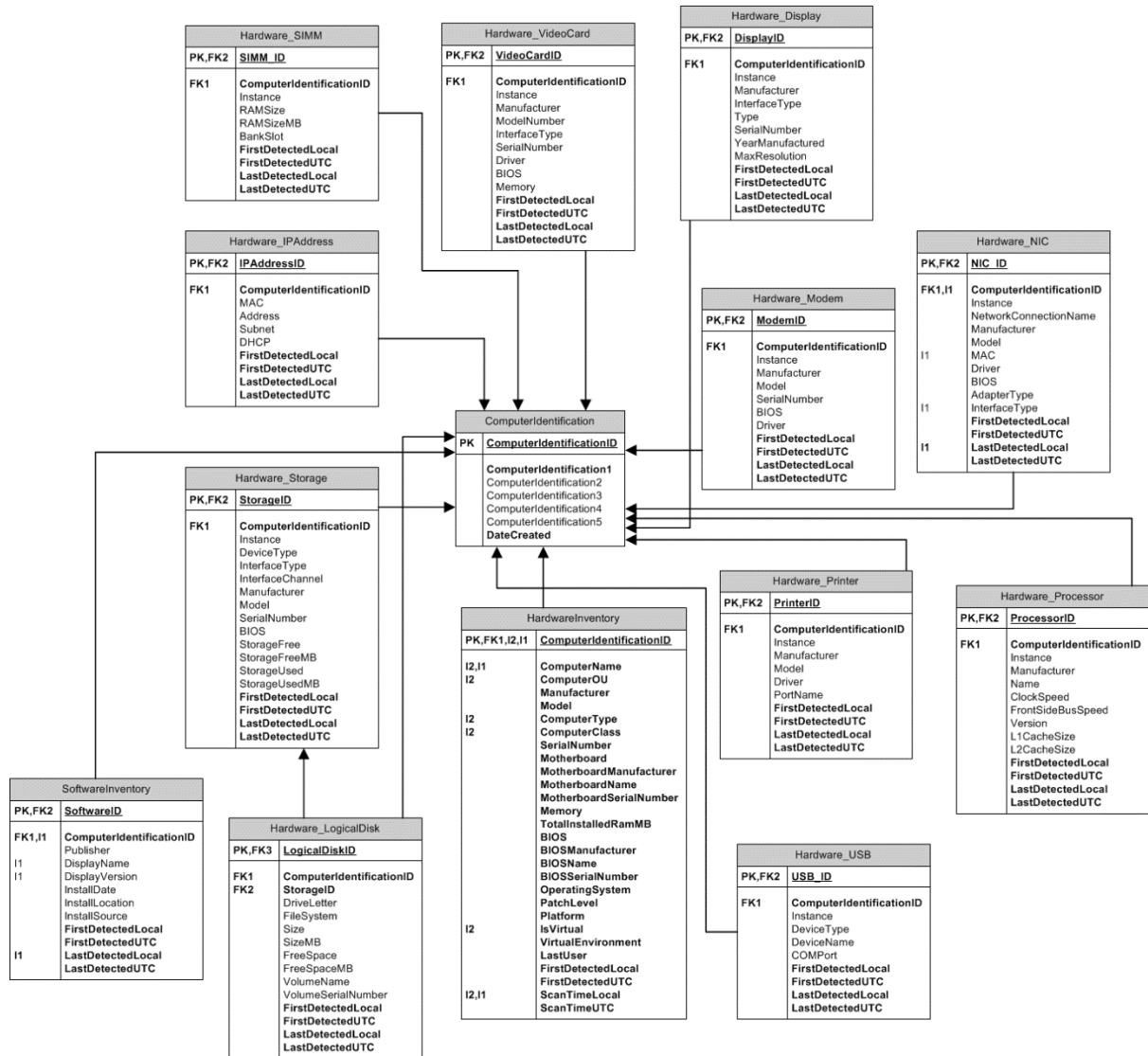
i NOTE: When viewing this diagram, zoom in for a more precise view. A full printable version of this diagram can be downloaded from the Quest web site.

Computer Management Profile Data



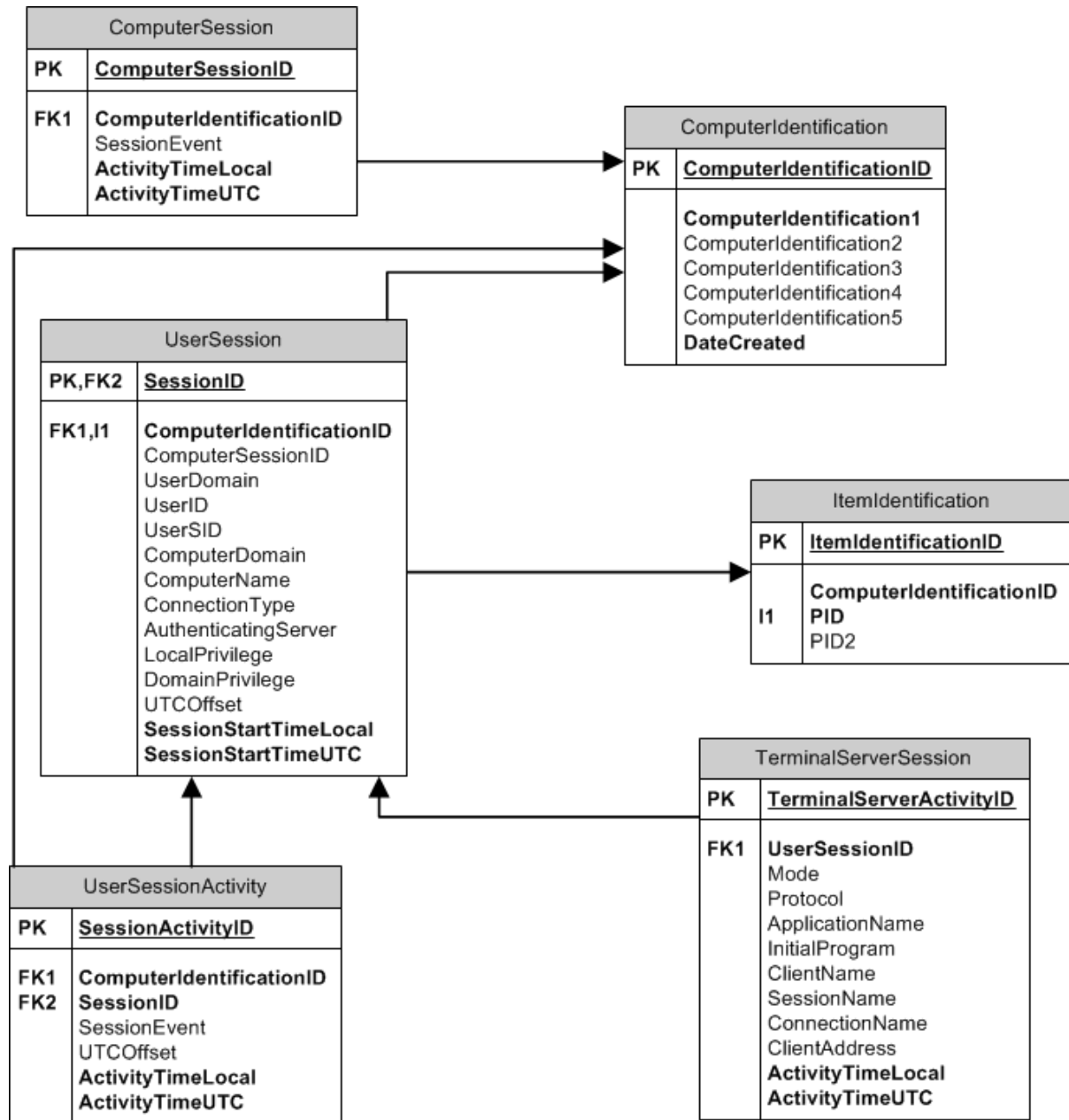
NOTE: When viewing this diagram, zoom in for a more precise view. A full printable version of this diagram can be downloaded from the Quest web site.

Hardware/Software Inventory Data



NOTE: When viewing this diagram, zoom in for a more precise view. A full printable version of this diagram can be downloaded from the Quest web site.

User/Computer Activity Data



i **NOTE:** When viewing this diagram, zoom in for a more precise view. A full printable version of this diagram can be downloaded from the Quest web site.

Quest provides software solutions for the rapidly-changing world of enterprise IT. We help simplify the challenges caused by data explosion, cloud expansion, hybrid datacenters, security threats, and regulatory requirements. We are a global provider to 130,000 companies across 100 countries, including 95% of the Fortune 500 and 90% of the Global 1000. Since 1987, we have built a portfolio of solutions that now includes database management, data protection, identity and access management, Microsoft platform management, and unified endpoint management. With Quest, organizations spend less time on IT administration and more time on business innovation. For more information, visit www.quest.com.

Technical support resources

Technical support is available to Quest customers with a valid maintenance contract and customers who have trial versions. You can access the Quest Support Portal at <https://support.quest.com>.

The Support Portal provides self-help tools you can use to solve problems quickly and independently, 24 hours a day, 365 days a year. The Support Portal enables you to:

- Submit and manage a Service Request
- View Knowledge Base articles
- Sign up for product notifications
- Download software and technical documentation
- View how-to-videos
- Engage in community discussions
- Chat with support engineers online
- View services to assist you with your product.